

# Mt Gibson Gold Project

## Proposal Content Document

**Table 1: General proposal content description**

<b>Proposal Title</b>	Mt Gibson Gold Project
<b>Proponent Name</b>	Crimson Metals Pty Ltd
<b>Short Description</b>	<p>The Proposal is to develop, construct and operate an Open Pit Gold Mine, including Process Plant and supporting infrastructure; located approximately 280 km northeast of Perth and less than 10 km east of the Great Northern Highway, in the Avon Wheatbelt region of Western Australia (Figure 1).</p> <p>The Proposal includes:</p> <ul style="list-style-type: none"><li>• the development of above and below water table Open Pits, via cutbacks of historically mined open pits.</li><li>• ore processing facilities</li><li>• mineral waste management (Waste Rock Landform and Tailings Storage Facility)</li><li>• associated infrastructure (Haul Roads, borefields, pipeline corridors, workshops, offices etc.), utilising existing infrastructure where possible</li><li>• expansion of the existing airstrip (approved by EPAS under s43a of the EP Act on 26 June 2025).</li></ul> <p>The Proposal is expected to process up to six (6) million tonnes per annum (Mtpa) of ore and extract approximately 488 million tonnes (Mt) of waste over an estimated 15-year operating mine life.</p> <p>Mining will occur concurrently across ore bodies as well as several open pits. Rehabilitation and closure will be progressive and in accordance with the approved Mine Closure Plan.</p> <p>The Proposal is located within a 3,820 hectares (ha) Development Envelope and will require native vegetation clearing up to 1,213 ha.</p>

**Table 2: Proposal content elements**

Proposal element	Location/ Description	Maximum extent, capacity or range (as referred)	Maximum extent, capacity or range (proposed change)
<b>Physical elements</b>			
Mine elements including: <ul style="list-style-type: none"> <li>• Open Pits</li> <li>• Waste Rock Landforms</li> <li>• Stockpiles</li> <li>• Haul and Access Roads</li> </ul>	Figure 2	Up to 1,612 ha Disturbance Footprint, including clearing of up to 1,213 ha of native vegetation, 399 ha existing disturbance (11 Open Pits, 6 Waste Rock Landforms, 1 Heap Leach Landform, Airstrip and Access Roads) occurs within the Disturbance Footprint and bounded by a 3,820 ha Development Envelope.	
Processing elements including: <ul style="list-style-type: none"> <li>• Crushing and Processing Plant</li> <li>• Heap Leach Facilities</li> <li>• Tailings Storage Facility</li> <li>• Doré bar storage</li> </ul>			
Supporting infrastructure elements including: <ul style="list-style-type: none"> <li>• Power station and power lines</li> <li>• New and existing borefields, water pipelines and water management infrastructure</li> <li>• Ancillary buildings and laydown yards</li> <li>• Airstrip</li> </ul>			
<b>Construction elements</b>			
Construction elements include clearing for all identified physical and operational elements and installation of processing and supporting elements	Figure 2	Clearing of areas associated with construction elements is included within the proposed Disturbance Footprint of 1,612 ha.	
<b>Operational elements</b>			
Mining	Figure 2	Up to 41 million tonnes per annum (Mtpa).	
Processing		Processing of up to six (6) Mtpa of ore to produce a total of 2.6 million ounces of Gold over the life of mine.	
Waste Rock Landform (WRL)		Up to 35 Mtpa of waste rock. 488 Mt waste rock capacity	

TSF (integrated with the WRL)		Up to 6 Mtpa of Tailings 90 Mt tailings capacity	
Power generation		The Processing Plant and associated infrastructure will be powered by an 18 Megawatt (MW) onsite natural gas power station.	
Groundwater abstraction for water supply and mine dewatering	Fractured and Weathered Bedrock Aquifer	Abstraction of up to 3.3 gegalitres per annum (GL/a).	Abstraction of up to 5 gegalitres per annum (GL/a).
<b>Proposal elements with greenhouse gas emissions</b>			
<b>Construction elements</b>			
<b>Scope 1</b>	GHG emissions of 105,496 tCO <sub>2</sub> -e in Year 1.		
<b>Scope 2</b>	GHG emissions of 893 tCO <sub>2</sub> -e in Year 1.		
<b>Scope 3</b>	GHG emissions of 50,073 tCO <sub>2</sub> -e in Year 1.		
<b>Operation elements</b>			
<b>Scope 1</b>	Annual average LOM emissions of 108,979 tCO <sub>2</sub> -e. Peak emission of 131,032 tCO <sub>2</sub> -e per annum in Year 2. Annual average operational throughput GHG emissions of 93,454 tCO <sub>2</sub> -e/year (excl. land clearing)		
<b>Scope 2</b>	Annual average LOM emission of 478 tCO <sub>2</sub> -e per annum. Peak emission of 893 tCO <sub>2</sub> -e per annum in Year 1.		
<b>Scope 3</b>	Annual average LOM emission of 66,286 tCO <sub>2</sub> -e per annum.		
<b>Total (tCO<sub>2</sub>-e/ha) based on annual average Scope 1 and Scope 2</b>	1,481,442 tCO <sub>2</sub> -e.		
<b>Rehabilitation</b>			
<p>Topsoil will be collected and stored in windrows and designated stockpiles for use in rehabilitation. Progressive rehabilitation will be undertaken over the life of the mine as areas become available.</p> <p>Areas disturbed through implementation of this Proposal will be designed to be safe and non-polluting and will be constructed so that their final shape, size, stability, and ability to support local native vegetation are comparable to natural landforms in the area.</p>			
<b>Commissioning</b>			
Commissioning of the processing facility subject to operational limits above.			
<b>Decommissioning</b>			
All infrastructure will be removed unless ownership is transferred to a third party. The Mine Closure Plan (MCP) submitted per requirements of the <i>Mining Act</i> , regulated by DEMIRS, will outline the decommissioning plan and post-closure land use.			

Other elements which affect extent of effects on the environment		
<b>Proposal time</b>	Maximum project life	19 years
	Construction phase	18 months
	Operations phase	15 years
	Decommissioning phase	Completed within 2 years of cessation of operations.

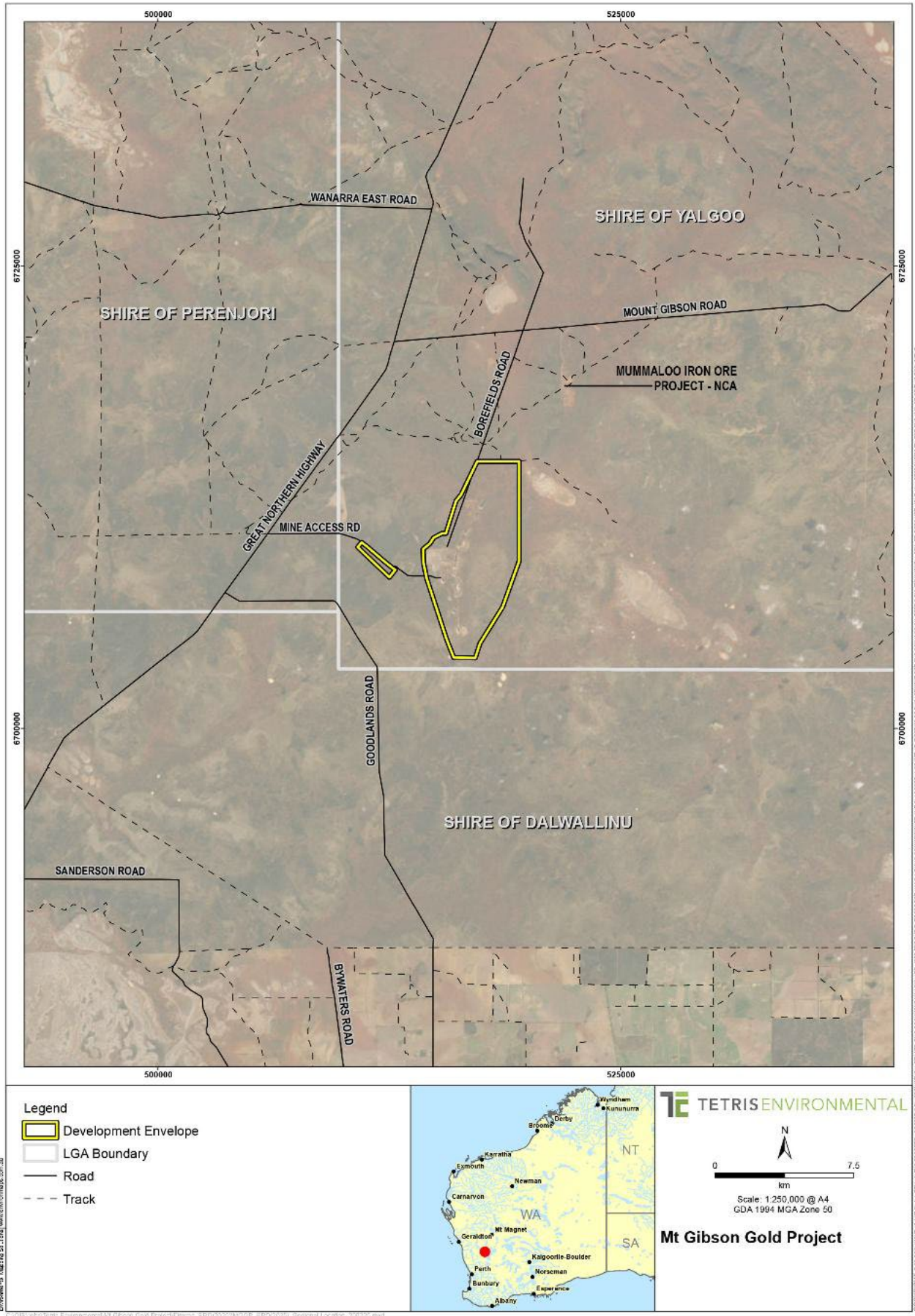
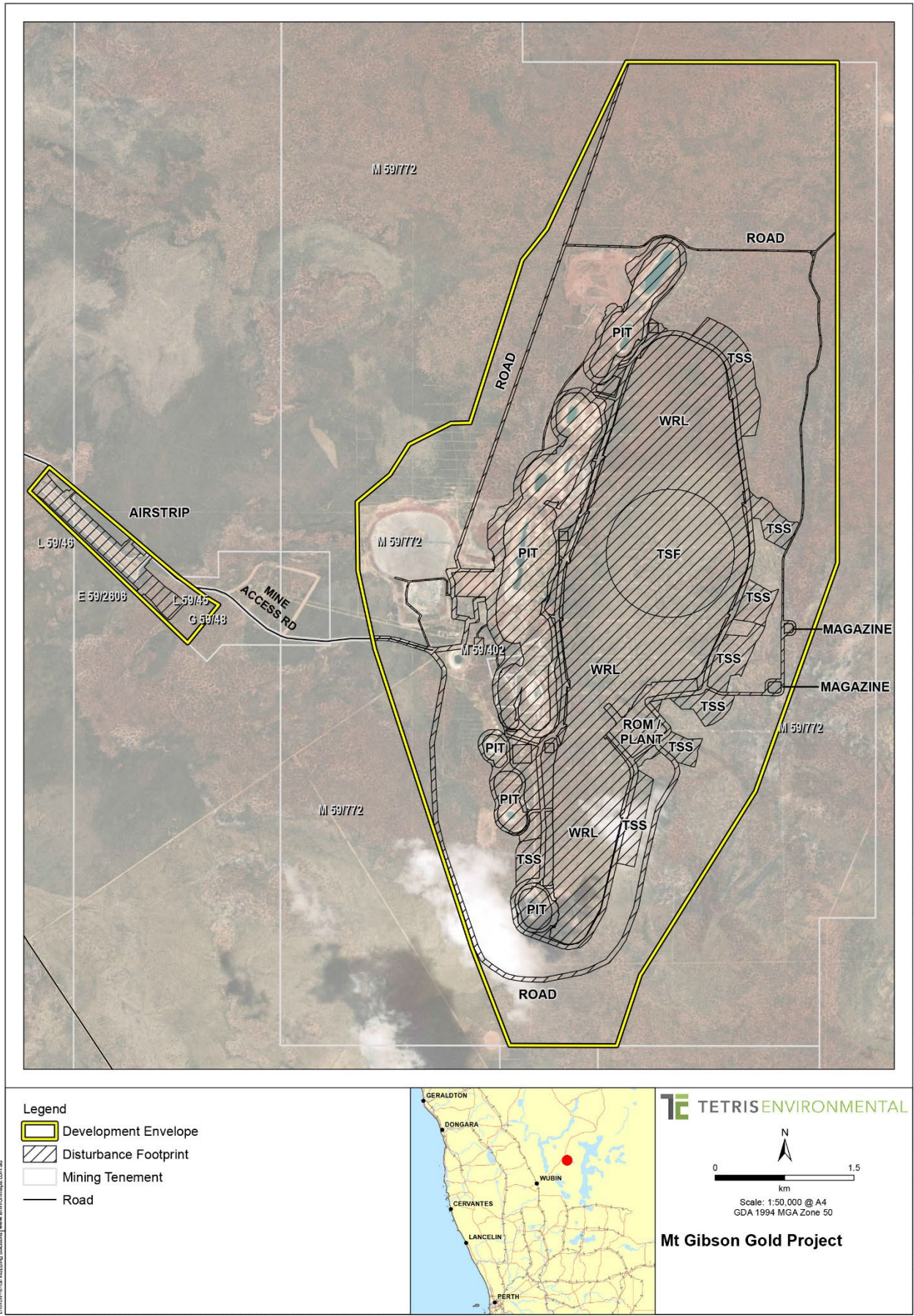


Figure 1: Regional location and development envelope



- Legend**
- Development Envelope
  - Disturbance Footprint
  - Mining Tenement
  - Road



**TE TETRIS ENVIRONMENTAL**

0 1.5  
km  
Scale: 1:50,000 @ A4  
GDA 1994 MGA Zone 50

**Mt Gibson Gold Project**

ENVIRONMAPS | 08 9498 8800 | www.environmentalmaps.com.au

COPYRIGHT: THIS DOCUMENT IS AND SHALL REMAIN THE PROPERTY OF TETRIS ENVIRONMENTAL PTY LTD. THIS DOCUMENT MAY ONLY BE USED FOR THE PURPOSES FOR WHICH IT WAS COMMISSIONED AND IN ACCORDANCE WITH THE TERMS OF ENGAGEMENT FOR THE COMMISSION. TETRIS ENVIRONMENTAL PTY LTD DOES NOT HOLD ANY RESPONSIBILITY FOR THE ABUSE OF THIS DOCUMENT.

**Figure 2: Indicative Proposal layout**