

LEGEND

- Development Envelope
- Ministerial Statement 756
- Highway
- Conceptual Mining Layout
- Mining Exclusion Zone
- Additional mining/cut widening



SCALE

0.5 0 0.5 1km

1:40 000 @ A4

Disclaimer

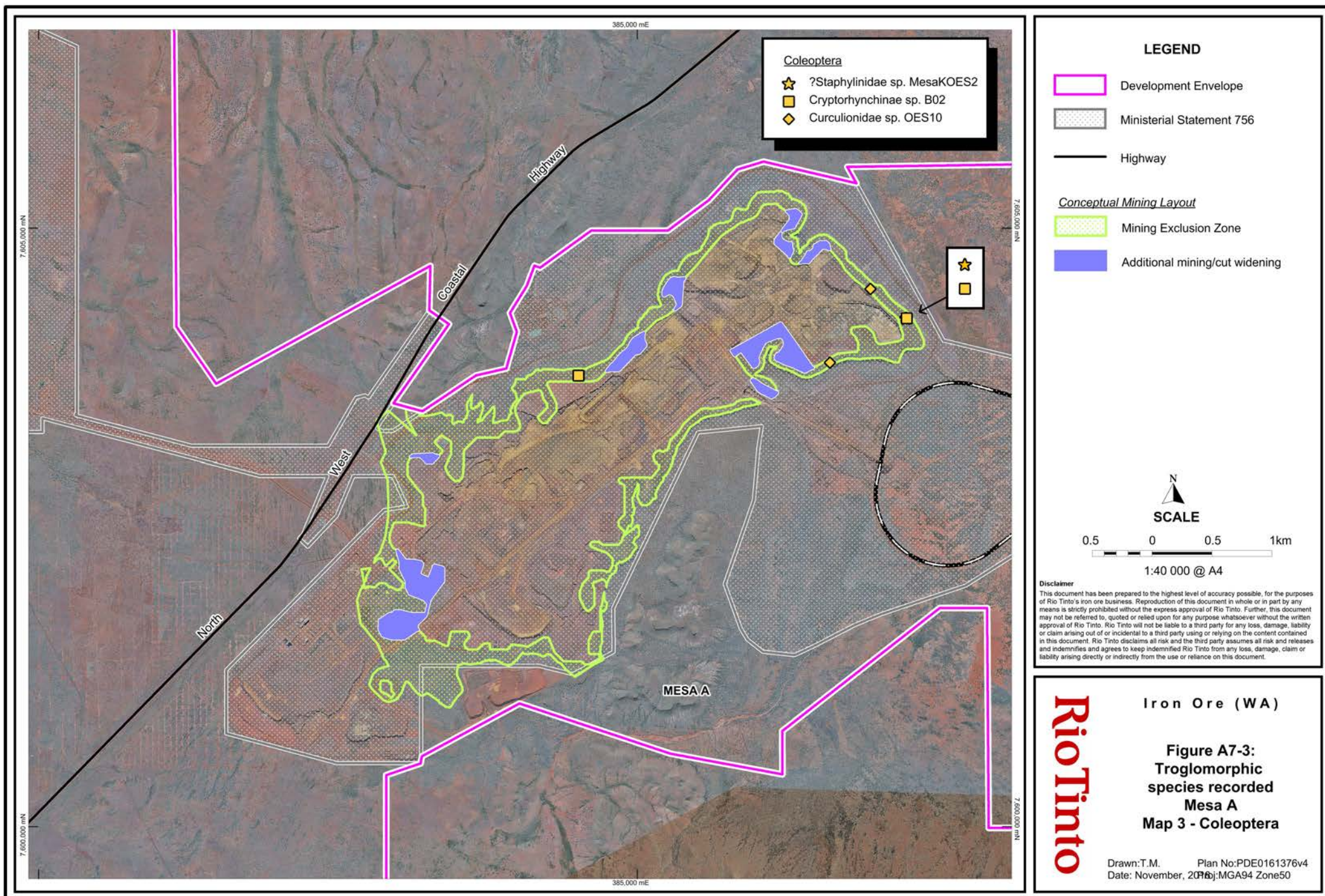
This document has been prepared to the highest level of accuracy possible, for the purposes of Rio Tinto's iron ore business. Reproduction of this document in whole or in part by any means is strictly prohibited without the express approval of Rio Tinto. Further, this document may not be referred to, quoted or relied upon for any purpose whatsoever without the written approval of Rio Tinto. Rio Tinto will not be liable to a third party for any loss, damage, liability or claim arising out of or incidental to a third party using or relying on the content contained in this document. Rio Tinto disclaims all risk and the third party assumes all risk and releases and indemnifies and agrees to keep indemnified Rio Tinto from any loss, damage, claim or liability arising directly or indirectly from the use or reliance on this document.

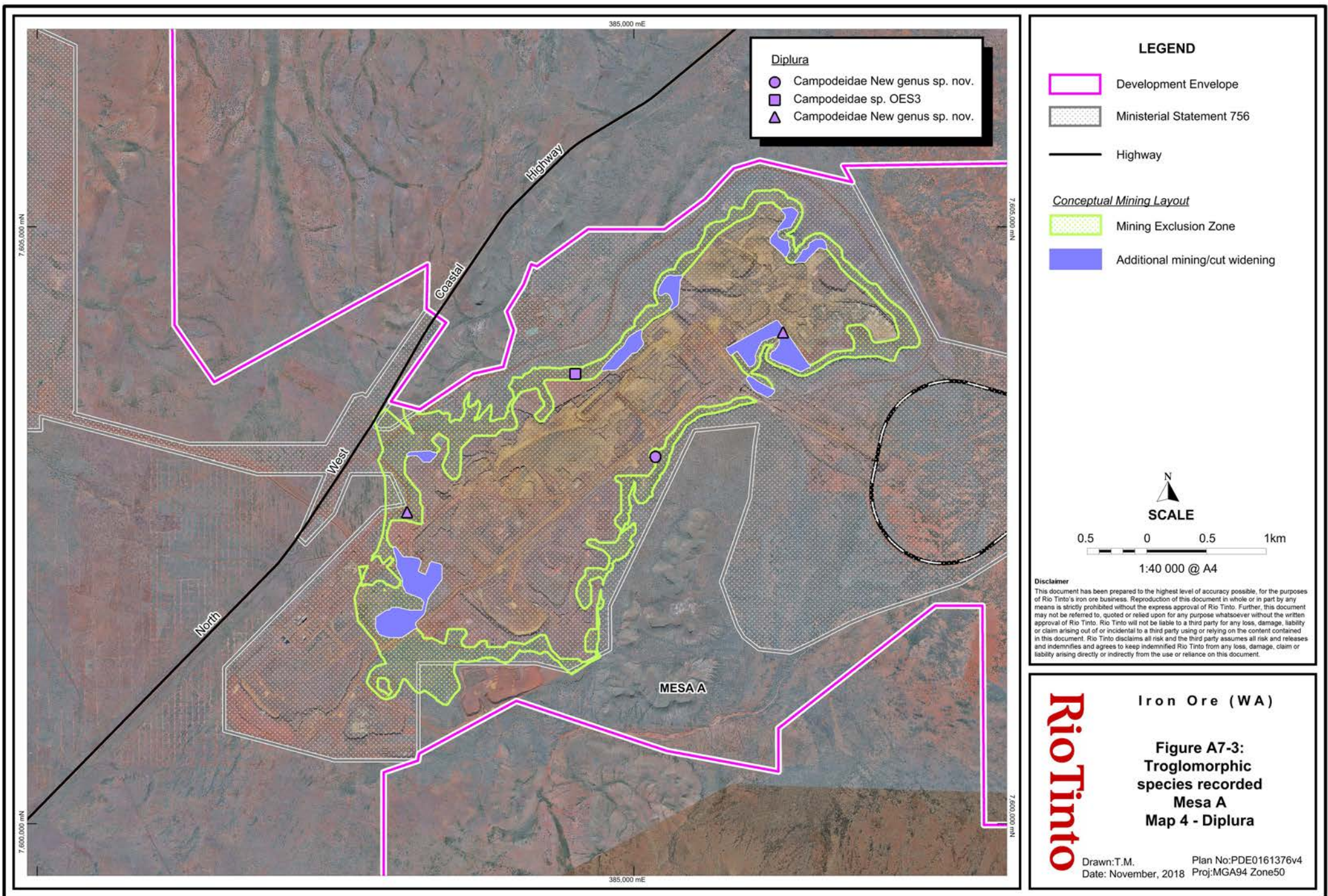
Rio Tinto

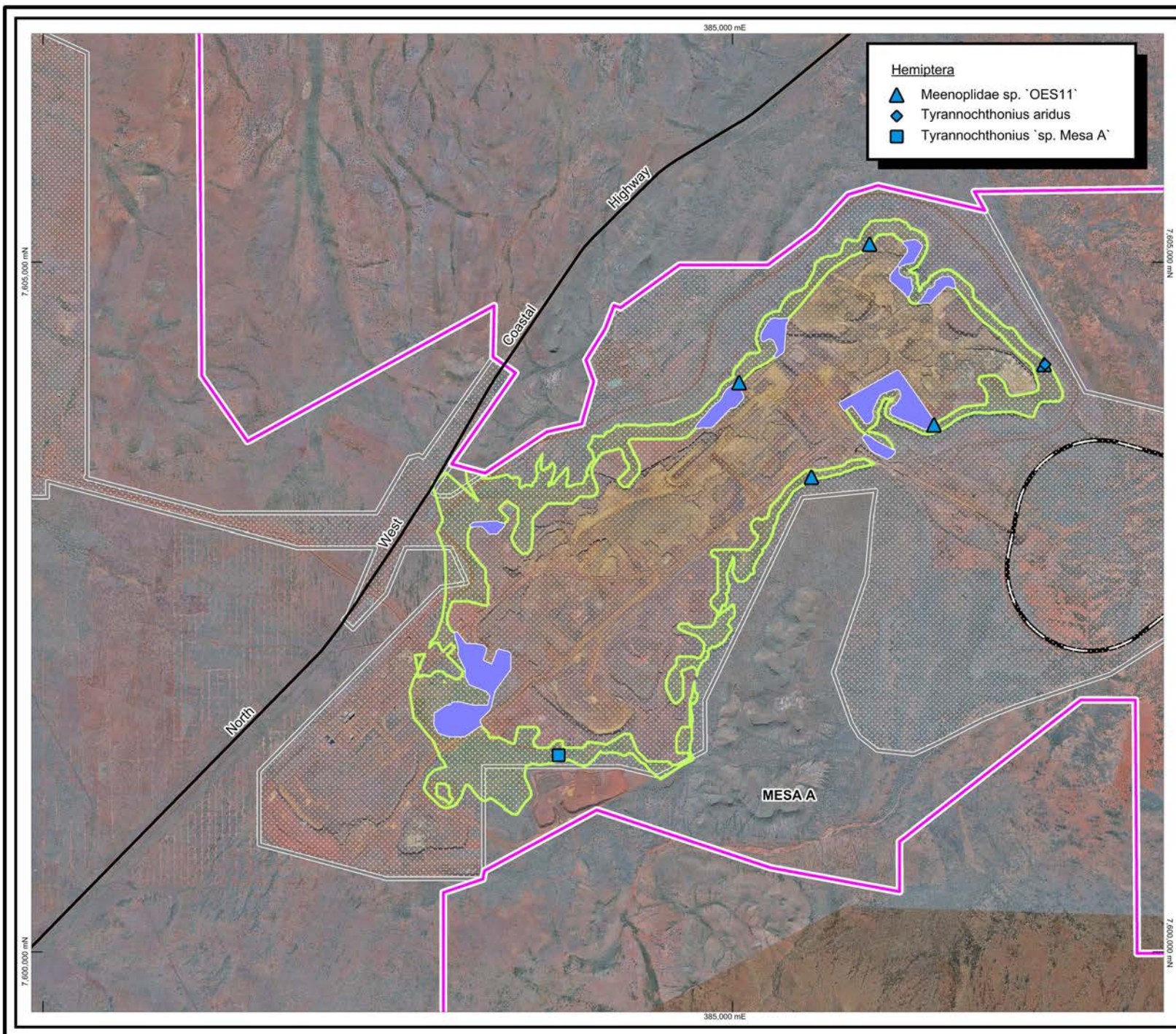
Iron Ore (WA)

**Figure A7-3:
Troglomorphic
species recorded
Mesa A
Map 2 - Blattodea**

Drawn: T.M. Plan No: PDE0161376v4
Date: November, 2018 Proj: MGA94 Zone50







LEGEND

- Development Envelope
- Ministerial Statement 756
- Highway
- Conceptual Mining Layout**
- Mining Exclusion Zone
- Additional mining/cut widening



SCALE

0.5 0 0.5 1km

1:40 000 @ A4

Disclaimer

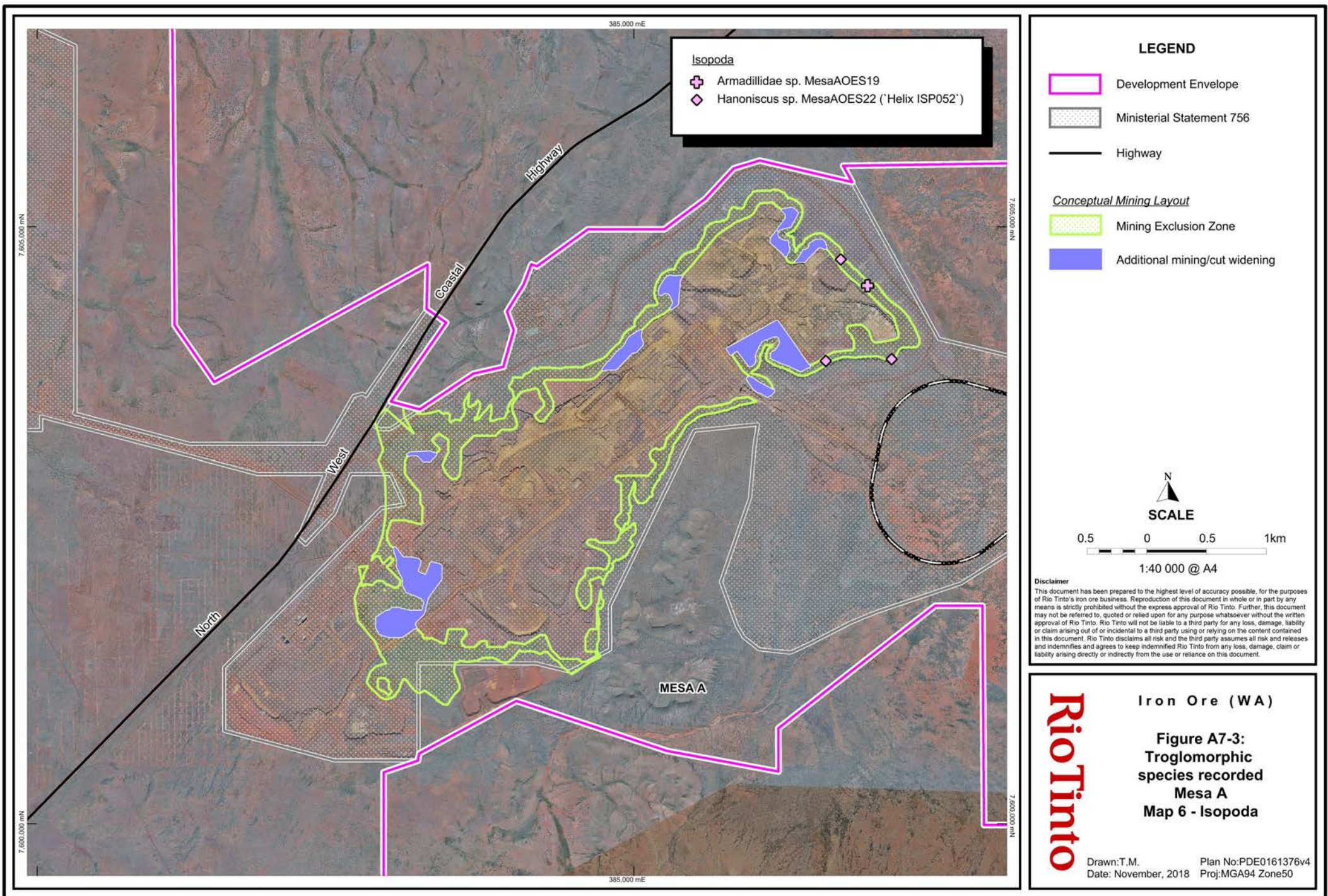
This document has been prepared to the highest level of accuracy possible, for the purposes of Rio Tinto's iron ore business. Reproduction of this document in whole or in part by any means is strictly prohibited without the express approval of Rio Tinto. Further, this document may not be referred to, quoted or relied upon for any purpose whatsoever without the written approval of Rio Tinto. Rio Tinto will not be liable to a third party for any loss, damage, liability or claim arising out of or incidental to a third party using or relying on the content contained in this document. Rio Tinto disclaims all risk and the third party assumes all risk and releases and indemnifies and agrees to keep indemnified Rio Tinto from any loss, damage, claim or liability arising directly or indirectly from the use or reliance on this document.

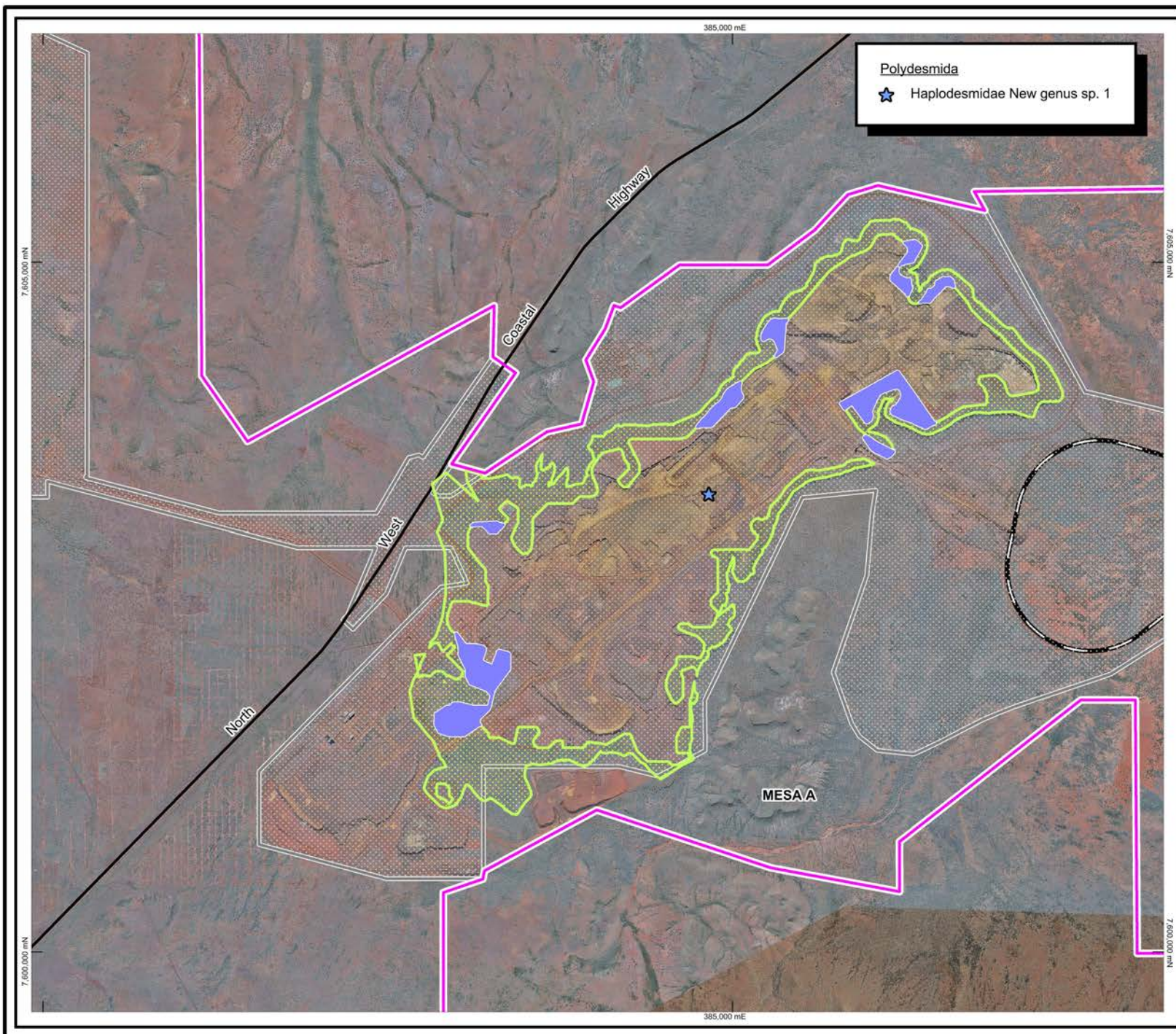
Rio Tinto

Iron Ore (WA)

**Figure A7-3:
Troglomorphic
species recorded
Mesa A
Map 5 - Hemiptera**

Drawn: T.M. Plan No: PDE0161376v4
Date: November, 2018 Proj: MGA94 Zone50





LEGEND

Development Envelope

Ministerial Statement 756

Highway

Conceptual Mining Layout

Mining Exclusion Zone

Additional mining/cut widening

SCALE

0.5 0 0.5 1km

1:40 000 @ A4

Disclaimer

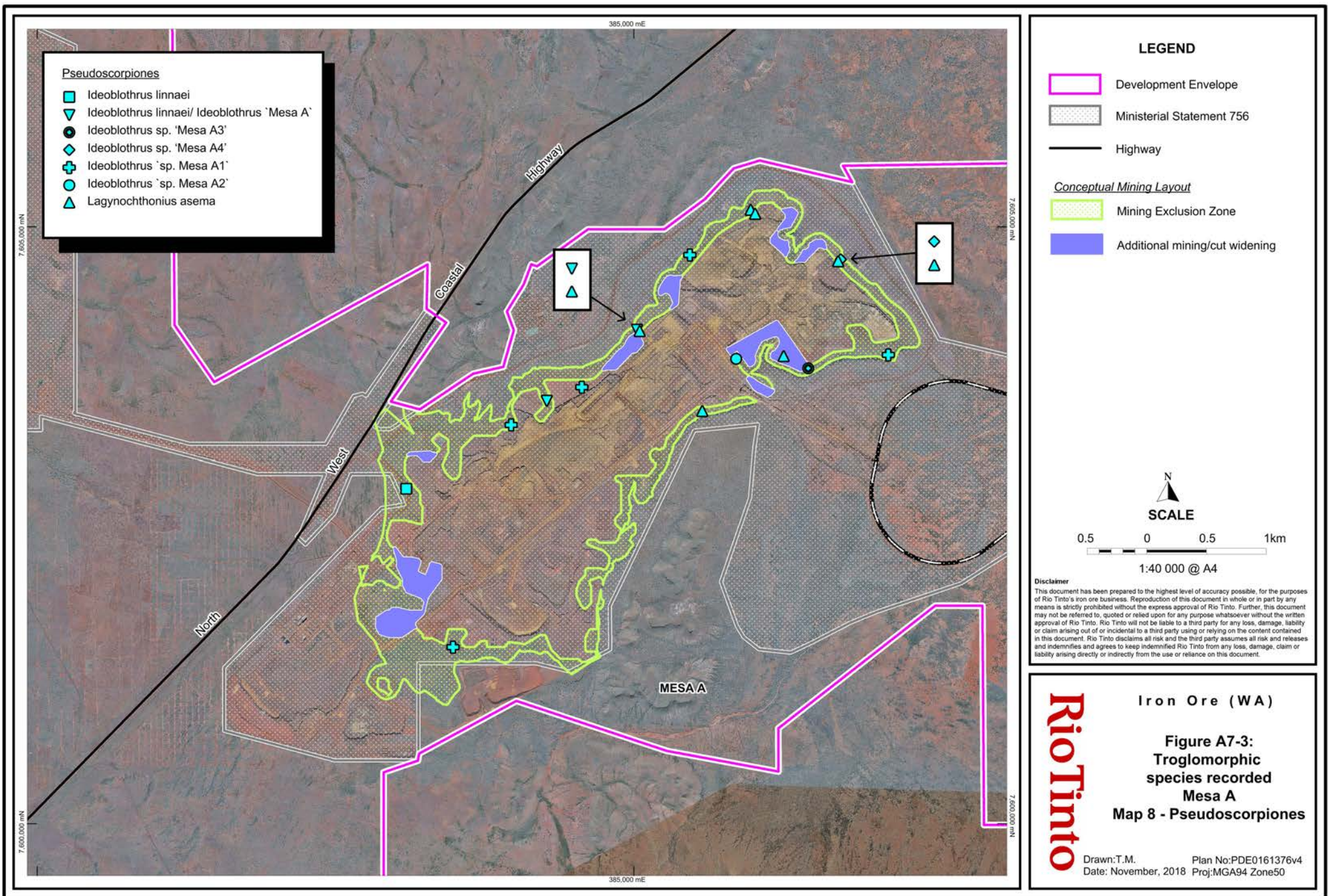
This document has been prepared to the highest level of accuracy possible, for the purposes of Rio Tinto's iron ore business. Reproduction of this document in whole or in part by any means is strictly prohibited without the express approval of Rio Tinto. Further, this document may not be referred to, quoted or relied upon for any purpose whatsoever without the written approval of Rio Tinto. Rio Tinto will not be liable to a third party for any loss, damage, liability or claim arising out of or incidental to a third party using or relying on the content contained in this document. Rio Tinto disclaims all risk and the third party assumes all risk and releases and indemnifies and agrees to keep indemnified Rio Tinto from any loss, damage, claim or liability arising directly or indirectly from the use or reliance on this document.

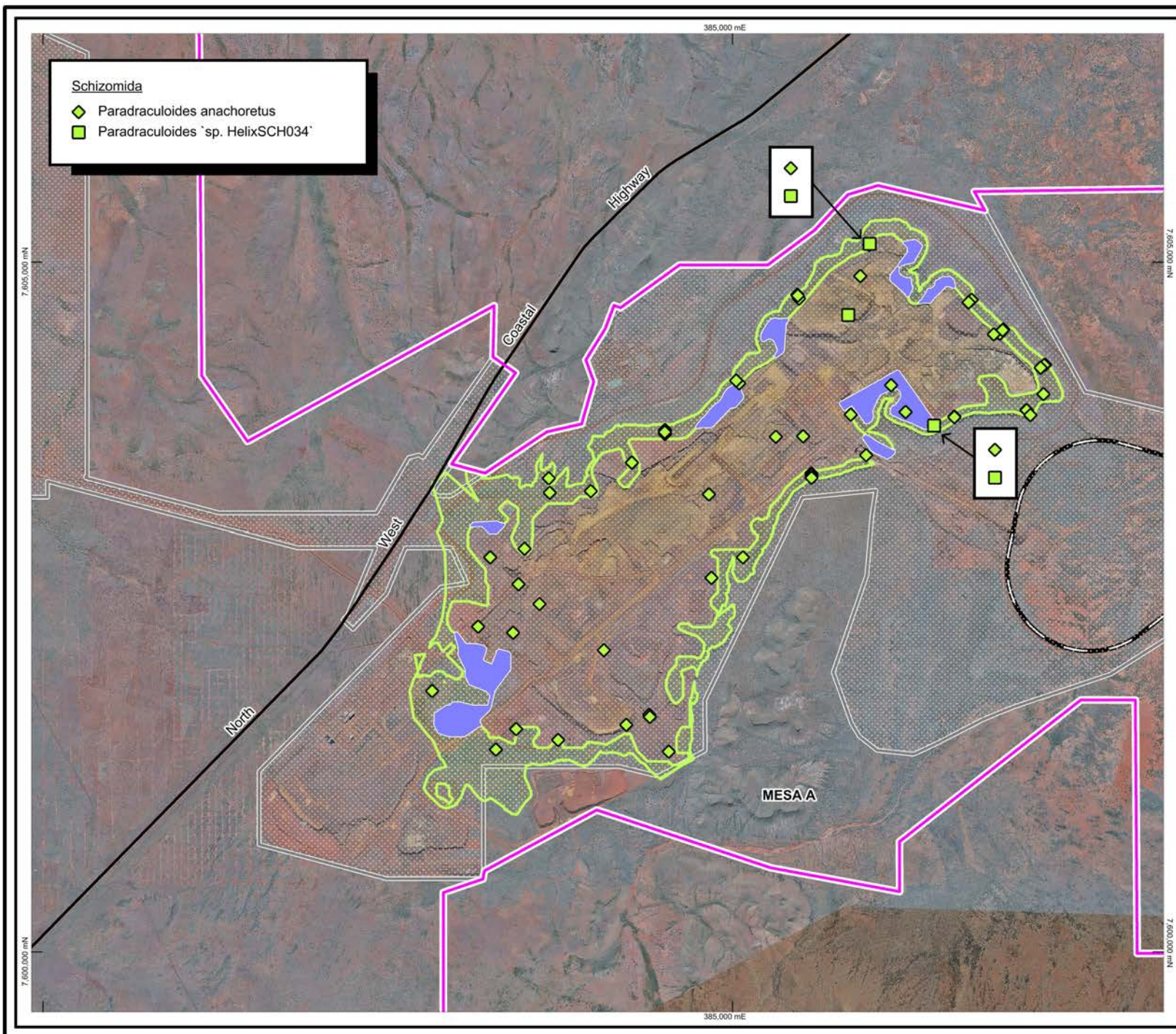
Rio Tinto

Iron Ore (WA)

Figure A7-3:
Troglomorphic
species recorded
Mesa A
Map 7 - Polydesmida

Drawn: T.M. Plan No: PDE0161376v4
 Date: November, 2018 Proj: MGA94 Zone50





LEGEND

- Development Envelope
- Ministerial Statement 756
- Highway
- Conceptual Mining Layout**
- Mining Exclusion Zone
- Additional mining/cut widening



SCALE



1:40 000 @ A4

Disclaimer

This document has been prepared to the highest level of accuracy possible, for the purposes of Rio Tinto's iron ore business. Reproduction of this document in whole or in part by any means is strictly prohibited without the express approval of Rio Tinto. Further, this document may not be referred to, quoted or relied upon for any purpose whatsoever without the written approval of Rio Tinto. Rio Tinto will not be liable to a third party for any loss, damage, liability or claim arising out of or incidental to a third party using or relying on the content contained in this document. Rio Tinto disclaims all risk and the third party assumes all risk and releases and indemnifies and agrees to keep indemnified Rio Tinto from any loss, damage, claim or liability arising directly or indirectly from the use or reliance on this document.

Rio Tinto

Iron Ore (WA)

Figure A7-3:
Troglomorphic
species recorded
Mesa A
Map 9 - Schizomida

Drawn: T.M. Plan No: PDE0161376v4
Date: November, 2018 Proj: MGA94 Zone50

