

FIGURES

- Figure 1 Aerial photograph of the project area
- Figure 2 Existing Development Plan
- Figure 3 Existing service infrastructure
- Figure 4 Proposed Development Plan
- Figure 5 Topography, Landforms and Soils
- Figure 6 Proportion of visitors to Monkey Mia for each month for 1998-2003
- Figure 7 The average number of tourists visiting Monkey Mia each month for 1998-2003 and the predicted increase as a result of the expansion
- Figure 8 The average number of visitors to the dolphin interaction area (1998-2003) and the estimated increase as a result of the expansion
- Figure 9 Proportion of overseas and domestic visitors to Monkey Mia for 1991-2003
- Figure 10 Proposed location of the wastewater treatment plant
- Figure 11 Expansion to Sewage Treatment Plant
- Figure 12 Modelled Depth of the Wastewater Treatment Plant Facultative and Evaporation Ponds over a Year

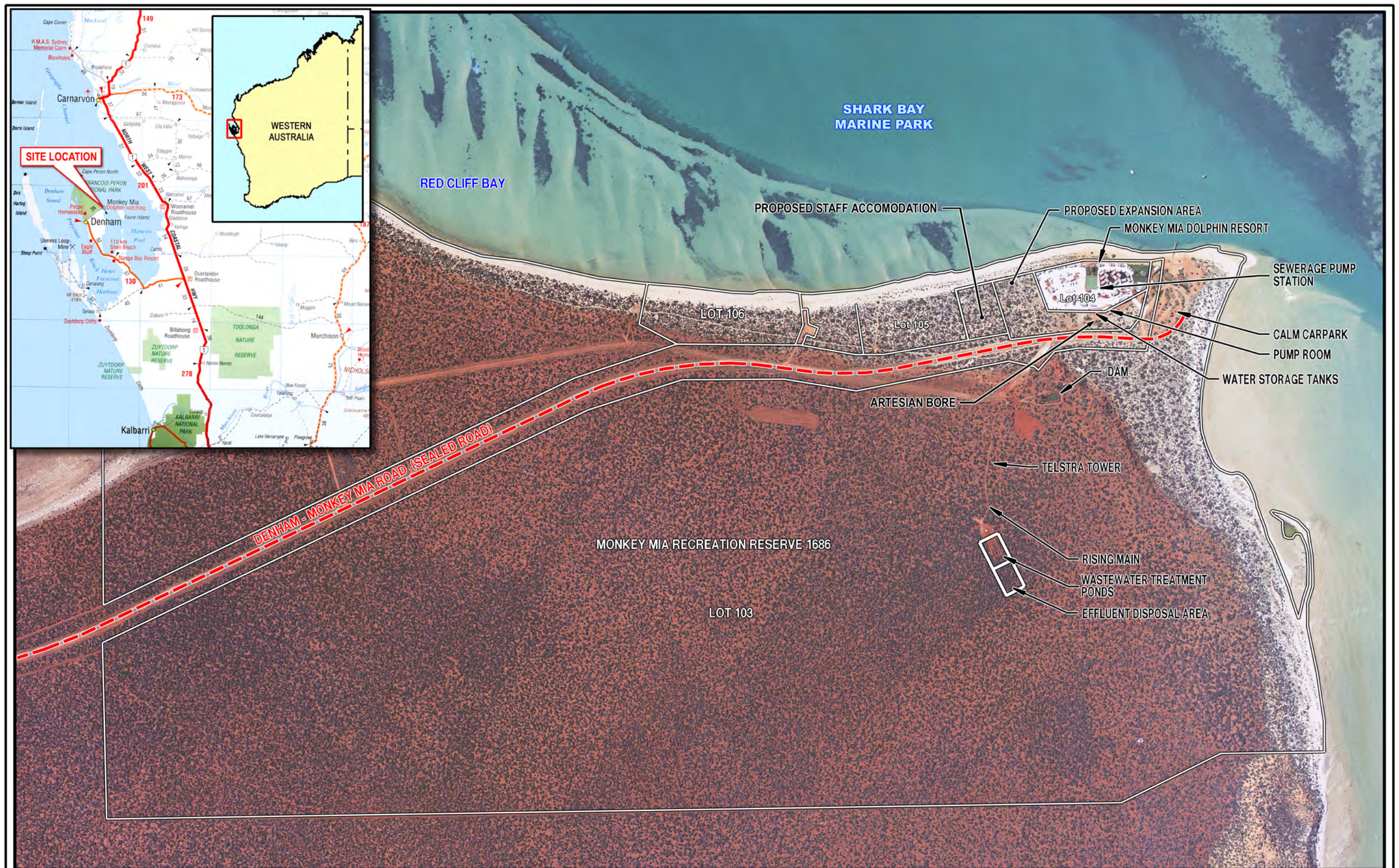


Figure 1

Aerial Photograph
of the Project Area

RPS Bowman Bishaw Gorham
ENVIRONMENTAL MANAGEMENT CONSULTANTS

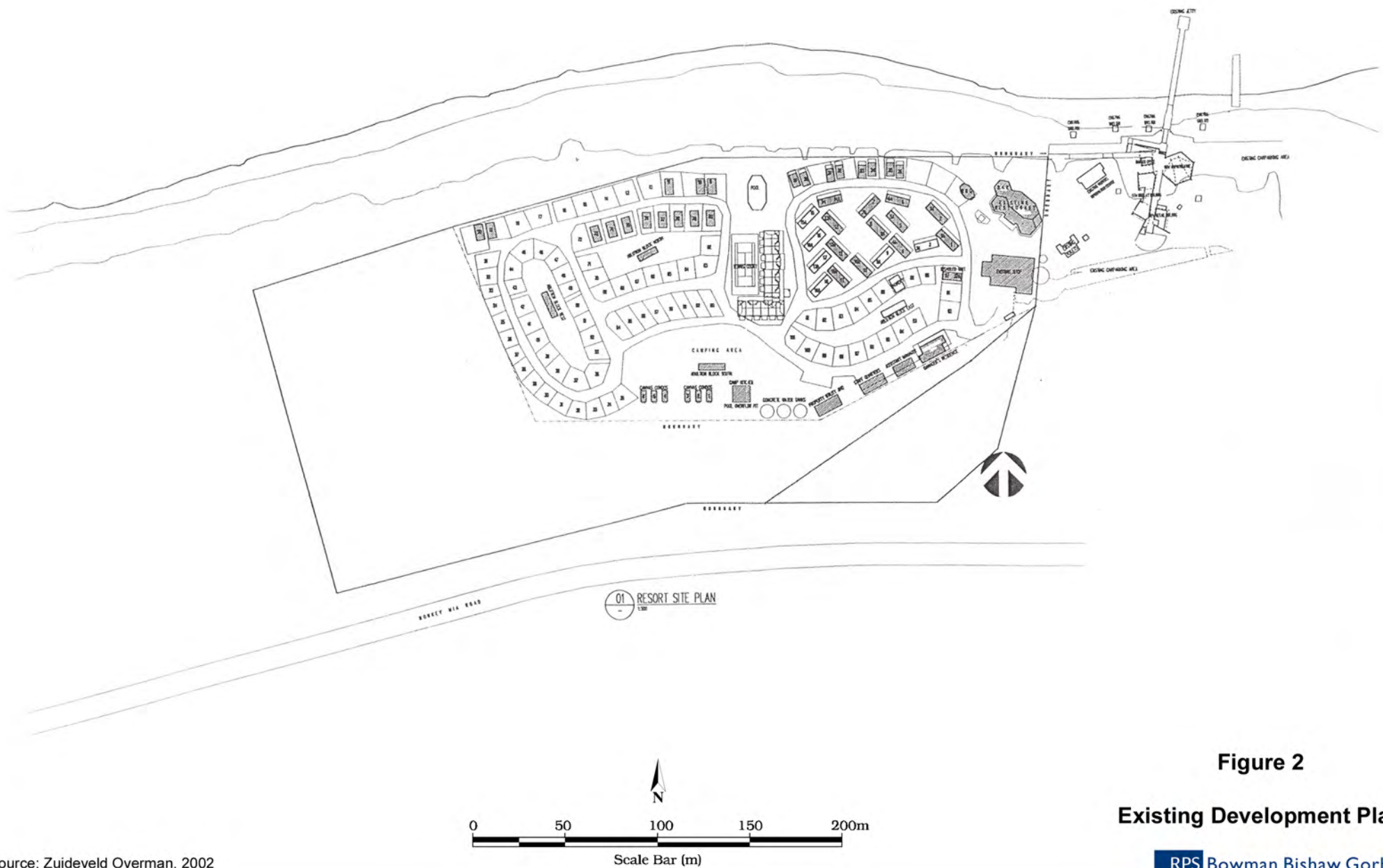


Figure 2

Existing Development Plan



NOTE: LOCATIONS & BOUNDARIES
ARE INDICATIVE ONLY

X: MONITORING BORES

●: SOIL SAMPLING LOCATIONS

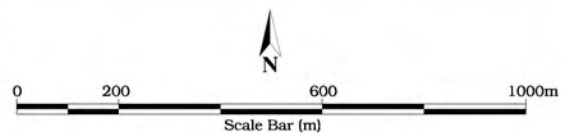
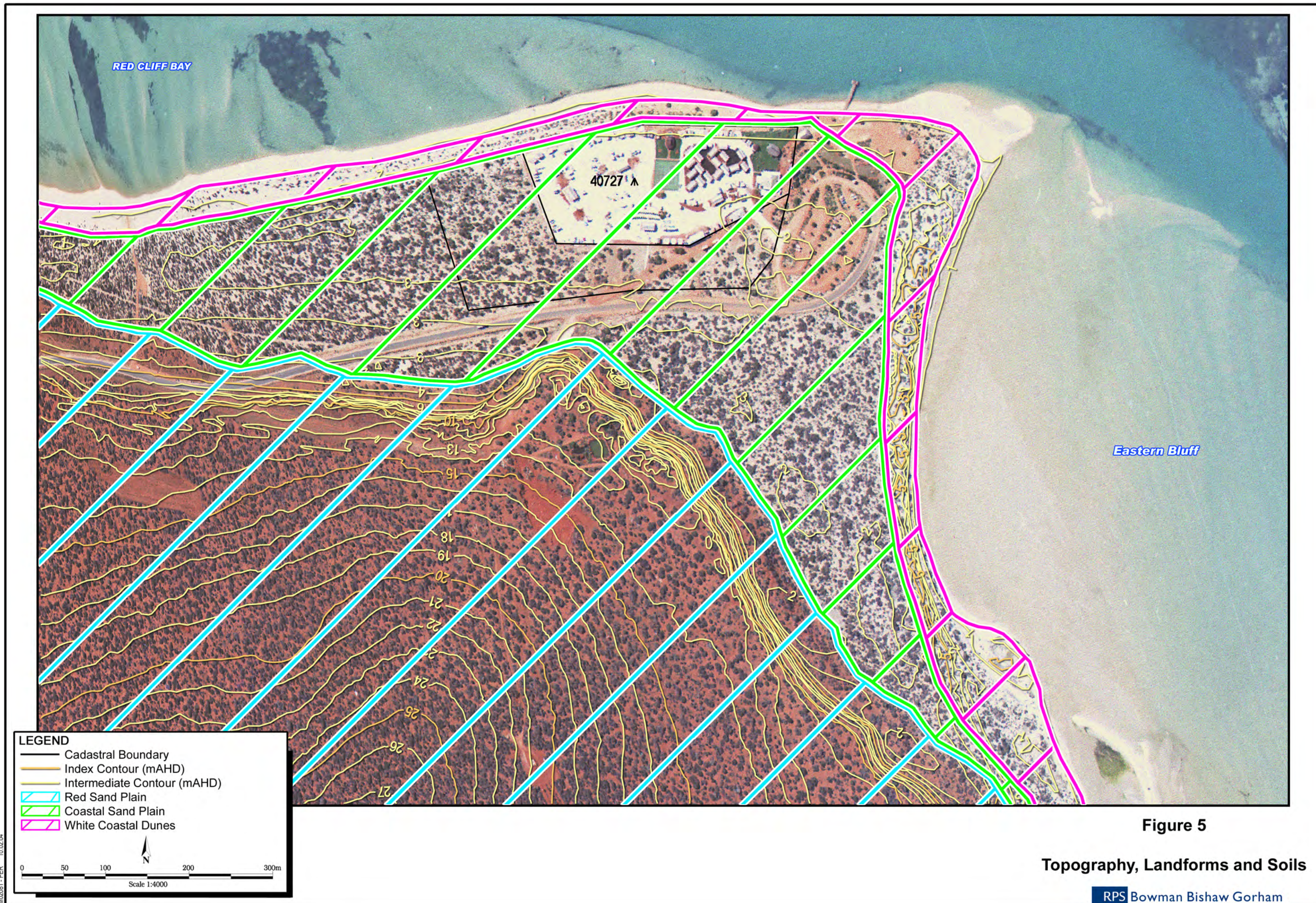


Figure 3

Existing Service Infrastructure



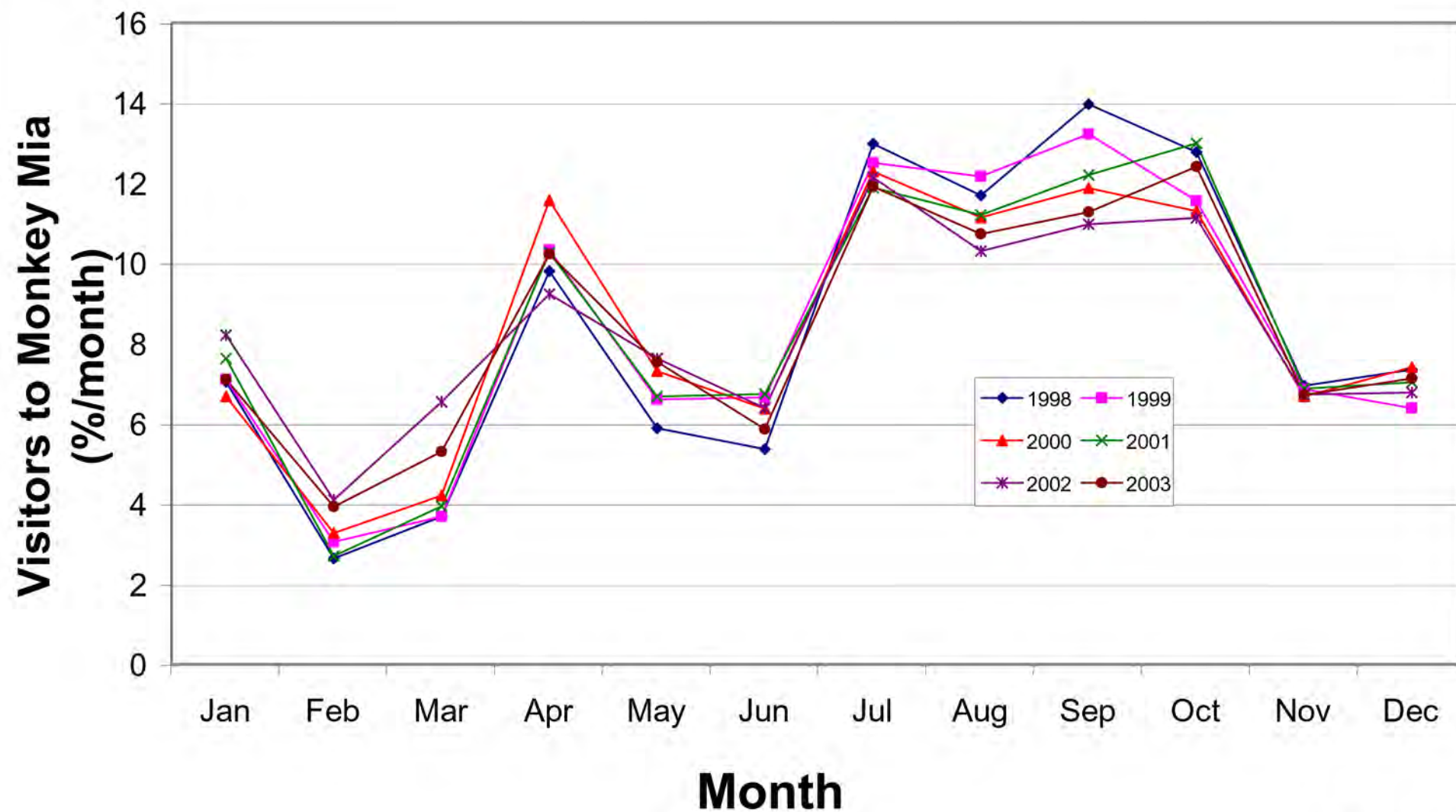


Figure 6

**Proportion of Visitors
to Monkey Mia for each
Month for 1998 - 2003**

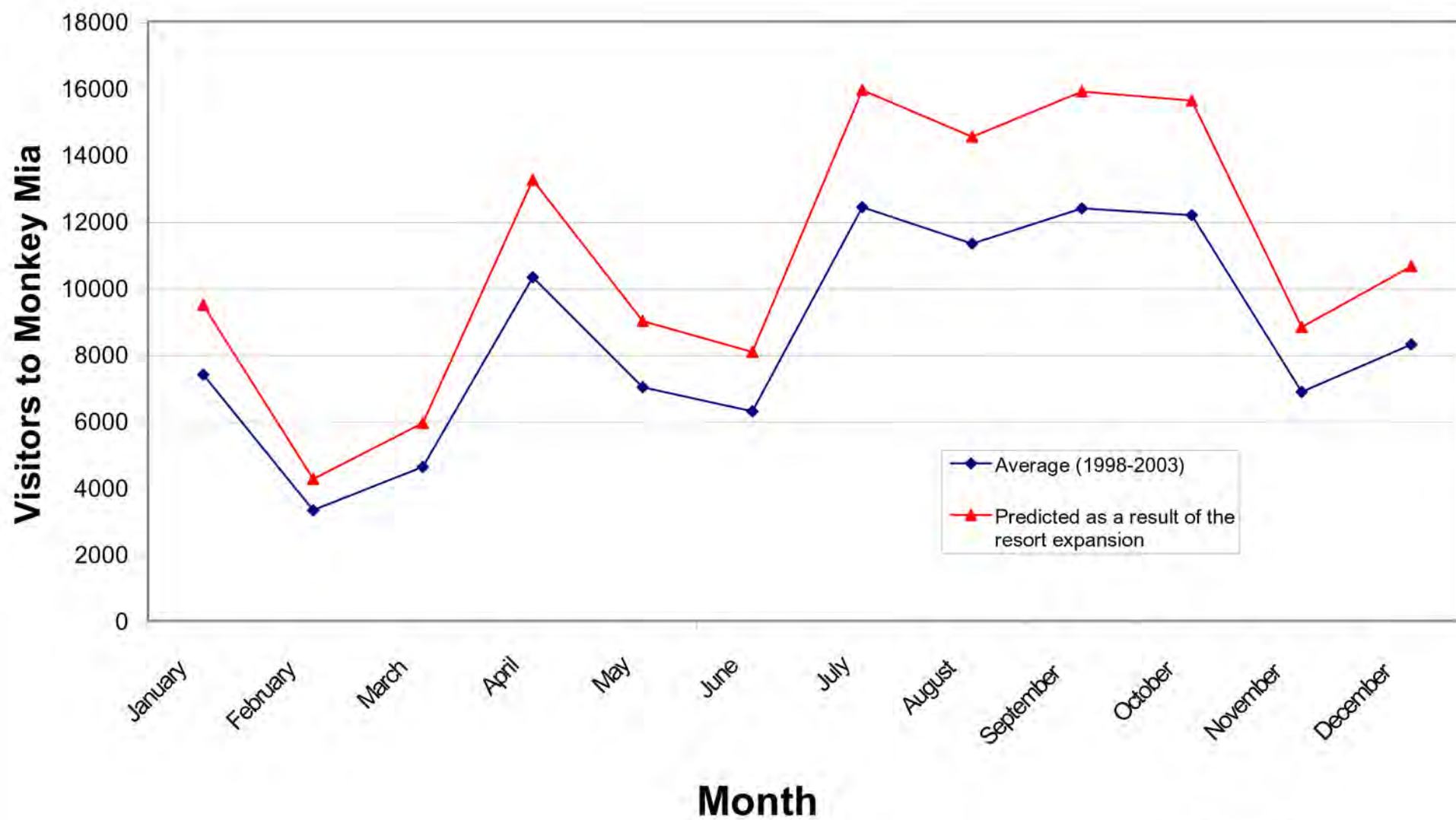


Figure 7

The Average Number of Tourists Visiting Monkey Mia each Month for 1998 - 2003 and the Predicted Increase as a Result of the Expansion

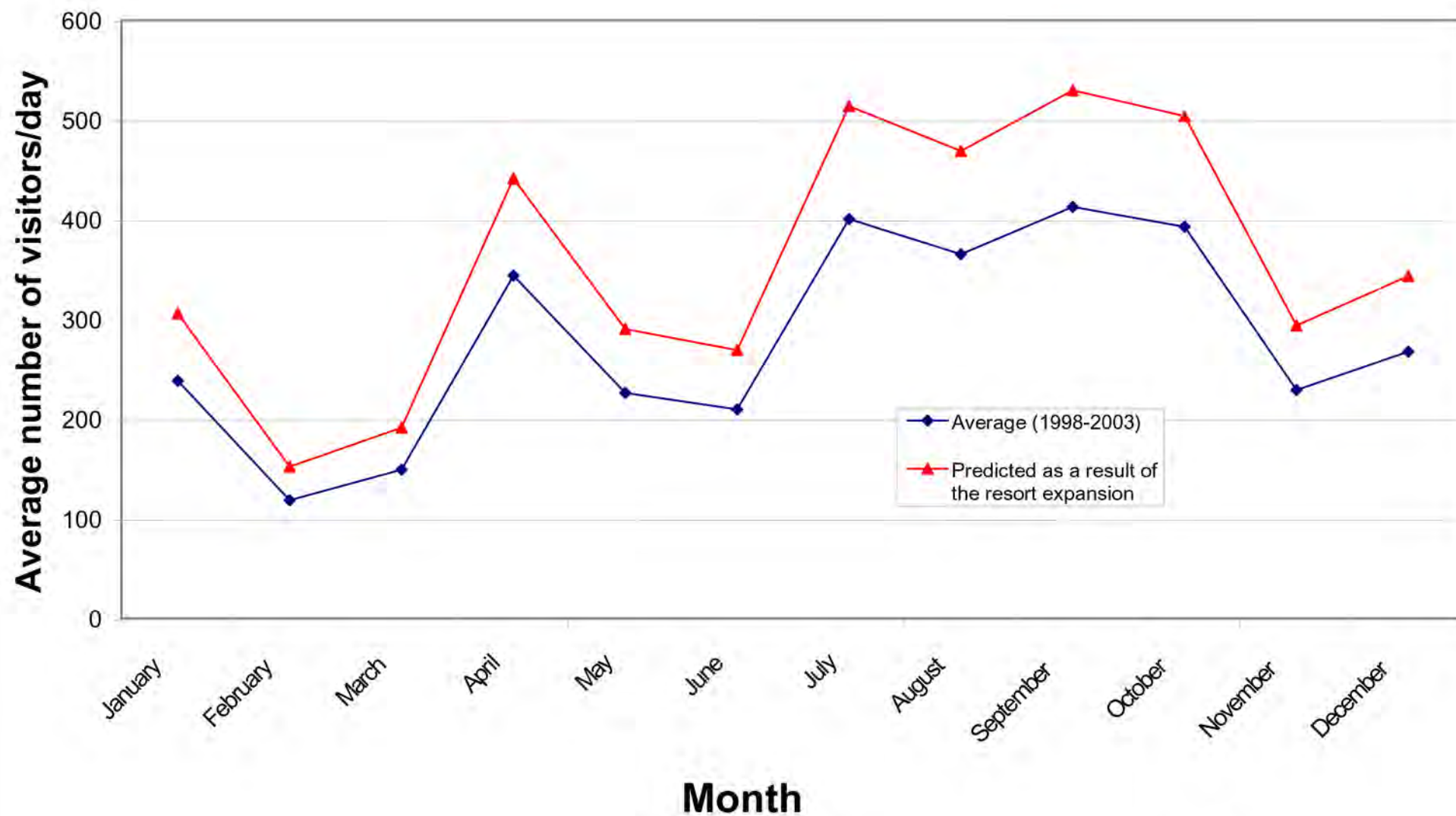


Figure 8

The Average Number of Visitors to the Dolphin Interaction Area (1998 - 2003) and the Estimated Increase as a Result of the Expansion

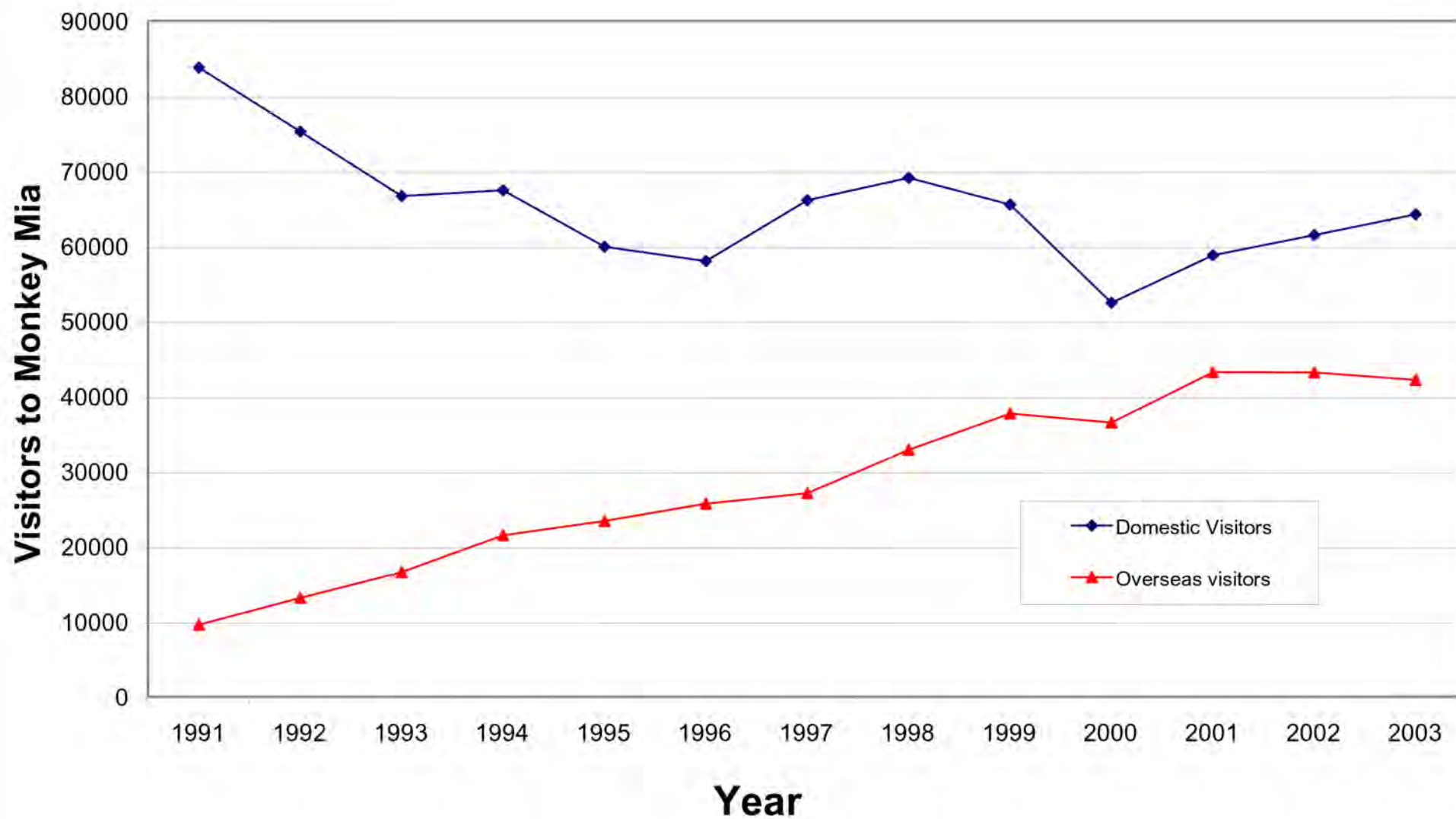
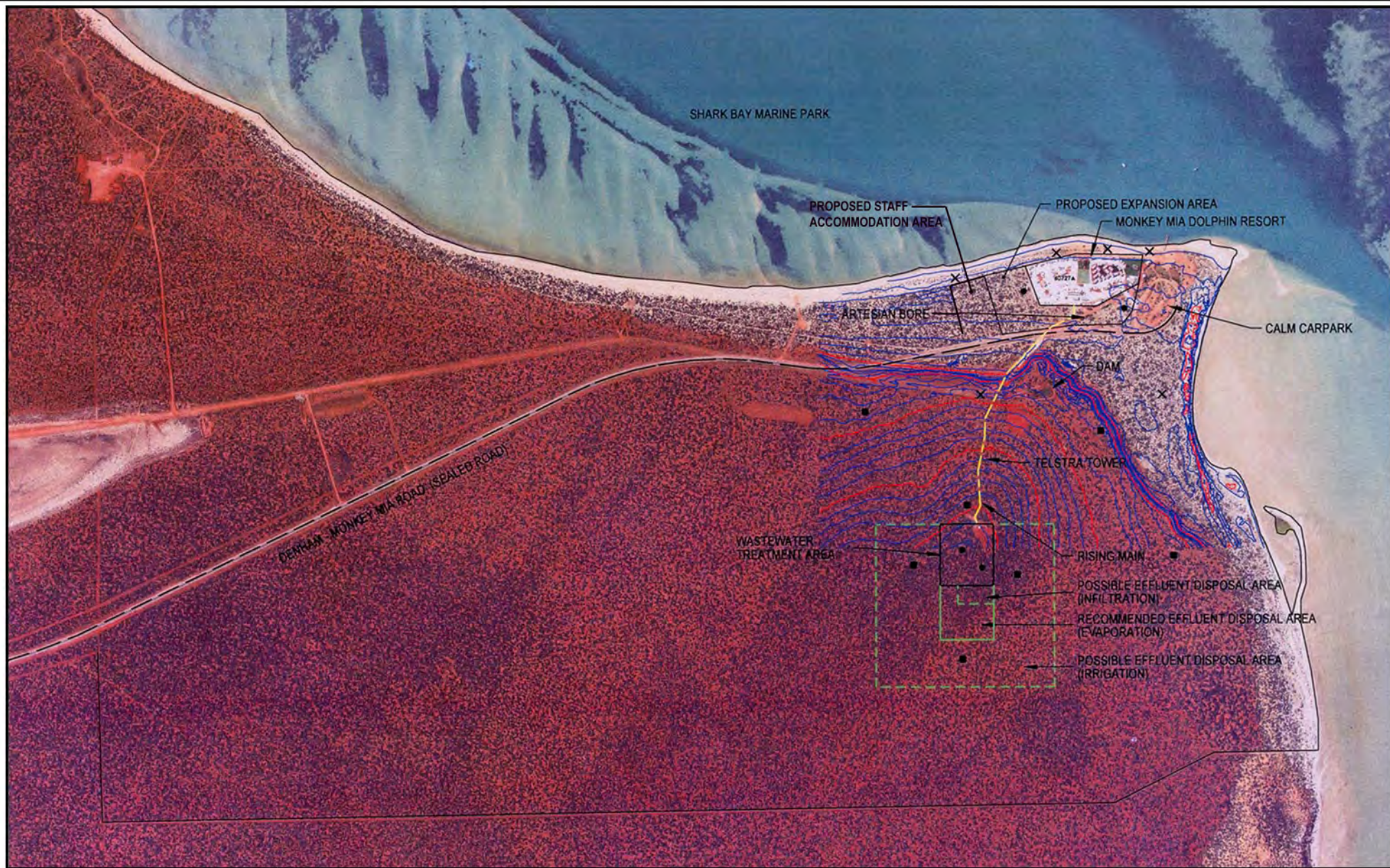


Figure 9

**Portion of Overseas and Domestic
Visitors to Monkey Mia for 1991 - 2003**



NOTE: LOCATIONS ARE INDICATIVE ONLY & WILL VARY DEPENDING ON DETAILED CONTOUR INFORMATION

- X: EXISTING MONITORING BORES
- : PROPOSED MONITORING BORES
- : SOIL SAMPLING LOCATIONS



Figure 10

**Proposed Location of the
Wastewater Treatment Plant**

RPS Bowman Bishaw Gorham
ENVIRONMENTAL MANAGEMENT CONSULTANTS

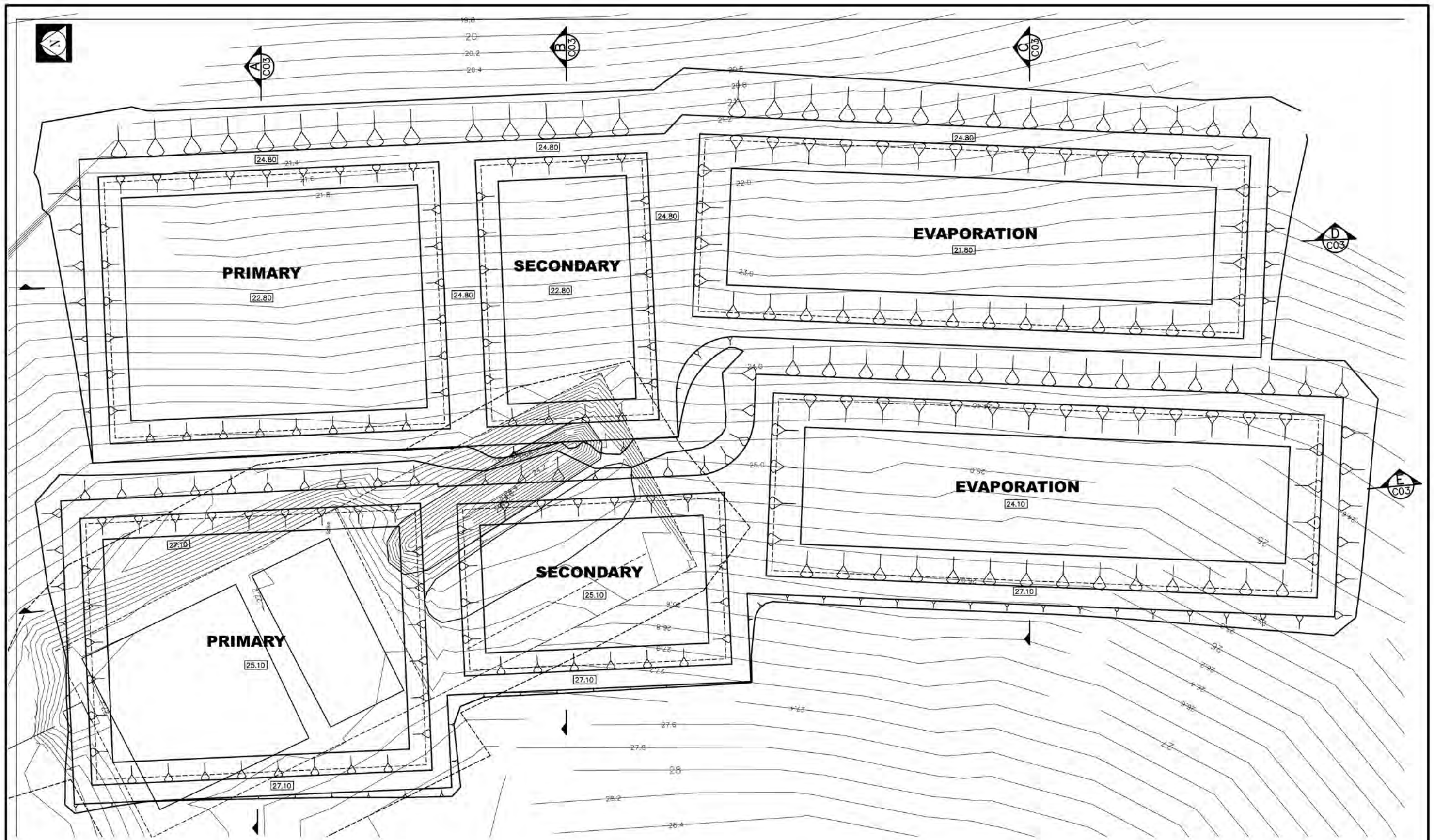


Figure 11

Expansion to Wastewater Treatment Plant

Monkey Mia Dolphin Resort Pond System

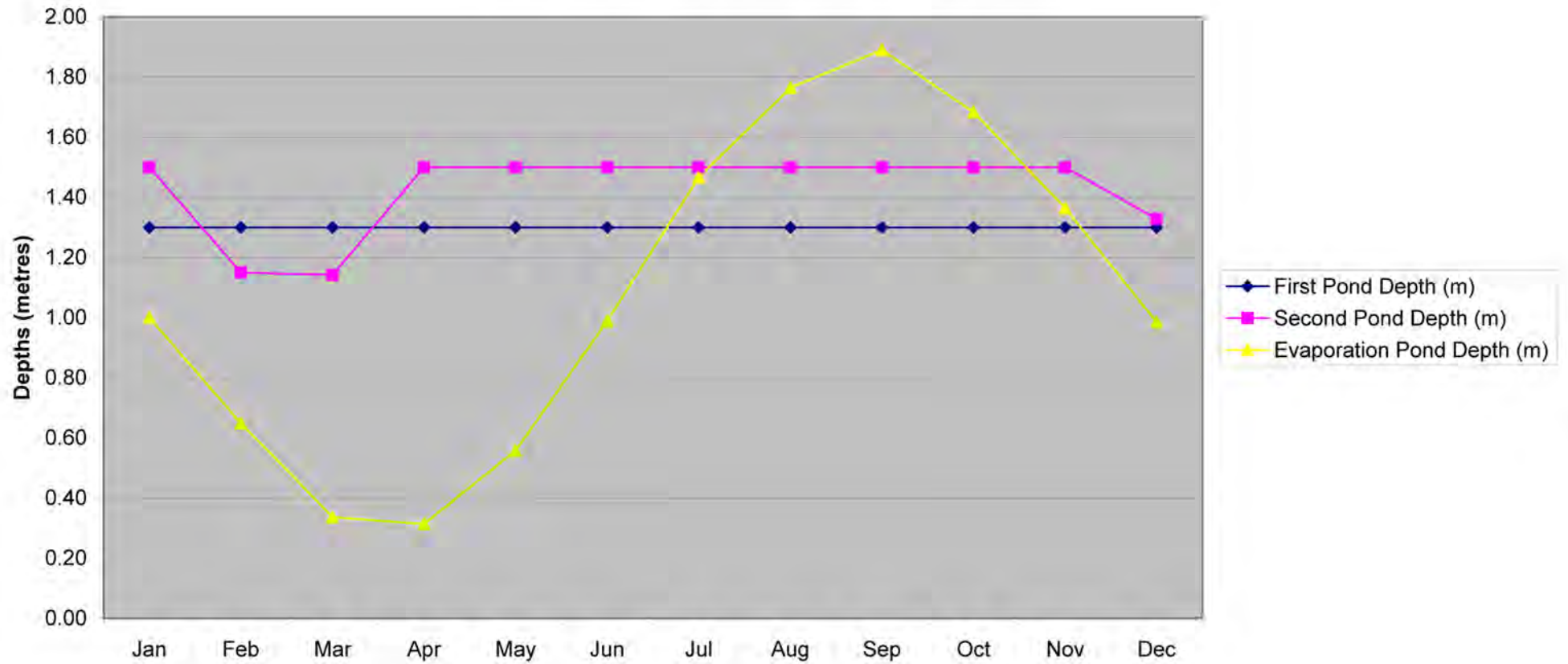


Figure 12

Modelled Depth of the
Wastewater Treatment Plant Faculative
and Evaporation Ponds Over a "Wet" Year