

THIS DOCUMENT

This document has been produced by the Office of the Appeals Convenor as an electronic version of the original Statement for the proposal listed below as signed by the Minister and held by this Office. Whilst every effort is made to ensure its accuracy, no warranty is given as to the accuracy or completeness of this document.

The State of Western Australia and its agents and employees disclaim liability, whether in negligence or otherwise, for any loss or damage resulting from reliance on the accuracy or completeness of this document. Copyright in this document is reserved to the Crown in right of the State of Western Australia. Reproduction except in accordance with copyright law is prohibited.

Published on: 24 September 2014

Statement No. 982

**STATEMENT THAT A PROPOSAL MAY BE IMPLEMENTED
(PURSUANT TO THE PROVISIONS OF SECTION 46 OF THE
ENVIRONMENTAL PROTECTION ACT 1986)**

YILGARN OPERATIONS – WINDARLING RANGE, MT JACKSON RANGE AND
DECEPTION DEPOSIT – SHIRE OF YILGARN AND SHIRE OF MENZIES

Proposal: The proposal is to develop and operate iron ore mines at the Windarling Range, the Mt Jackson Range and the Deception Deposit, located in the Shire of Yilgarn and the Shire of Menzies.

Proponent: Cliffs Asia Pacific Iron Ore Pty Ltd (ACN 001 892 995)

Proponent Address: Level 11
1 William Street
PERTH WA 6000

Assessment Number: 2011

Previous Assessment Number: 1374, 1753, 1761, 1871, 1872, 1887

Report of the Environmental Protection Authority Number: 1521

Previous Report Numbers: 1082, 1303, 1347, 1405, 1426, 1433, 1438

Previous Statement Numbers: 627, 802, 843, 874, 900, 907, 909

This Statement authorises the implementation of the Proposal described and documented in Columns 1 and 2 of Table 2 of Schedule 1. The implementation of the Proposal is subject to the following implementation conditions and procedures which replace and supersede all previous conditions and procedures of Statements 627, 802, 843, 874, 900, 907, and 909. Schedule 2 details definitions of terms and phrases used in the implementation conditions and procedures.

1 Proposal Implementation

1-1 When implementing the proposal, the proponent shall not exceed the authorised extent of the proposal as defined in Column 3 of Table 2 in Schedule 1, unless amendments to the proposal and the authorised extent of the proposal have been approved under the *Environmental Protection Act 1986* (EP Act).

2 Contact Details

- 2-1 The proponent shall notify the CEO of any change of its name, physical address or postal address for the serving of notices or other correspondence within 28 days of such change. Where the proponent is a corporation or an association of persons, whether incorporated or not, the postal address is that of the principal place of business or of the principal office in the State.

3 Compliance Reporting

- 3-1 The proponent shall maintain a Compliance Assessment Plan to the satisfaction of the CEO.
- 3-2 The proponent shall submit to the CEO the Compliance Assessment Plan required by condition 3-1 at least six months prior to the first compliance assessment report required by condition 3-6.

The Compliance Assessment Plan shall indicate:

- (1) the frequency of compliance reporting;
 - (2) the approach and timing of compliance assessments;
 - (3) the retention of compliance assessments;
 - (4) the method of reporting of potential non-compliances and corrective actions taken; and
 - (5) the table of contents of compliance assessment reports.
- 3-3 The proponent shall assess compliance with conditions in accordance with the Compliance Assessment Plan required by condition 3-1.
- 3-4 The proponent shall retain reports of all compliance assessments described in the compliance assessment plan required by condition 3-1 and shall make those reports available when requested by the CEO.
- 3-5 The proponent shall advise the CEO of any potential non-compliance within seven days of that non-compliance being known.
- 3-6 The proponent shall submit to the CEO an annual Compliance Assessment Report by 30 April of each year, or as otherwise agreed by the CEO, addressing the period of the preceding calendar year. The compliance assessment report shall:
- (1) be endorsed by the proponent's Managing Director / General Manager / Chief Executive Officer or a person delegated to sign on the Managing Director's / General Manager's / Chief Executive Officer's behalf;
 - (2) address the proponent's compliance with each condition of this Statement;
 - (3) describe corrective and preventative actions taken in the event of a non-compliance; and
 - (4) indicate any proposed changes to the Compliance Assessment Plan required by condition 3-1.

4 Public Availability of Plans and Reports

- 4-1 Subject to condition 4-2, within a reasonable time period approved by the CEO of the issue of this Statement and for the remainder of the life of the proposal,

the proponent shall make publicly available, in a manner approved by the CEO, all environmental plans and reports required under this Statement.

4-2 If any parts of the plans or reports, referred to in condition 4-1 contains particulars of:

- (1) a secret formula or process; or
- (2) confidential commercially sensitive information;

the proponent may submit a request for approval from the CEO to not make those parts of the plans or reports publically available. In making such a request the proponent shall provide the CEO with an explanation and reasons why those parts of the plans or reports should not be made publically available.

5 Environmental Management Plans

5-1 The proponent shall implement the proposal in accordance with the following approved Environmental Management Plans until condition 6-1 and condition 9-1 have been complied with, or unless otherwise agreed by the CEO:

- (1) Koolyanobbing Expansion Project – Northern Tenements Transport Corridor (Haul Road) Environmental Management Plan (2010).
- (2) Koolyanobbing Iron Ore Project – Biodiversity Research and Management Plan (2009).
- (3) Koolyanobbing Iron Ore Project – Malleefowl Conservation Plan (2009).
- (4) Yilgarn Operations Land Clearing Management Plan (2011).
- (5) Yilgarn Operations Dust Management Plan (2011).
- (6) Yilgarn Operations Fire Management Plan (2011).
- (7) Yilgarn Operations Weed Management Plan (2011).
- (8) Mt Jackson J1 Proposed Flora and Vegetation Monitoring Program (2012).

6 Flora and Vegetation Management Plan

6-1 The proponent shall ensure that the implementation of the proposal is carried out in a manner that minimises the direct and indirect impacts to conservation significant flora and vegetation through implementation of the Flora and Vegetation Management Plan required by conditions 6-2 and 6-3.

6-2 Within 12 months of the date of this Statement, or as otherwise agreed by the CEO, the proponent shall submit to the CEO a Flora and Vegetation Management Plan for the Yilgarn Operations, to the requirements of the CEO, in consultation with Parks and Wildlife.

6-3 The Flora and Vegetation Management Plan shall include:

- (1) the management actions, targets and criteria to be applied to avoid and/or minimise the environmental impacts to conservation significant flora and vegetation from processes including, but not limited to, land clearing, changes in surface water flows, introduced flora (weeds), dust, fire, saline water and introduced fauna which may result from implementation of the proposal; and

- (2) monitoring to measure the performance of the management actions against the targets and criteria identified in the Flora and Vegetation Management Plan.
- 6-4 The proponent shall implement the approved Flora and Vegetation Management Plan required by condition 6-2, and continue implementation until otherwise agreed by the CEO, on advice of Parks and Wildlife.
- 6-5 In the event that monitoring required by condition 6-3 indicates a decline in the health or abundance of conservation significant flora and/or vegetation outside areas to be cleared the proponent shall:
 - (1) report such findings to the CEO within 21 days of the decline being identified;
 - (2) provide information which allows determination of the cause of the decline;
 - (3) submit actions to be undertaken to remediate the decline to the CEO within 21 days of the determination being made by the CEO if the decline is determined by the CEO to be a result of activities undertaken in implementing the proposal; and
 - (4) implement the actions to remediate the decline of conservation significant flora and vegetation upon approval of the CEO, on advice of Parks and Wildlife, and shall continue until such time as the CEO, on advice of Parks and Wildlife, determines that the remedial actions may cease.
- 6-6 Revisions to the Flora and Vegetation Management Plan may be approved by the CEO on the advice of Parks and Wildlife.
- 6-7 The proponent shall implement approved revisions of the Flora and Vegetation Management Plan required by condition 6-6.
- 7 Restricted Areas and Management of *Tetratheca paynterae* ssp. *paynterae* at the Windarling Range**
- 7-1 For the purposes of protecting the Rare Flora species *Tetratheca paynterae* ssp. *paynterae*, no ground disturbing activity shall occur in the area designated 'Area A', as identified in Figure 2 of Schedule 1.
- 7-2 For the purposes of protecting the Rare Flora species *Tetratheca paynterae* ssp. *paynterae* the proponent shall ensure that no ground disturbing activity shall occur in the area designated 'Area B' identified on Figure 2 of Schedule 1, unless the requirements of conditions 7-3, 7-4 and 7-5 have been complied with.
- 7-3 Where the proponent seeks to undertake ground disturbing activity within 'Area B', the proponent shall prepare a *Tetratheca paynterae* ssp. *paynterae* Research and Management Plan and a *Tetratheca paynterae* ssp. *paynterae* Recovery Plan to the requirements of the Minister for Environment on the advice of Parks and Wildlife.
- 7-4 The *Tetratheca paynterae* ssp. *paynterae* Research and Management Plan required by condition 7-3 shall include:
 - (1) monitoring of the numbers of *Tetratheca paynterae* ssp. *paynterae* individuals, their health, viability of the population, and reproductive success within 'Area A' and 'Area B';

- (2) research into the ecology and potential translocation of *Tetratheca paynterae* ssp. *paynterae* with a focus on the specific natural habitat requirements of the species;
 - (3) research into the pollination vector(s) of *Tetratheca paynterae* ssp. *Paynterae* to identify the vector(s) and the specific ecological requirements;
 - (4) management measures to protect the health, viability, and reproductive success of the *Tetratheca paynterae* ssp. *paynterae* population; and
 - (5) measures to support the secure conservation tenure for the remaining population of *Tetratheca paynterae* ssp. *paynterae*.
- 7-5 The proponent shall implement the approved *Tetratheca paynterae* ssp. *paynterae* Research and Management Plan and *Tetratheca paynterae* ssp. *paynterae* Recovery Plan required by condition 7-3, until advised by the Minister for Environment that implementation may cease.
- 7-6 Ground disturbing activity within the area designated 'Area B' may only occur when the Minister for Environment, on the advice of Parks and Wildlife, is satisfied and provides written advice stating that it has been demonstrated that ground disturbing activity in whole or part of the area designated 'Area B', will not result in a reduction in the viability of the population of *Tetratheca paynterae* ssp. *paynterae*, and may proceed.
- 7-7 The proponent shall report the results and outcomes of the *Tetratheca paynterae* ssp. *paynterae* Research and Management Plan and *Tetratheca paynterae* ssp. *paynterae* Recovery Plan annually to Parks and Wildlife.
- 8 Mitigation of impacts to *Calytrix viscida* for the Deception Deposit**
- 8-1 Prior to impacting the Priority Flora species *Calytrix viscida* at the Deception Deposit, the proponent shall collect seeds and plant material of the *Calytrix viscida* that will be impacted. The seeds and plant material will be stored in a facility that is capable of maintaining their viability for use during rehabilitation works at the Deception Deposit.
- 8-2 Where the *Calytrix viscida* is impacted by mining at the Deception Deposit, the proponent shall undertake a targeted regional flora survey to the satisfaction of the CEO to improve knowledge of the presence and abundance of *Calytrix viscida* outside of the approved disturbance area for the Deception Deposit. The survey shall be conducted in accordance with Environmental Protection Authority Guidance Statement 51 *Terrestrial Flora and Vegetation Surveys for Environmental Impact Assessment in Western Australia* (June 2004) or its revisions.
- 8-3 Unless otherwise agreed with the CEO, the proponent shall report to the CEO on the findings of the targeted regional flora survey required under condition 8-2 within 24 months of impact to *Calytrix viscida*.
- 9 Fauna Management Plan**
- 9-1 The proponent shall ensure that the implementation of the proposal is carried out in a manner that minimises the direct and indirect impacts to conservation significant fauna through implementation of the Fauna Management Plan required by conditions 9-2 and 9-3.

- 9-2 Within 12 months of the date of this Statement, or as otherwise agreed by the CEO, the proponent shall submit to the CEO a Fauna Management Plan for the Yilgarn Operations to the requirements of the CEO, in consultation with Parks and Wildlife.
- 9-3 The Fauna Management Plan shall include:
- (1) the management actions, targets and/or criteria to be applied to avoid and/or minimise the environmental impacts to conservation significant fauna, including Malleefowl (*Leipoa ocellata*), from processes including, but not limited to, land clearing, changes in surface water flows, introduced flora (weeds), dust, fire, saline water and introduced fauna resulting from implementation of the proposal; and
 - (2) monitoring to measure and report the performance of management actions against the targets and/or criteria identified in condition 9-3(1).
- 9-4 The proponent shall implement the Fauna Management Plan required by condition 9-2, and continue implementation unless otherwise agreed by the CEO, on the advice of Parks and Wildlife.
- 9-5 In the event that monitoring undertaken in accordance with condition 9-3 indicates a decline in the health or abundance of conservation significant fauna, including Malleefowl (*Leipoa ocellata*), populations within the proposal area:
- (1) report such findings to the CEO within 21 days of the decline being identified;
 - (2) provide information which allows determination of the cause of the decline;
 - (3) submit actions to be undertaken to remediate the decline to the CEO within 21 days of the determination being made by the CEO if the decline is determined by the CEO to be a result of activities undertaken in implementing the proposal; and
 - (4) implement the actions to remediate the decline of conservation significant fauna upon approval of the CEO, on advice of Parks and Wildlife, and shall continue until such time as the CEO, on advice of Parks and Wildlife, determines that the remedial actions may cease.
- 9-6 Revisions to the Fauna Management Plan may be approved by the CEO on the advice of Parks and Wildlife.
- 9-7 The proponent shall implement approved revisions of the Fauna Management Plan required by condition 9-6.
- 10 Residual Impacts and Risk Management Measures (Environmental Offsets)**
- 10-1 To offset the impact of mining at the Windarling Range W1 deposit on the landscape and geological features of the range and local area and related conservation values, within 12 months following the purchase of the former Ennuin Pastoral Lease by Parks and Wildlife, the proponent shall make a financial contribution of \$50,000 AUD per year over a 5-year period (total

\$250,000 AUD) to Parks and Wildlife, to assist with the management of the former Ennuin Pastoral Lease.

- 10-2 To offset the impact of mining at the Windarling Range W4 East deposit on the Rare Flora species *Ricinocarpus brevis*, the proponent shall provide a minimum financial contribution of \$640,000 AUD over a five year period for the purpose of undertaking works that seek to contribute to the scientific understanding of the long term recovery and protection of sustainable populations of *Ricinocarpus brevis* at the Windarling Range. The works will commence within 12 months following impact to *Ricinocarpus brevis* at the Windarling Range W4 East Deposit. The works will be implemented in consultation with Parks and Wildlife and to the satisfaction of the CEO.
- 10-3 To offset the impact of mining at the Windarling Range W4 East deposit on the Rare Flora species *Ricinocarpus brevis*, the proponent will provide a minimum financial contribution of \$40,000 AUD for the translocation of a proportion of individuals of *Ricinocarpus brevis* that will be removed by mining of the Windarling Range W4 East Deposit. The number of individuals to be translocated will be subject to practicability considerations such as plant size and site accessibility. A translocation plan shall be developed and implemented by the proponent in consultation with Parks and Wildlife, and to the satisfaction of the CEO.

11 Mine Closure and Rehabilitation

- 11-1 The proponent shall ensure that the mining operations are closed, decommissioned and rehabilitated in an ecologically sustainable manner, consistent with agreed post-mining outcomes and land uses, without unacceptable liability to the State of Western Australia through implementation of a Mine Closure Plan required by condition 11-2.
- 11-2 Within 12 months of the date of this Statement, or as otherwise agreed by the CEO, the proponent shall submit a Mine Closure Plan for the Yilgarn Operations to the requirements of the CEO, in consultation with Parks and Wildlife and the DMP. The Mine Closure Plan shall:
- (1) be prepared in accordance with the *Guidelines for Preparing Mine Closure Plans, June 2011* (Department of Mines and Petroleum and Environmental Protection Authority) or its revisions;
 - (2) detail the methods to be used for progressive rehabilitation of disturbed areas with vegetation composed of native species of local provenance such that the percentage cover of living vegetation is comparable to natural vegetation surrounding the proposal;
 - (3) detail the methods, including monitoring and recording programs for feral animal populations and the health and condition of conservation significant flora and vegetation, and conservation significant fauna species, including Malleefowl (*Leipoa ocellata*), which will be used to ensure that surface water within pit lakes does not result in an increase in introduced fauna to a level that may have a measurable impact on conservation significant flora and vegetation or conservation significant fauna species;

- (4) detail the methods to ensure the effectiveness of backfilling in preventing the presence of permanent surface water in those pits approved for backfilling, following the completion of backfilling, unless otherwise approved by the CEO, in consultation with Parks and Wildlife; and
 - (5) examine opportunities for backfilling the Windarling W3/5 pit voids above the watertable, to ensure that impacts on important conservation values and any long term liabilities for future management are minimised.
- 11-3 The proponent shall implement the approved Mine Closure Plan required by condition 11-2 and continue implementation until otherwise agreed by the CEO, on the advice of Parks and Wildlife and the DMP.
- 11-4 Revisions to the Mine Closure Plan may be approved by the CEO on the advice of Parks and Wildlife and the DMP.
- 11-5 The proponent shall implement approved revisions of the Mine Closure Plan required by condition 11-4.

[Signed 24 September 2014]

Albert Jacob MLA
MINISTER FOR ENVIRONMENT; HERITAGE

Schedule 1

Table 1: Summary of the Proposal

Proposal Title	Yilgarn Operations – Windarling Range, Mt Jackson Range and Deception Deposit – Shire of Yilgarn and Shire of Menzies.
Short Description	The proposal is to develop and operate above and below groundwater table open cut iron ore mine pits, waste rock landforms, ore stockpiles, haul roads and support infrastructure at the W1, W2, W3/5, W4 West and W4 East pits at the Windarling Range, and the J1, J2 and J3 pits at the Mt Jackson Range; and the Deception Deposit; located in the Shire of Yilgarn and the Shire of Menzies.

Table 2: Location and authorised extent of physical and operational elements

Column 1	Column 2	Column 3
Element	Location	Authorised Extent
Iron ore mine pits	<p>Windarling Range – as defined in Figure 2 and by the spatial coordinates in Table 1 of Schedule 3.</p> <p>Mt Jackson Range – as defined in Figure 3 and by the spatial coordinates in Table 2 of Schedule 3.</p> <p>Deception Deposit – as defined in Figure 4 and by the spatial coordinates in Table 3 of Schedule 3.</p>	<p>Not more than 233 hectares.</p> <ul style="list-style-type: none"> W1 East, W2 and W3/5 to be mined below groundwater table. W2 to be backfilled above groundwater table. W1 West, W4 West and W4 East to be mined above the groundwater table. <p>Not more than 133 hectares.</p> <ul style="list-style-type: none"> J1 East, J2 and J3 to be mined above groundwater table. J1 West to be mined below groundwater table. <p>Not more than 118 hectares.</p> <ul style="list-style-type: none"> Deception Deposit to be mined below groundwater table.
Waste Rock Landforms	<p>Windarling Range – See Figure 2.</p> <p>Mt Jackson Range – See Figure 3.</p> <p>Deception Deposit – See Figure 4.</p>	<p>Not more than 410 hectares.</p> <p>Not more than 263 hectares.</p> <p>Not more than 258 hectares.</p>
Associated infrastructure (includes internal mine roads, ore stockpiles, rehabilitation material stockpiles, airstrip and mine camp)	<p>Windarling Range – See Figure 2.</p> <p>Mt Jackson Range – See Figure 3.</p> <p>Deception Deposit – See Figure 4.</p>	<p>Not more than 204 hectares, including 25.1 hectares for Windarling Range Airstrip.</p> <p>Not more than 259 hectares.</p> <p>Not more than 53 hectares.</p>
Haul Roads	Figures 1 to 4.	Not more than 609 hectares.

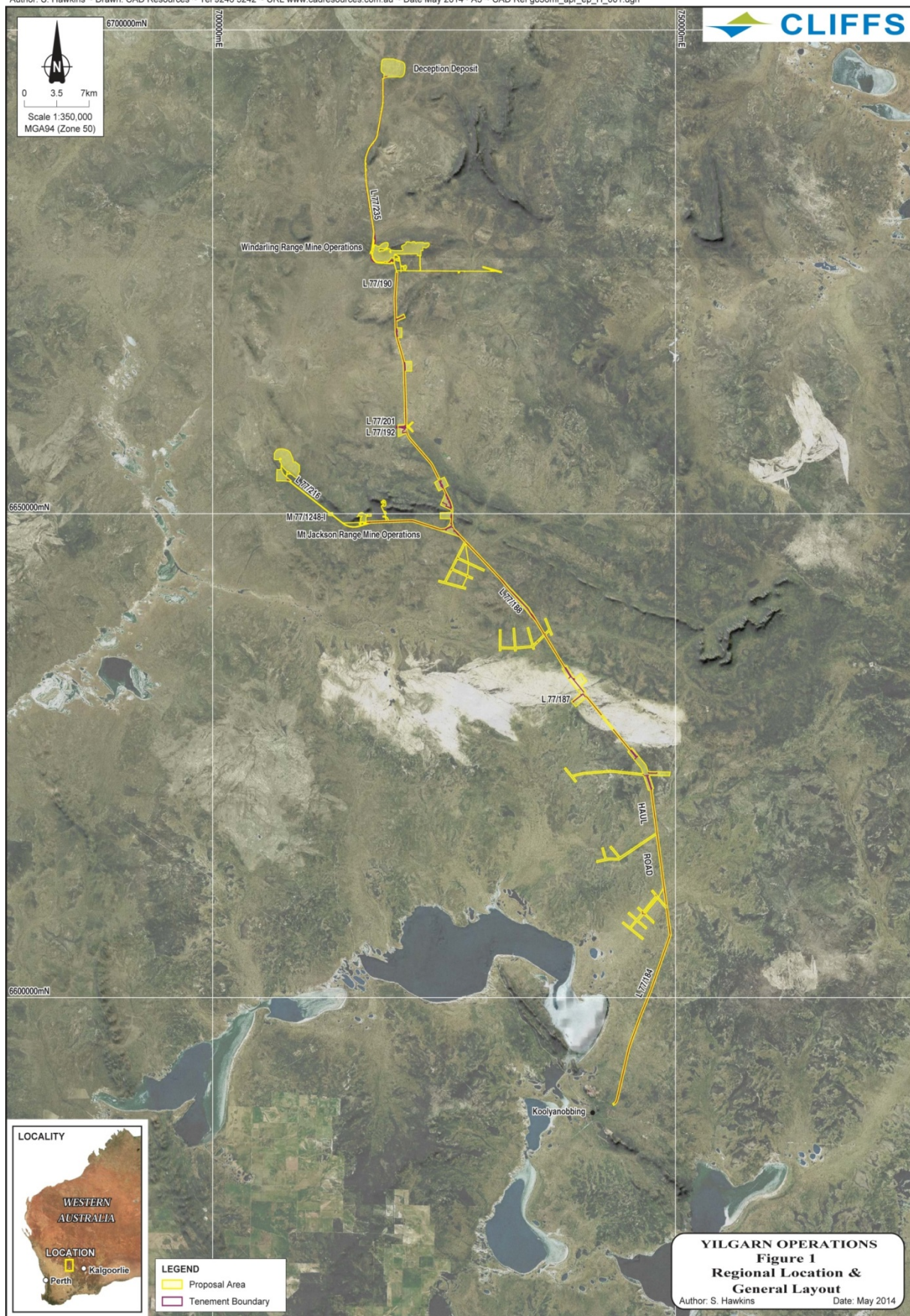
Figures

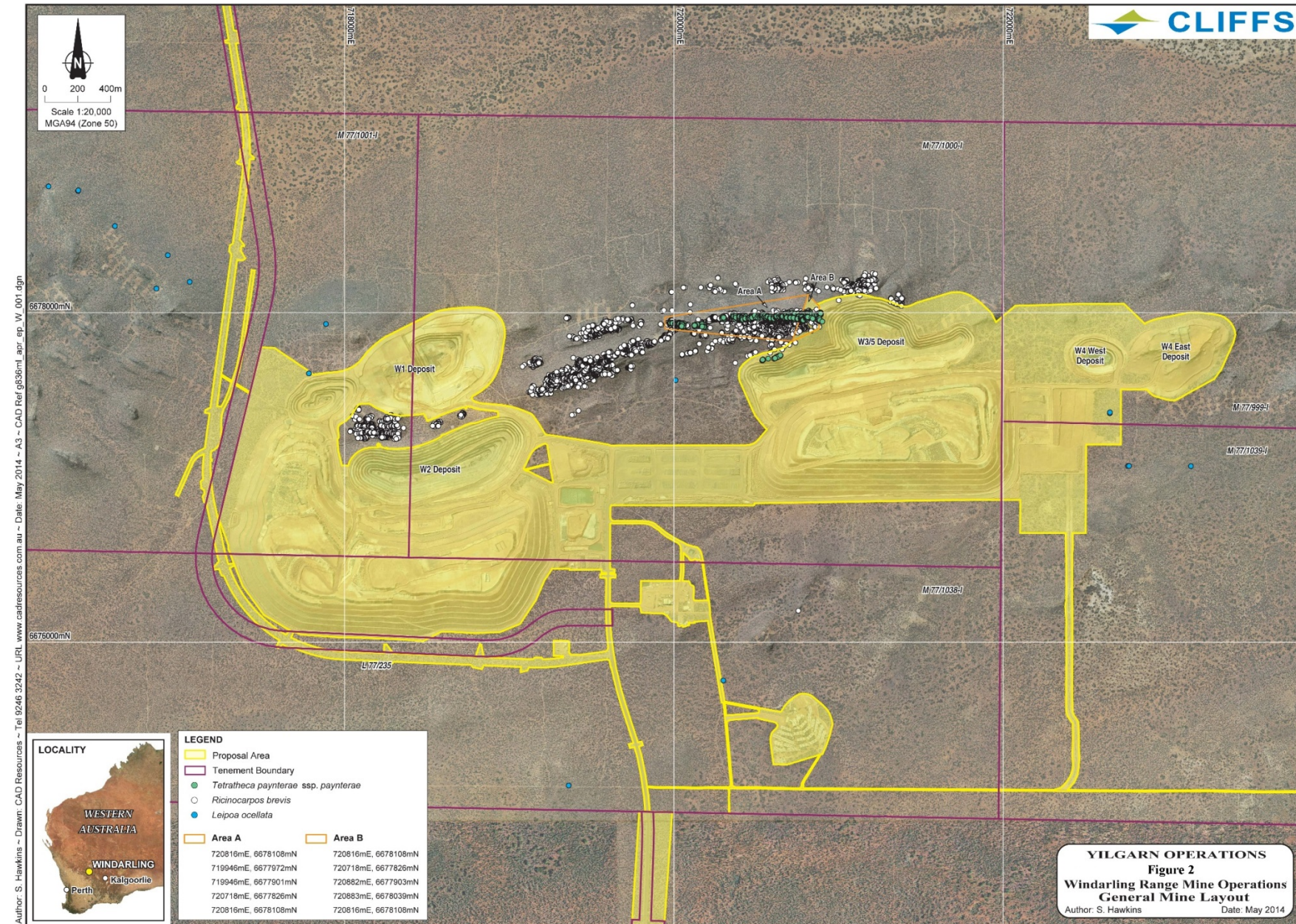
Figure 1 Yilgarn Operations - Regional Location and General Layout

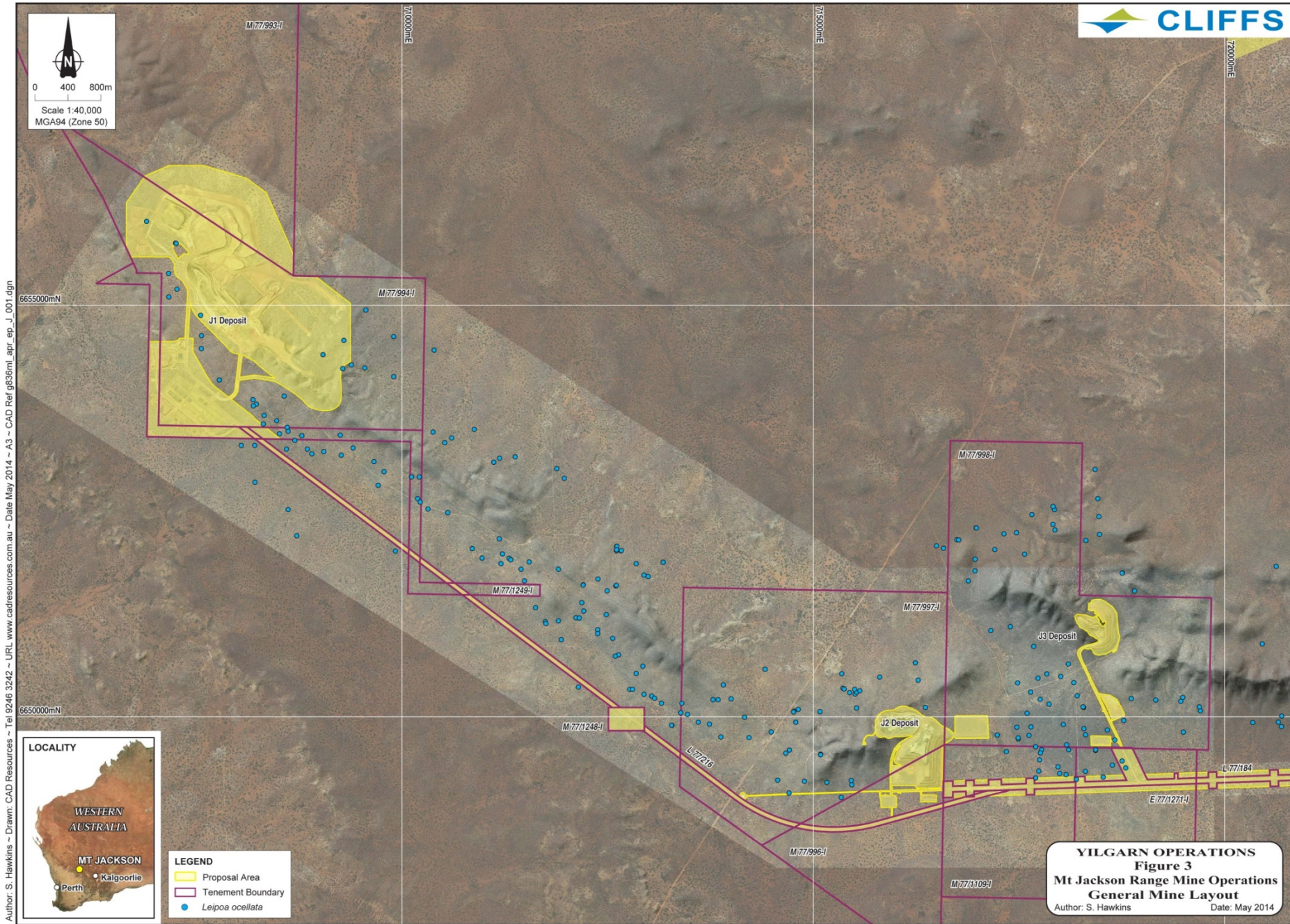
Figure 2 Yilgarn Operations - Windarling Range Mine Operations General Mine Layout

Figure 3 Yilgarn Operations - Mt Jackson Range Mine Operations General Mine Layout

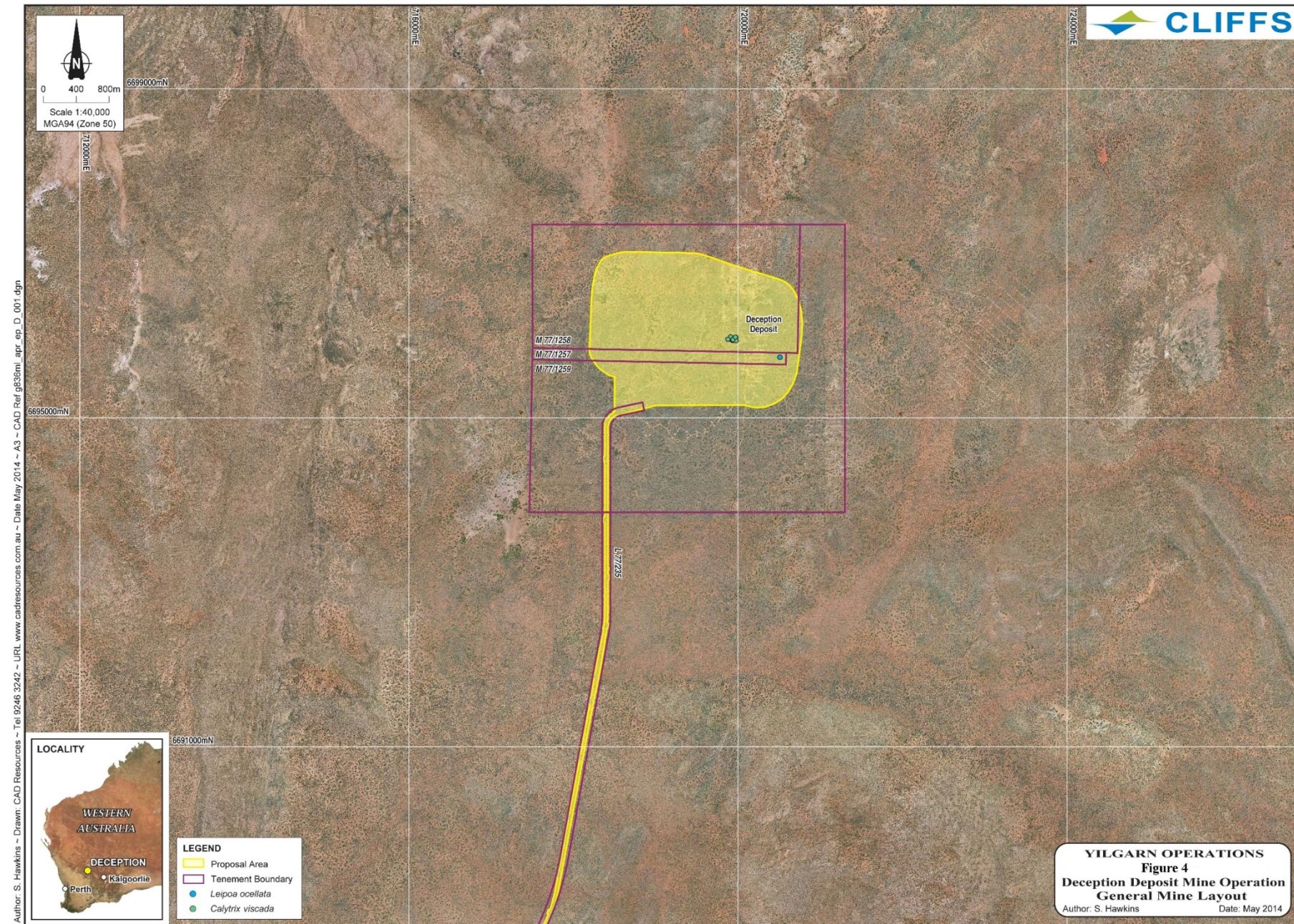
Figure 4 Yilgarn Operations - Deception Deposit Mine Operations General Mine Layout







Author: S. Hawkins ~ Drawn: CAD Resources ~ Tel 9246 3242 ~ URL www.cadresources.com.au ~ Date May 2014 ~ A3 ~ CAD Ref g836ml_apr_ep_J_001.dgn



Schedule 2

Term or Phrase	Definition
Area A	the land area labelled as 'Area A' on Figure 2 of Schedule 1 at the Windarling Range. Area A contains an estimated 50% of the recorded individuals of the Rare Flora taxon <i>Tetratheca paynterae</i> ssp. <i>paynterae</i> .
Area B	the land area labelled as 'Area B' on Figure 2 of Schedule 1 at the Windarling Range. Area B contains an estimated 20% of the recorded individuals of the Rare Flora taxon <i>Tetratheca paynterae</i> ssp. <i>paynterae</i>
AUD	Australian Dollar
CEO	The Chief Executive Officer of the Department of the Public Service of the State responsible for the administration of section 48 of the <i>Environmental Protection Act 1986</i> (WA), or his delegate.
conservation significant fauna	Includes, but not limited to: <i>Leipoa ocellata</i> (malleefowl)
conservation significant flora and vegetation	Includes (but not limited to): <i>Tetratheca paynterae</i> ssp. <i>paynterae</i> (Rare Flora) <i>Ricinocarpus brevis</i> (Rare Flora) <i>Calytrix viscida</i> (Priority 1) <i>Baeckea ochropetala</i> (Priority 1)
DMP	Department of Mines and Petroleum
EPA	Environmental Protection Authority
EP Act	<i>Environmental Protection Act 1986</i>
ground disturbing activity	Excludes activities for the collection of seeds and plant material, and environmental monitoring
Mine, or mining	Has the same meaning as in the <i>Mining Act 1978</i> (WA).
Parks and Wildlife	Department of Parks and Wildlife

**YILGARN OPERATIONS – WINDARLING RANGE, MT JACKSON RANGE AND
DECEPTION DEPOSIT – SHIRES OF YILGARN AND MENZIES**

Coordinates that define the Proposal Development Envelope

Coordinates defining the mine, supporting infrastructure and haul road Development Envelope as shown in Figures 1 to 4 of the Ministerial Statement are held by the Office of the EPA, dated 4 June 2014.

Notes

The following notes are provided for information and do not form a part of the implementation conditions of the Statement:

- The proponent for the time being nominated by the Minister for Environment under section 38(6) of the *Environmental Protection Act 1986* is responsible for the implementation of the proposal unless and until that nomination has been revoked and another person is nominated.
- If the person nominated by the Minister, ceases to have responsibility for the proposal, that person is required to provide written notice to the Environmental Protection Authority of its intention to relinquish responsibility for the proposal and the name of the person to whom responsibility for the proposal will pass or has passed. The Minister for Environment may revoke a nomination made under section 38(6) of the *Environmental Protection Act 1986* and nominate another person.
- To initiate a change of proponent, the nominated proponent and proposed proponent are required to complete and submit *Post Assessment Form 1 – Application to Change Nominated Proponent*.
- The General Manager of the Office of the Environmental Protection Authority was the Chief Executive Officer of the Department of the Public Service of the State responsible for the administration of section 48 of the *Environmental Protection Act 1986* at the time the Statement was signed by the Minister for Environment.

Attachment 1 to Ministerial Statement 982

Change to proposal under s45C of the *Environmental Protection Act 1986*

This Attachment replaces Schedule 1 of Ministerial Statement 982

Proposal: Yilgarn Operations – Windarling Range, Mt Jackson Range and Deception Deposit – Shire of Yilgarn and Shire of Menzies.

Proponent: Cliffs Asia Pacific Iron Ore Pty Ltd.

Changes:

- W1 West pit approval for mining below groundwater table.
- Inclusion of 6 hectare Haulage Road Train Parking Area at Windarling.
- Inclusion of Table 3 - Coordinates defining Haulage Road Train Parking Area at Windarling.

Table 1: Summary of the Proposal

Proposal Title	Yilgarn Operations – Windarling Range, Mt Jackson Range and Deception Deposit – Shire of Yilgarn and Shire of Menzies.
Short Description	The proposal is to develop and operate above and below groundwater table open cut iron ore mine pits, waste rock landforms, ore stockpiles, haul roads and support infrastructure at the W1, W2, W3/5, W4 West and W4 East pits at the Windarling Range, and the J1, J2 and J3 pits at the Mt Jackson Range; and the Deception Deposit; located in the Shire of Yilgarn and the Shire of Menzies.

Table 2: Location and authorised extent of physical and operational elements

Column 1	Column 2	Column 3	Column 4
Element	Location	Authorised Extent	Previously Authorised Extent
Iron ore mine pits	Windarling Range – as defined in Figure 2 and by the spatial coordinates in Table 1 of Schedule 3.	Not more than 233 ha. <ul style="list-style-type: none">• W1 East, W1 West, W2 and W3/5 to be mined below groundwater table.• W2 to be backfilled above groundwater table.• W4 West and W4 East to be mined above the groundwater table.	Not more than 233 ha. <ul style="list-style-type: none">• W1 East, W2 and W3/5 to be mined below groundwater table.• W2 to be backfilled above groundwater table.• W1 West, W4 West and W4 East to be mined above the groundwater table.
	Mt Jackson Range – as defined in Figure 3 and by the spatial coordinates in Table 2 of Schedule 3.	Not more than 133 ha. <ul style="list-style-type: none">• J1 East, J2 and J3 to be mined above groundwater table.• J1 West to be mined below groundwater table.	Not more than 133 ha. <ul style="list-style-type: none">• J1 East, J2 and J3 to be mined above groundwater table.• J1 West to be mined below groundwater table.

Column 1	Column 2	Column 3	Column 4
Element	Location	Authorised Extent	Previously Authorised Extent
	Deception Deposit – as defined in Figure 4 and by the spatial coordinates in Table 3 of Schedule 3.	Not more than 118 ha. • Deception Deposit to be mined below groundwater table.	Not more than 118 ha. • Deception Deposit to be mined below groundwater table.
Waste Rock Landforms	Windarling Range – See Figure 2. Mt Jackson Range – See Figure 3. Deception Deposit – See Figure 4.	Not more than 410 ha. Not more than 263 ha. Not more than 258 ha.	Not more than 410 ha. Not more than 263 ha. Not more than 258 ha.
Associated infrastructure (internal mine roads, ore stockpiles, rehabilitation material stockpiles, airstrip and other mine support facilities)	Windarling Range – See Figure 2. Mt Jackson Range – See Figure 3. Deception Deposit – See Figure 4.	Not more than 210 ha , including 25.1 hectares for Windarling Range Airstrip and 6 ha for Road Train Haulage Parking Area. Not more than 259 ha. Not more than 53 ha.	Not more than 204 ha, including 25.1 hectares for Windarling Range Airstrip. Not more than 259 ha. Not more than 53 ha.
Haul Roads	Figures 1 to 4.	Not more than 609 ha.	Not more than 609 ha.

Note: Text in **bold** in and strikethrough in Table 2 indicates the changes to the proposal.

Figures - all previous Figures in Schedule 1 are replaced by the following:

- Figure 1 Yilgarn Operations - Regional Location and General Layout
- Figure 2 Yilgarn Operations - Windarling Range Mine Operations General Mine Layout
- Figure 3 Yilgarn Operations - Mt Jackson Range Mine Operations General Mine Layout
- Figure 4 Yilgarn Operations - Deception Deposit Mine Operations General Mine Layout

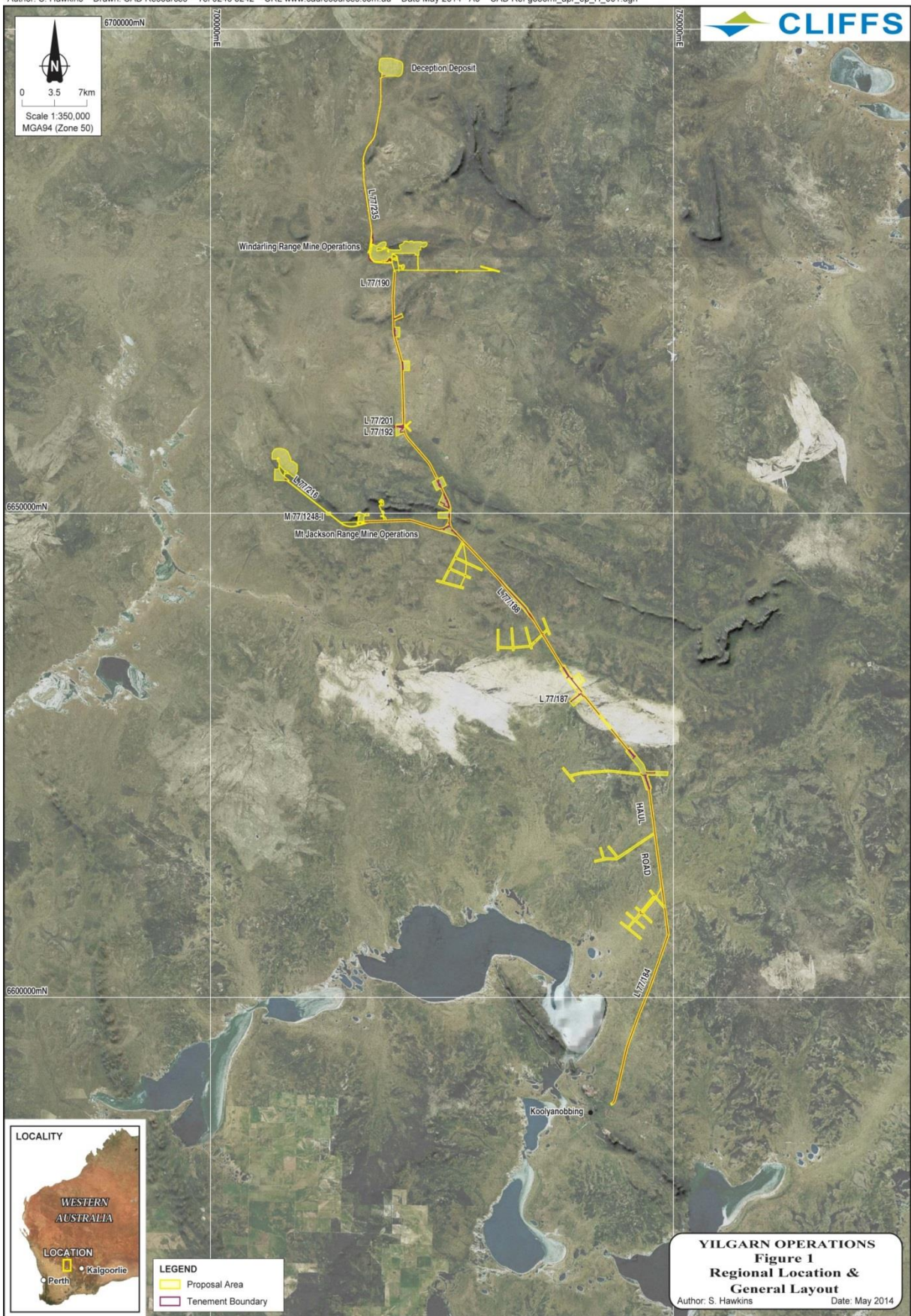
Inclusion of Table 3 (appended)

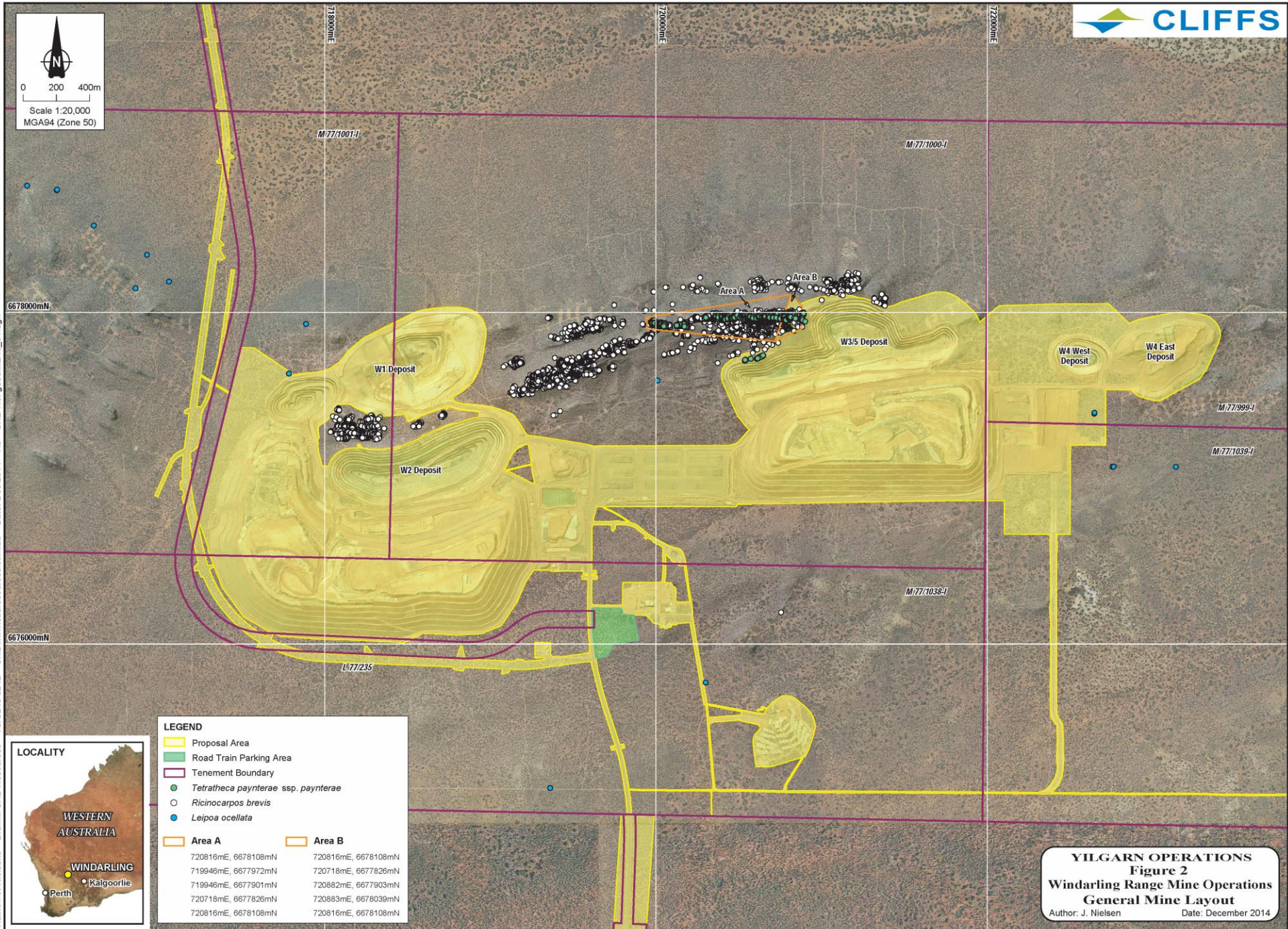
Coordinates defining Haulage Road Train Parking Area at Windarling - Map Grid of Australia (MGA) Zone 50 coordinates

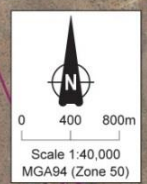
[Signed 17 February 2015]

Dr Paul Vogel
CHAIRMAN
Environmental Protection Authority
under delegated authority

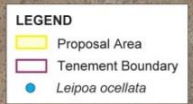
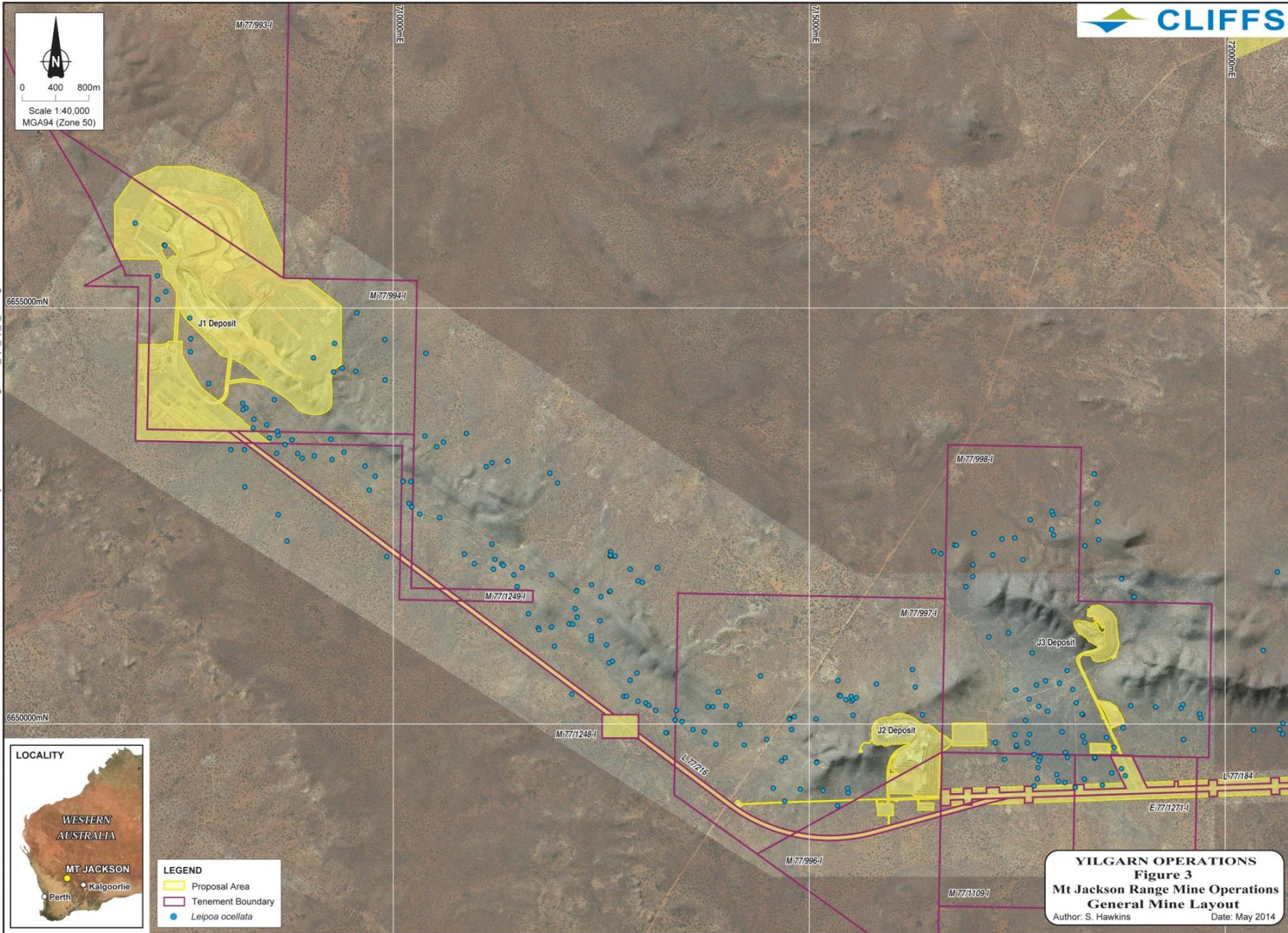
Approval date: _____

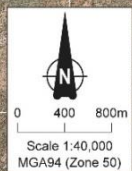




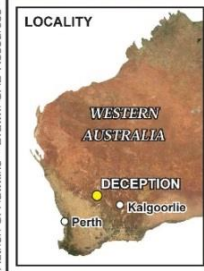


Author: S. Hawkins ~ Drawn: CAD Resources ~ Tel 9246 3242 ~ URL www.cadresources.com.au ~ Date May 2014 ~ A3 ~ CAD Ref g836ml_apr_ep_J_001.dgn





Author: S. Hawkins - Drawn: CAD Resources - Tel 9246 3242 - URL www.cadresources.com.au - Date May 2014 - A3 - CAD Ref g636ml_apr_ep_D_001.dgn



- LEGEND**
- Proposal Area
 - Tenement Boundary
 - Leipoa ocellata*
 - Calyptix viscida*

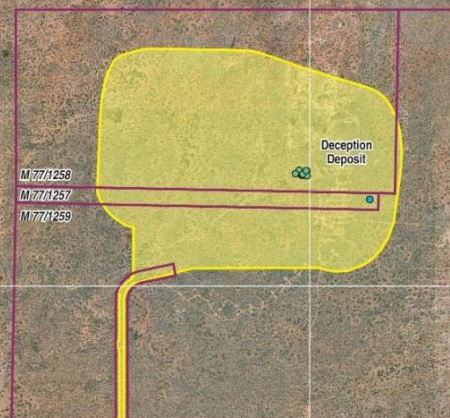


Table 3 – Coordinates defining Haulage Road Train Parking Area at Windarling, Map Grid of Australia (MGA) Zone 50 coordinates

Coordinate Number	Easting	Northing	Coordinate Number	Easting	Northing
1	719635	6675930	13	719759	6676216
2	719632	6675949	14	719790	6676216
3	719620	6676042	15	719793	6676211
4	719614	6676123	16	719797	6676205
5	719612	6676204	17	719799	6676186
6	719613	6676213	18	719803	6676178
7	719614	6676215	19	719866	6676176
8	719622	6676218	20	719895	6676025
9	719691	6676217	21	719741	6675995
10	719694	6676217	22	719710	6675932
11	719729	6676217	23	719699	6675923
12	719744	6676217	24	719638	6675915

Attachment 2 to Ministerial Statement 982

Change to proposal under s45C of the *Environmental Protection Act 1986*

This Attachment replaces Schedule 1 and Attachment 1 of Ministerial Statement 982

Proposal: Yilgarn Operations – Windarling Range, Mt Jackson Range and Deception Deposit – Shire of Yilgarn and Shire of Menzies.

Proponent: Cliffs Asia Pacific Iron Ore Pty Ltd.

Changes:

- Inclusion of the Windarling W7 Pit deposit
- Inclusion of Table 4 - Coordinates defining Windarling W7 Pit and Supporting Infrastructure.

Table 1: Summary of the Proposal

Proposal Title	Yilgarn Operations – Windarling Range, Mt Jackson Range and Deception Deposit – Shire of Yilgarn and Shire of Menzies.
Short Description	The proposal is to develop and operate above and below groundwater table open cut iron ore mine pits, waste rock landforms, ore stockpiles, haul roads and support infrastructure at the W1, W2, W3/5, W4 West, W4 East and W7 Pits at the Windarling Range; the J1, J2 and J3 Pits at the Mt Jackson Range, and the Deception Deposit; located in the Shire of Yilgarn and the Shire of Menzies.

Table 2: Location and authorised extent of physical and operational elements

Column 1 Element	Column 2 Location	Column 3 Authorised Extent	Column 4 Previously Authorised Extent
Iron ore mine pits	Windarling Range – as defined in Figure 2 and by the spatial coordinates in Table 3, Table 4 and Schedule 3.	Not more than 248 ha. <ul style="list-style-type: none">• W1 East, W1 West, W2 and W3/5 and W7 to be mined below groundwater table.• W2 to be backfilled above groundwater table.• W4 West and W4 East to be mined above the groundwater table.	Not more than 233 ha. <ul style="list-style-type: none">• W1 East, W1 West, W2 and W3/5 to be mined below groundwater table.• W2 to be backfilled above groundwater table.• W4 West and W4 East to be mined above the groundwater table.
	Mt Jackson Range – as defined in Figure 3 and by the spatial coordinates in Schedule 3.	<ul style="list-style-type: none">• Not more than 133 ha.• J1 East, J2 and J3 to be mined above groundwater table.• J1 West to be mined below groundwater table.	Not more than 133 ha. <ul style="list-style-type: none">• J1 East, J2 and J3 to be mined above groundwater table.• J1 West to be mined below groundwater table.

Column 1 Element	Column 2 Location	Column 3 Authorised Extent	Column 4 Previously Authorised Extent
	Deception Deposit – as defined in Figure 4 and by the spatial coordinates in Schedule 3.	Not more than 118 ha. • Deception Deposit to be mined below groundwater table.	Not more than 118 ha. • Deception Deposit to be mined below groundwater table.
Waste Rock Landforms	Windarling Range – See Figure 2. Mt Jackson Range – See Figure 3. Deception Deposit – See Figure 4.	Not more than 433 ha . Not more than 263 ha. Not more than 258 ha.	Not more than 410 ha. Not more than 263 ha. Not more than 258 ha.
Associated infrastructure (internal mine roads, ore stockpiles, rehabilitation material stockpiles, airstrip and other mine support facilities)	Windarling Range – See Figure 2. Mt Jackson Range – See Figure 3. Deception Deposit – See Figure 4.	Not more than 229 ha , including 25.1 hectares for Windarling Range Airstrip and 6 ha for Road Train Haulage Parking Area. Not more than 259 ha. Not more than 53 ha.	Not more than 210 ha, including 25.1 hectares for Windarling Range Airstrip and 6 ha for Road Train Haulage Parking Area. Not more than 259 ha. Not more than 53 ha.
Haul Roads	Figures 1 to 4.	Not more than 609 ha.	Not more than 609 ha.

Note: Text in **bold** in Table 2 indicates the changes to the proposal.

Figures - all previous Figures in Attachment 1 are replaced by the following:

- Figure 1 Yilgarn Operations - Regional Location and General Layout
- Figure 2 Yilgarn Operations - Windarling Range Mine Operations General Mine Layout
- Figure 3 Yilgarn Operations - Mt Jackson Range Mine Operations General Mine Layout
- Figure 4 Yilgarn Operations - Deception Deposit Mine Operations General Mine Layout

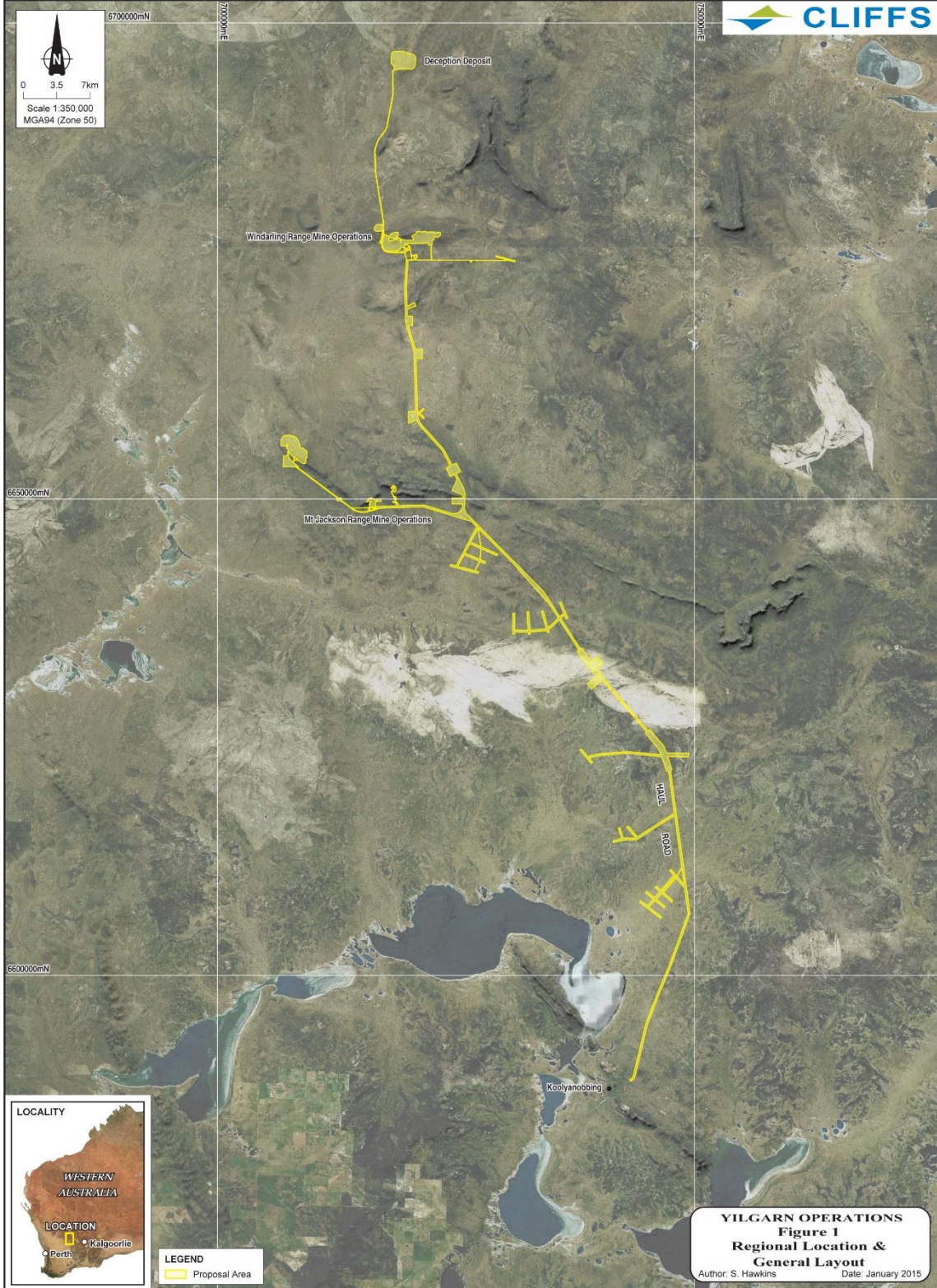
Inclusion of Table 4 (appended)

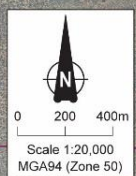
Coordinates defining Windarling W7 Pit and Supporting Infrastructure - Map Grid of Australia (MGA) Zone 50 coordinates

[Signed 27 November 2015]

Dr Tom Hatton
CHAIRMAN
Environmental Protection Authority
under delegated authority

Approval date: _____

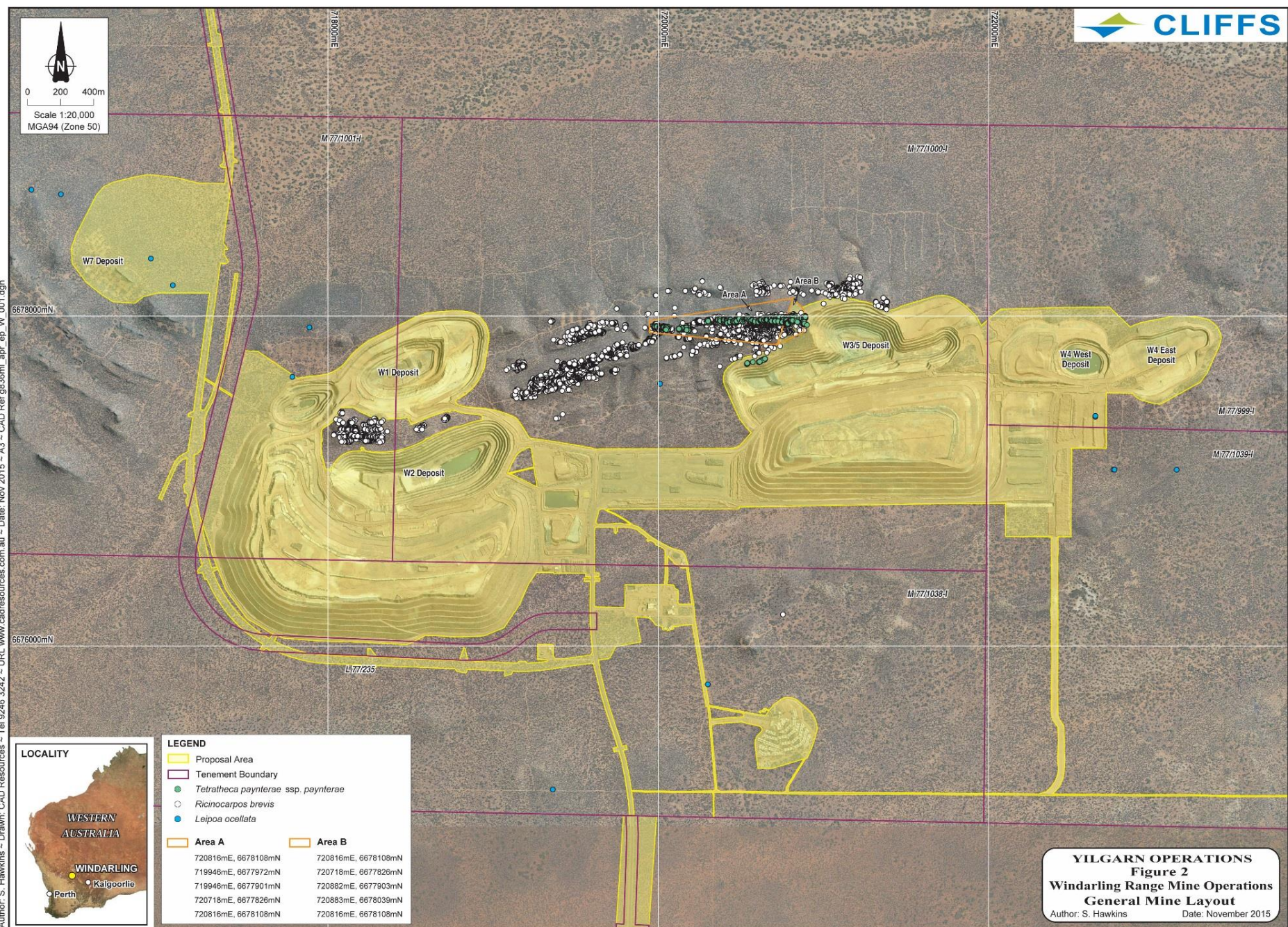


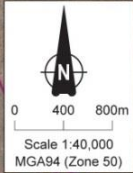


Author: S. Hawkins - Drawn: CAD Resources - Tel 9246 3242 - URL: www.cadresources.com.au - Date: Nov 2015 - A3 - CAD Ref g836ml_apr_ep_w_001.dgn



LEGEND	
	Proposal Area
	Tenement Boundary
	<i>Tetratheca paynterae</i> ssp. <i>paynterae</i>
	<i>Ricinocarpus brevis</i>
	<i>Leipoa ocellata</i>
	Area A
	Area B
720816mE, 6678108mN	720816mE, 6678108mN
719946mE, 6677972mN	720718mE, 6677826mN
719946mE, 6677901mN	720882mE, 6677903mN
720718mE, 6677826mN	720883mE, 6678039mN
720816mE, 6677826mN	720816mE, 6678108mN

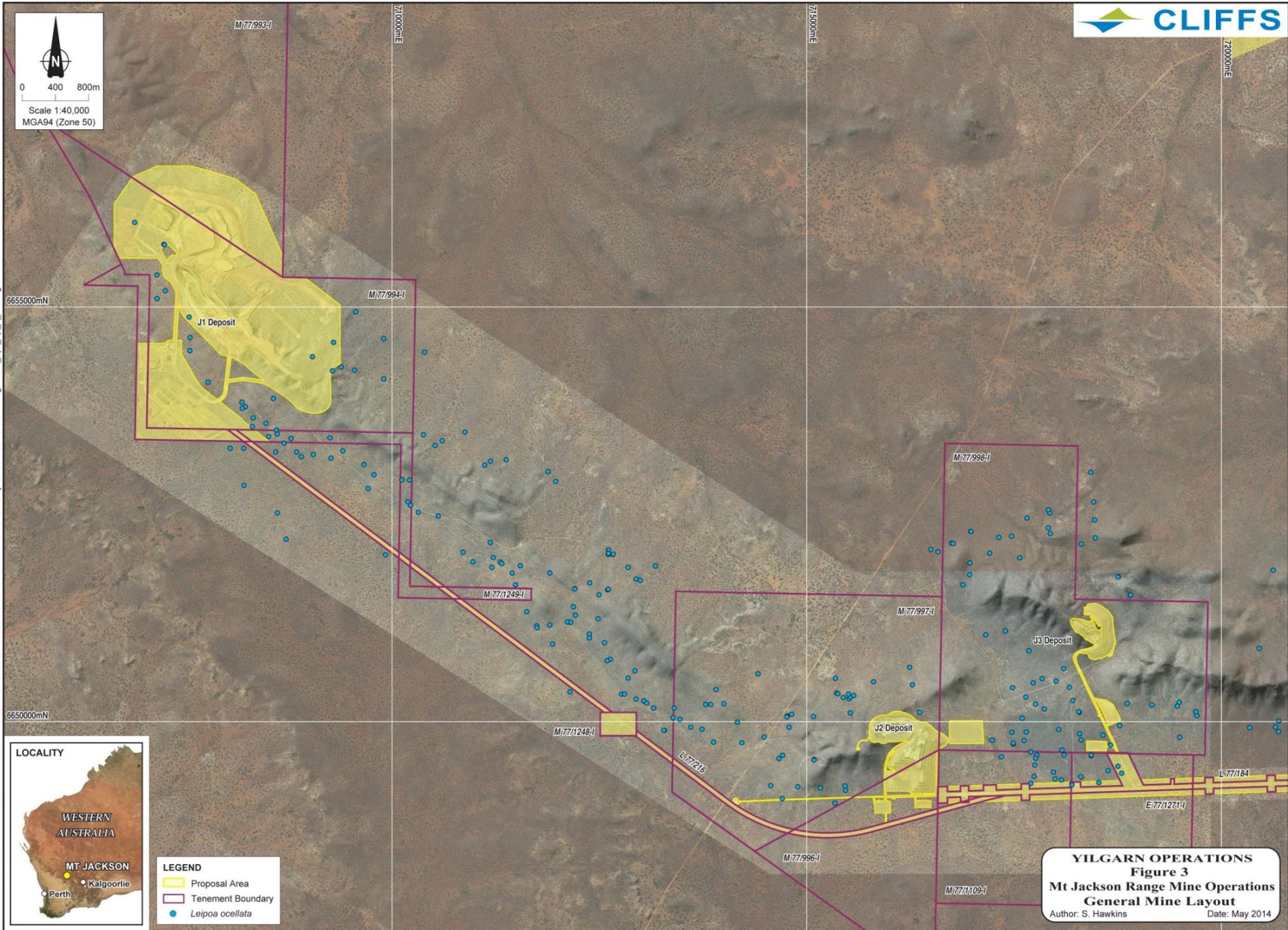




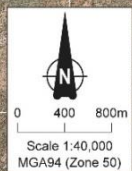
Author: S. Hawkins ~ Drawn: CAD Resources ~ Tel 9246 3242 ~ URL www.cadresources.com.au ~ Date May 2014 ~ A3 ~ CAD Ref g36ml_apr_ep_j_001.dgn



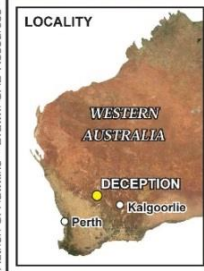
- LEGEND**
- Proposal Area
 - Tenement Boundary
 - Leipoa ocellata*



YILGARN OPERATIONS
Figure 3
Mt Jackson Range Mine Operations
General Mine Layout
 Author: S. Hawkins Date: May 2014



Author: S. Hawkins - Drawn: CAD Resources - Tel 9246 3242 - URL www.cadresources.com.au - Date May 2014 - A3 - CAD Ref g636ml_apr_ep_D_001.dgn



- LEGEND**
- Proposal Area
 - Tenement Boundary
 - Leipoa ocellata*
 - Calyptix viscida*

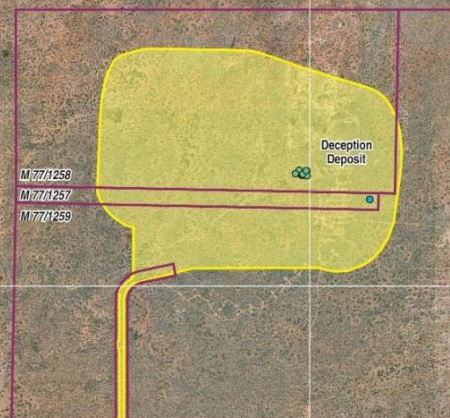


Table 3 – Coordinates defining Haulage Road Train Parking Area at Windarling, Map Grid of Australia (MGA) Zone 50 coordinates

Coordinate Number	Easting	Northing	Coordinate Number	Easting	Northing
1	719635	6675930	13	719759	6676216
2	719632	6675949	14	719790	6676216
3	719620	6676042	15	719793	6676211
4	719614	6676123	16	719797	6676205
5	719612	6676204	17	719799	6676186
6	719613	6676213	18	719803	6676178
7	719614	6676215	19	719866	6676176
8	719622	6676218	20	719895	6676025
9	719691	6676217	21	719741	6675995
10	719694	6676217	22	719710	6675932
11	719729	6676217	23	719699	6675923
12	719744	6676217	24	719638	6675915

Table 4 – Coordinates defining Windarling W7 Pit and Supporting Infrastructure, Map Grid of Australia (MGA) Zone 50 coordinates

Coordinate Number	Easting	Northing	Coordinate Number	Easting	Northing
1	716882	6678118	20	717374	6678803
2	716831	6678078	21	717372	6678790
3	716697	6678087	22	717355	6678668
4	716625	6678133	23	717324	6678440
5	716534	6678205	24	717321	6678419
6	716451	6678319	25	717314	6678415
7	716444	6678407	26	717304	6678409
8	716474	6678493	27	717302	6678398
9	716501	6678546	28	717299	6678372
10	716598	6678736	29	717302	6678368
11	716642	6678785	30	717312	6678355
12	716694	6678809	31	717311	6678348
13	716734	6678820	32	717288	6678176
14	716831	6678843	33	717284	6678151
15	716900	6678856	34	717283	6678140
16	716927	6678857	35	717211	6678140
17	717078	6678840	36	717132	6678140
18	717189	6678812	37	717048	6678140
19	717214	6678806	38	716967	6678140