



**STATEMENT TO AMEND CONDITIONS APPLYING TO A PROPOSAL  
(PURSUANT TO THE PROVISIONS OF SECTION 46 OF THE  
ENVIRONMENTAL PROTECTION ACT 1986)**

**PROPOSAL:** HEAVY MINERAL SANDS MINE, BEENUP,  
SHIRE OF AUGUSTA - MARGARET RIVER  
(312 / 986)

**CURRENT PROPONENT:** BHP TITANIUM MINERALS PTY LTD

**CONDITIONS SET ON:** 24 MAY 1991

The implementation of this proposal is now subject to the following conditions which replace all previous conditions:

**1 Proponent Commitments**

The proponent has made a number of environmental management commitments in order to protect the environment.

- 1-1 In implementing the proposal (including the documented modifications of September 1995), the proponent shall fulfil the relevant environmental management commitments made in the document "Beenup Titanium Minerals Project: Proposal to Extend Approved Mining Area" (September 1995) and subsequently, as reported on in Environmental Protection Authority Bulletin 815; in the Environmental Review and Management Programme (March 1990) and subsequently, as published in Environmental Protection Authority Bulletin 483 (Appendix B), and in response to issues raised following public submissions; provided that the commitments are not inconsistent with the conditions or procedures contained in this statement.

A consolidated list of environmental management commitments was published in Environmental Protection Authority Bulletin 815 (Appendix 5) and a copy is attached.

**2 Implementation**

Changes to the proposal which are not substantial may be carried out with the approval of the Minister for the Environment.

- 2-1 Subject to these conditions, the manner of detailed implementation of the proposal shall conform in substance with that set out in any designs, specifications, plans or other technical material submitted by the proponent to the Environmental Protection Authority with the proposal.

Published on

**22 NOV 1996**

- 2-2 Where, in the course of the detailed implementation referred to in condition 2-1, the proponent seeks to change the designs, specifications, plans or other technical material submitted to the Environmental Protection Authority in any way that the Minister for the Environment determines, on the advice of the Environmental Protection Authority, is not substantial, those changes may be effected.

### **3 Environmental Management Programme**

- 3-1 Prior to any site construction works, including road construction, the proponent shall prepare a comprehensive Environmental Management Programme, to the requirements of the Minister for the Environment on advice of the Environmental Protection Authority. (See also conditions 4, 5 and 6 and proponent commitment 14)
- 3-2 The proponent shall review and if necessary update annually the Environmental Management Programme required by condition 3-1, to the requirements of the Minister for the Environment on advice of the Department of Environmental Protection.
- 3-3 The proponent shall implement the Environmental Management Programme required by conditions 3-1 and 3-2.

### **4 Groundwater**

- 4-1 Prior to excavation of the dredge pond, the proponent shall develop a comprehensive groundwater monitoring programme, as part of the overall Environmental Management Programme required by condition 3, to the requirements of the Minister for the Environment on advice of the Environmental Protection Authority, the Department of Minerals and Energy and the Water and Rivers Commission.
- 4-2 The proponent shall implement the groundwater monitoring programme required by condition 4-1.
- 4-3 The proponent shall not cause/allow any groundwater drawdown attributable to the project to exceed half a metre at the boundary of any neighbouring land.

### **5 Surface Water Management**

- 5-1 Prior to any site construction works, including excavation of the dredge pond, the proponent shall prepare a comprehensive surface water management plan, as part of the overall Environmental Management Programme required by condition 3, to the requirements of the Minister for the Environment on advice of the Environmental Protection Authority, the Water and Rivers Commission and the Department of Agriculture.
- 5-2 The proponent shall implement the surface water management plan required by condition 5-1.

### **6 Pyrite Management**

- 6-1 Within the first year of commencing mining operations, the proponent shall revise the Pyrite Management Programme (as contained in Environmental Management Programme, 1994. BHP Mineral Deposits Pty Ltd; referenced in Bulletin 815) to include a more comprehensive description of the proposed management methods to the requirements of the Environmental Protection Authority on advice from the Department of Environmental Protection.
- 6-2 The proponent shall implement the Environmental Management Programme required by condition 6-1.

## **7 Slimes Handling Operations**

- 7-1 The proponent shall conduct slimes handling operations to the requirements of the Minister for the Environment on advice of the Environmental Protection Authority in consultation with the Department of Minerals and Energy.
- 7-2 Within the three months following completion of one year's operation of the dredge, the proponent shall review and report on slimes handling operations, to the requirements of the Environmental Protection Authority.
- 7-3 In the event that the review of slimes handling operations indicates unsatisfactory performance in the opinion of the Minister for the Environment, the proponent shall develop within a further 12 months a contingency plan for slimes handling, to the requirements of the Minister for the Environment on advice of the Environmental Protection Authority.
- 7-4 The proponent shall implement any contingency plan for slimes handling required by condition 7-3.

## **8 Dieback**

- 8-1 Prior to construction, including road construction, and the obtaining of materials for earthworks, the proponent shall develop comprehensive dieback management prescriptions, in consultation with the Department of Conservation and Land Management, to the requirements of the Minister for the Environment on advice of the Environmental Protection Authority and the Department of Conservation and Land Management.
- 8-2 The proponent shall implement the dieback management prescriptions required by condition 8-1.

## **9 Community Liaison**

- 9-1 Prior to commissioning of the dredge and in order to facilitate monitoring, review and management of the social impact of the project throughout its life, the proponent shall establish formal liaison, monitoring and public reporting processes, to the requirements of the Minister for the Environment on advice of the Environmental Protection Authority.

## **10 Noise (Haulage)**

- 10-1 The proponent shall manage the noise levels associated with the road transport for product haulage to the requirements of the Minister for the Environment.
- 10-2 The proponent shall periodically review the noise levels associated with product haulage operations at appropriate locations along the road route, to the requirements of the Minister for the Environment on advice of the Department of Environmental Protection.

The initial review and reporting shall be undertaken between 12 and 15 months after commencement of product haulage operations.

## **11 Rehabilitation**

- 11-1 Within one year following the commencement of productive mining, the proponent shall develop a rolling rehabilitation plan (including the decommissioning phase), to the requirements of the Minister for the Environment on advice of the Environmental Protection Authority, the Department of Minerals and Energy, the Department of Agriculture and the Department of Conservation and Land Management.
- 11-2 The proponent shall review and if necessary update annually the rolling rehabilitation plan required by condition 11-1, and shall make it publicly available.
- 11-3 The proponent shall implement the rolling rehabilitation plan required by conditions 11-1 and 11-2.

## **12 Decommissioning**

- 12-1 The proponent shall satisfactorily decommission the project, remove the plant and installations, and achieve the final rehabilitation of the site and its environs.
- 12-2 At least six months prior to decommissioning, the proponent shall prepare a decommissioning and final rehabilitation plan.
- 12-3 The proponent shall implement the plan required by condition 12-2.

## **13 Proponent**

These conditions legally apply to the nominated proponent.

- 13-1 No transfer of ownership, control or management of the project which would give rise to a need for the replacement of the proponent shall take place until the Minister for the Environment has advised the proponent that approval has been given for the nomination of a replacement proponent. Any request for the exercise of that power of the Minister shall be accompanied by a copy of this statement endorsed with an undertaking by the proposed replacement proponent to carry out the project in accordance with the conditions and procedures set out in the statement.

## **14 Time Limit on Approval**

The environmental approval for the proposal is limited.

- 14-1 If the proponent has not substantially commenced the project within two years of the date of this statement, then the approval to implement the proposal as granted in the statement of 24 May 1991 shall lapse and be void. The Minister for the Environment shall determine any question as to whether the project has been substantially commenced.

Any application to extend the period of two years referred to in this condition shall be made before the expiration of that period to the Minister for the Environment.

Where the proponent demonstrates to the requirements of the Minister for the Environment on advice of the Department of Environmental Protection that the environmental parameters of the proposal have not changed significantly, then the Minister may grant an extension not exceeding five years.

## **15 Performance Reviews**

- 15-1 Following approval of the proposal, the proponent shall carry out a performance review at the end of two years of mining operations, at the end of five years of mining operations and at five yearly intervals thereafter.

These reports shall be publicly available.

The performance reviews shall include but not be limited to:

- 1 a description of the development of the mine;
- 2 details of operation of the mine and issues arising from and variations to its operation;  
and
- 3 monitoring results,

to the requirements of the Environmental Protection Authority on advice from the Department of Environmental Protection.

The environmental objectives may be changed by the Environmental Protection Authority following each review.

## **16 Compliance Auditing**

To help determine environmental performance and compliance with the conditions, periodic reports on the implementation of the proposal are required.

- 16-1 The proponent shall submit periodic Performance and Compliance Reports, in accordance with an audit programme prepared by the Department of Environmental Protection in consultation with the proponent.

### **Procedure**

- 1 Unless otherwise specified, the Department of Environmental Protection is responsible for assessing compliance with the conditions contained in this statement and for issuing formal clearance of conditions.
- 2 Where compliance with any condition is in dispute, the matter will be determined by the Minister for the Environment.

### **Note**

- 1 The proponent is required to apply for a Works Approval and Licence for this project under the provisions of Part V of the Environmental Protection Act.
- 2 There is no condition in this statement equivalent to condition 9 in the statement of 24 May 1991 on noise levels at nearby residences.

Hon Peter Foss QC MLC  
MINISTER FOR THE ENVIRONMENT

11 NOV 1996

**Proponent's Consolidated Environmental Management  
Commitments**

April 1996

**HEAVY MINERAL SANDS MINE, BEENUP  
SHIRE OF AUGUSTA - MARGARET RIVER  
(312 / 986)**

**BHP TITANIUM MINERALS PTY LTD**

## SUMMARY OF CONSOLIDATED ENVIRONMENTAL MANAGEMENT COMMITMENTS

A summary of environmental management commitments was provided in the original ERMP (Lewis Environmental Consultants, p'94) and an updated version was presented in the project EMP (MDPL, 1994 p63). These commitments have been consolidated in the following table, together with new commitments that relate to the proposed extension to the mining area. A comment on the status of the existing commitments has been provided.

Please note that the following formatting has been applied:

the original commitment together with additional commitments made in response to public input on the ERMP are presented in normal text;

updates presented in the EMP 1994 are in italics; and

amendments that have been put forward as part of this proposal are bold.

COMMITMENT			COMMITMENT STATUS
Accommodation for Temporary Workforce	1	BHPTM will provide accommodation facilities on site for single persons and married people will be accommodated in Flinders Bay caravan park during the construction phase of the project.	The Flinders Bay caravan park is being utilised, the commitment for an on site facility has been superseded.
	2	BHPTM will provide accommodation for single people in a temporary facility to be located adjacent to the Augusta Hotel during the construction phase of the project.	It was agreed with the Shire and Community, and approved by the Minister in early 1995, that single persons would be accommodated in Augusta at a facility adjacent to the hotel. This facility is now in operation
Environmental Awareness	3	BHPTM will develop an environmental awareness programme to educate its workforce that all personnel working on the project are required to observe environmental guidelines throughout the life of the project.	Ongoing & applies to proposed extension. Construction education programme in place.
Groundwater	4	BHPTM will design the mining operations to avoid substantial drawdown of the watertable.	Complete & applies to proposed extension. Dredge designed to operate from normal groundwater level.
	5	Dredging activities will always remain at least 100m from the National Park boundary to minimise impacts on the hydrology of the National Park.	Ongoing & applies to proposed extension.
	6	<i>BHPTM will maintain the approved groundwater monitoring programme which includes baseline data collection, progressive installation and monitoring of bores ahead of the dredging operations and installation of bores at appropriate locations around the dry mill, so as to ensure compliance with the boundary drawdown limits and to ensure that mining and mineral separation activities do not have any adverse effects on the groundwater environment of the area throughout the life and for an agreed time after decommissioning of the project.</i>	Ongoing & applies to proposed extension.
	7	<i>Groundwater monitoring bores will be monitored for pH, EC and level on a monthly basis and a more comprehensive suite of parameters including nutrients and metals on a six-monthly basis and results reviewed, to allow operational strategies to be modified where necessary to minimise potential impacts on the environment, during and after the project. The results of monitoring will be reported to the DEP annually.</i>	Ongoing & applies to proposed extension.



COMMITMENT			COMMITMENT STATUS
Surface Water	8	BHPTM will temporarily divert existing surface drainage channels around the dredge pond and stabilise them with vegetation, at least twelve months prior to their requirement, to manage surface water runoff from the mining area.	Ongoing and applies to proposed extension.
	9	Silt traps will be constructed on major drainage channels , downstream of the mining operation, in advance of dredging activities.	Ongoing and applies to proposed extension.
	10	Where practical, water from the slimes dam will be decanted and returned to the dredge pond. Providing turbidity is at an acceptable level, excess decant water from the slimes dam will be discharged into existing drainage channels (during the winter wet season).	Superseded BHPTM has developed a new process which combines the fines (slimes) and tailings together and disposes of them subaqueously in the pond.
	11	Monitoring of the water quality of the Blackwood and Scott Rivers and major drainage channels leaving the mining area will continue on a regular basis to assist with the development and ongoing monitoring of the surface water management plan.	Baseline data collection and surface water management plan complete. Continued monitoring ongoing.
	12	<i>BHPTM will develop and implement a surface water management programme to prevent the release of turbid or otherwise unacceptable quality waters from the site; maintain adequate surface flow into neighbouring properties and prevent major long term changes to current drainage patterns during the life of the project.</i>	Ongoing & applies to proposed extension.
	13	<i>BHPTM will implement the approved surface water monitoring programme , comprising a number of regional sites and sites strategically located around the mining operations and will provide results to the DEP on an annual basis, to ensure compliance with commitments relating to surface water management.</i>	Ongoing and applies to proposed extension.
	14	<b>BHPTM will not discharge dredge-pond water off-site</b>	
Surface Water (continued)	15	<b>Approved surface water management and monitoring programmes will be implemented to ensure that only water of acceptable quality is released to the Scott or Blackwood Rivers.</b>	New commitment relating to proposed mining extension.
Fines Management	16	BHPTM will direct fines to settling ponds for drying. A portion of the dried fines will be incorporated into the topsoil destined for pasture areas and the remainder incorporated in the tailings near the surface to effect their disposal during the life of the mine.	Superseded by sublay process. With the sublay process BHPTM retains the flexibility to combine the fines and tailings throughout the returned profile.

COMMITMENT			COMMITMENT STATUS
Minimisation of Disturbance	17	Clearing will be kept to the minimum required for safe and efficient operations and wherever possible, access roads and easements will follow existing tracks to minimise impacts on native vegetation during the life of the project.	Ongoing & applies to proposed extension.
Timber Salvage	18	BHPTM will remove millable timber ahead of clearing and will maximise the salvage of forest products where practicable.	Ongoing & applies to proposed extension.
Aboriginal Artefacts	19	BHPTM will immediately notify the Department of Aboriginal Sites of the Western Australian Museum of any occurrence of Limestone platforms or if any archaeological material is uncovered during the process of earth moving, to minimise potential disturbance of aboriginal artefacts.	Ongoing & applies to proposed extension.
	20	<b>BHPTM will liaise with the appropriate authorities to determine the requirement for archaeological assessment, of areas within the proposed mining extension, not previously surveyed. Where further assessment is required this will be carried out, documented and submitted to the DEP in advance of mining operations.</b>	New commitment relating to proposed mining extension.
Dust Control	21	The generation of dust from areas such as topsoil, tailings, concentrate heaps and haul roads will be controlled as necessary to minimise dust emissions from the mine-site during the life of the project.	Ongoing and applies to proposed extension.
	22	<i>Dust collection and control systems including coverings on conveyors, transfer points and discharge points, flexible connections between granular materials handling systems; skirtings and dust filters will be installed and maintained at the dry mill to contain dust emissions.</i>	Ongoing
Dust Control (continued)	23	<i>A dust monitoring programme will be implemented to monitor the effectiveness of dust control measures, when the project is commissioned. Dust control measures will be modified to rectify any dust control problems identified by monitoring.</i>	Ongoing and applies to proposed extension.
Lighting	24	If lighting causes direct illumination at neighbours residences BHPTM will install appropriate light shields.	Ongoing and applies to proposed extension.
Noise Mitigation	25	If required, to meet the stipulated noise levels, BHPTM will design a series of sound barriers to prevent escape of noise from loading areas.	Ongoing & applies to proposed mining extension.
	26	BHPTM will apply to have the pitch of reversal horns reduced to minimise noise emissions from the site and will avoid, wherever possible, disruptive noise at night during the life of the project.	Ongoing and applies to proposed mining extension.

COMMITMENT			COMMITMENT STATUS
	27	BHPTM will undertake base line noise monitoring and will continue with periodic monitoring during both the construction and operation phases to ensure compliance with the stipulated noise levels.	Baseline monitoring complete. Periodic monitoring ongoing.
	28	<i>BHPTM will manage noise emissions from the mine at residential premises surrounding the proposed mine so as not to exceed the levels stipulated in the Ministerial Conditions of approval for the project, nor cause unacceptable noise due to tonal or impulsive components during the life of the project.</i>	Ongoing and applies to proposed mining extension.
	29	BHPTM will carry out noise assessment studies for the proposed extension to the mining area and develop mitigation measures as required, and to the satisfaction of the DEP, to meet the stipulated noise conditions. This will be completed, documented and submitted to the DEP prior to mining in these areas.	New commitment relating to the proposed mining extension.
	30	BHPTM will implement a noise monitoring programme when the project is commissioned to ensure compliance with the stipulated noise levels at the closest residence to the operations. This programme will be continued for a period of three years and then reviewed in consultation with the DEP.	New commitment applies to approved mining area and proposed extension.
	31	In addition to meeting the stipulated noise levels, BHPTM will respond to the concerns of nearby residents as they arise.	New commitment applies to approved mining area and proposed extension.
Flora, Vegetation and Fauna	32	To protect flora of conservation value, BHPTM will exclude the eastern half of Location 4264 from mining. <i>A management programme for the area will be developed in consultation with CALM.</i>	Ongoing
Flora, Vegetation and Fauna (continued)	33	BHPTM will undertake flora and fauna monitoring at annual intervals and periodic dieback monitoring, in a buffer strip within the National Park, where the Park is contiguous with the mining area, after the commencement of mining.	Ongoing and applies to proposed mining extension.
	34	Flora and fauna surveys of the eastern and northern sections of the Scott National Park will be completed over the period October 1990 to June 1991 and the results will be made available to the public.	Surveys complete, report in preparation.
	35	The Company will provide some trial nest boxes in areas of native revegetation to determine whether these assist in the return of fauna to rehabilitation sites.	Ongoing

COMMITMENT			COMMITMENT STATUS
	36	The Company will provide detailed studies of flora and fauna along the proposed transport route, which crosses CALM land, to CALM prior to the route being finalised.	Complete (transferred responsibility to MRD).
	37	BHPTM will botanically survey all areas of remnant vegetation, ahead of planned mining activities, so that management of areas of conservation significance can be agreed with the relevant regulatory authorities. The results will be submitted to the DEP in advance of mining operations. If required, BHPTM will exclude areas of conservation significance from the mining area.	New commitment relating to proposed mining extension.
	38	BHPTM will comply with the requirements of the Wildlife Conservation Act.	New commitment relates to approved mining area and proposed extension.
	39	BHPTM will carry out botanical monitoring in areas of conservation significance when they are adjacent to mining activities ie National Park, Camping Reserve, Governor Broome Rd and areas containing declared rare flora, to determine the effects of the allowable drawdown on the vegetation in these areas. If the 0.5m drawdown is found to be detrimental BHPTM will modify its practices to reduce the drawdown.	New commitment relates to approved mining area and proposed extension.
	40	BHPTM will assess all areas of significant remnant vegetation, that have not been surveyed previously for fauna, prior to mining. Results and management measures will be submitted to the DEP in advance of mining operations.	New commitment relating to proposed extension.
	41	BHPTM will implement measures, as necessary, to prevent any feral animal population increase due to its operations.	New commitment applies to approved mining area and proposed extension.
Rehabilitation	42	Rehabilitation will be carried out as soon as practicable after mining or land disturbance in accordance with the agreed recommendations of the final land use Work Party and the Community Consultative Group.	Ongoing
	43	Detailed rehabilitation plans will be prepared and submitted to the DEP in advance of the commencement of mining operations and these will be available for public inspection.	Superseded by Ministerial Condition 11 of project approval.

COMMITMENT			COMMITMENT STATUS
	44	BHPTM will liaise with CALM, the Department of Agriculture and research organisations such as the Kings Park Board, as required throughout the life of the project , to ensure the ongoing success and continual improvement of rehabilitation techniques and will cooperate in regeneration trials for Rare and Endangered, Reserve List and other species of flora as appropriate. Members of the public will be kept informed of this programme through the consultative process.	Ongoing and applies to proposed extension.
	45	Topsoil will be removed from the dredge path ahead of mining operations and stored under conditions that will maximise its value in subsequent rehabilitation.	Ongoing & applies to proposed extension.
	46	BHPTM will monitor the progress of rehabilitating areas regularly and will report the results annually to the appropriate regulatory authorities.	Ongoing & applies to proposed extension.
	47	Rehabilitated areas will be contoured to be compatible with surrounding lands.	Ongoing & applies to proposed extension.
	48	<i>BHPTM will develop a comprehensive rehabilitation plan for the project, to the satisfaction of the regulatory authorities, within one year of the commencement of dredging operations.</i>	Ongoing & applies to proposed extension.
	49	<b>Rehabilitation, on land not owned by BHPTM, will be carried out with the input of the landowner and to the satisfaction of the regulatory authorities.</b>	New commitment relating to rehabilitation of land not owned by the Company.
Dieback Management	50	<b>BHPTM will plant native vegetation, in areas adjacent to the National Park, in similar proportions to that which occurred prior to mining, if the landowner is agreeable.</b>	New commitment relating to proposed mining extension. (NB Company has already agreed to plant a buffer against southern boundary of National Park on land that it owns.)
	51	To enable a dieback management plan to be developed, to the satisfaction of CALM and the DEP, and incorporated into the mine management plan, a detailed dieback survey will be carried out over the entire mining area and the Eastern and Northern sections of the National Park, before operations commence.	Complete. A dieback management programme has been developed and is detailed in Appendix F of the EMP.
	52	BHPTM will make the results of surveys and the dieback management plan publicly available via the EPA library , the Shire Library and the Company offices.	Complete

COMMITMENT			COMMITMENT STATUS
	53	Measures to control and contain any dieback in native vegetation areas to be returned after mining, will be studied in the early years of mining, when the rehabilitation will be largely in the form of pastures.	Ongoing, although there are no areas of remnant vegetation within the survey area to date that are completely free of the dieback disease.
	54	To minimise the spread of dieback, vehicles moving from infected to non infected areas will be washed down. Vehicle movements on site will be managed to minimise the requirement for washdown.	Ongoing & applies to proposed mining extension.
	55	Methods for monitoring the presence of the dieback organism in the dredge pond and the drainage channels will be researched. Other parts of the mining area will be monitored for dieback as required, dependent on the results of the dieback survey	Ongoing and applies to proposed mining extension.
	56	<i>Forest hygiene measures will be implemented to prevent export of the disease from the site to uninfected areas and to protect identified rare flora species within the project area.</i>	Ongoing & applies to proposed mining extension.
	57	<i>BHPTM will continue to liaise with CALM in relation to ongoing research that may have application to mine-site dieback management eg the use of phosphonate treatment in the area of declared rare flora that has been excluded from mining.</i>	Ongoing & applies to proposed extension.
	58	<b>BHPTM will assess the dieback status of the proposed mining extension and develop management measures to the satisfaction of CALM and the DEP, before mining operations commence. The results of assessment and management measures will be provided to the DEP and will be publicly available.</b>	New commitment relating to the proposed mining extension.
Environmental Management Programmes	59	A surface water management plan and dieback management plan will be submitted and approved by the EPA. These plans will be available to the public for inspection.	Complete (EMP submitted 1994)
Environmental Management Programmes (continued)	60	<b>Assessment of Locations 4152 (particularly the faunal values of the summer swamp) and 4261 (particularly for declared rare flora) will be carried out, and the results provided to the DEP, in advance of mining operations. If required, BHPTM will exclude these areas from the mining area.</b>	Proposed new commitment relating to proposed mining extension.

COMMITMENT			COMMITMENT STATUS
	61	The project Environmental Management Programme will be progressively updated to incorporate further assessment and management measures relating to noise (commitment 29), vegetation and flora (commitment 37 & 61), dieback (commitment 58), assessment of significant habitats for fauna (commitment 40) and archaeological assessment (commitment 20). Each update of the EMP will be submitted to the DEP in advance of mining operations in any particular area.	New commitment relating to proposed mining extension.
Monitoring	62	Monitoring of groundwater, surface water, flora and vegetation, rehabilitation and dieback will be undertaken and the results reported as appropriate to the Department of Mines, the Department of Conservation and Land Management and the Department of Environmental Protection. The results of monitoring will be reviewed regularly to allow management programmes to be modified as necessary.	Ongoing and applies to proposed extension.
Visual Amenity	63	To minimise impacts on visual amenity, the dry mill and office will be screened from the road by planting of indigenous trees and shrubs, and site buildings will be clad with green colorbond, during the construction phase of the project.	Complete.
Water Supply	64	BHPTM will obtain the dry mill water requirements from the regional Lesueur formation, will maximise recycling of this water, minimise discharge of excess water and construct a silt trap downstream of the settling dam to minimise the impacts of dry mill water usage on local water resources.	Ongoing (proposed extension has no impact on dry mill operations). Silt trap complete
	65	BHPTM will obtain make-up water for the dredge pond from bores into the Lesueur aquifer, as required.	Ongoing and applies to proposed extension
Waste Disposal	66	Sand and other waste products which are removed from the concentrate at the mineral processing plant will be returned to the minesite for disposal.	Ongoing
	67	BHPTM will dispose of garbage and workshop wastes at an approved disposal area within the Shire.	Ongoing
Transport of Mineral Product	68	Mineral product from the dry mill will be transported to Bunbury via the agreed transport route, which will be constructed to comply with the latest Austroad standards and to meet the MRD requirements.	The preferred transport route has been selected and approved. Construction and management of the transport route will be carried out by the Main Roads Department (MRD). This commitment is now the responsibility of the MRD.

COMMITMENT			COMMITMENT STATUS
	69	The Company is willing to reconsider the use of rail if it should ever become viable and competitive.	Ongoing - road under construction
	70	The Company will meet the costs associated with the haulage of its minerals product by reaching agreement with the Shires on the proportion of upgrading, sealing and maintenance levels for all haulage roads.	Ongoing.
	71	Noise levels at the intersection of Scott River Rd and Brockman Highway will be reduced to acceptable levels if necessary by the use of measures which may include the re-alignment of the road intersection and a noise barrier.	Now responsibility of MRD. Road diversion currently under construction.
	72	The Company will transport mineral product to Bunbury 24 hours per day in three shifts, five days per week. No haulage of mineral product is proposed for Saturday or Sunday.	Ongoing
	73	The Company will prepare and implement a dieback management programme for the mineral transport route to the satisfaction of CALM and the EPA.	Now responsibility of MRD - Complete
	74	The Company will ensure that, during transport, mineral product is securely covered by a tarpaulin to prevent spillage en-route.	Ongoing
Audit of Greenhouse gases	75	The Company will reduce the emissions of greenhouse gases to as low as practical, using measures including the use of on board computers to monitor truck performance and maximise efficiency, investigating a halon free fire protection and prevention system for the site and investigating alternative uses for non-millable timber.	Ongoing
	76	<i>Purchase, maintenance and disposal of equipment containing CFC gases will be carried out in accordance with the Environmental Protection (Ozone Protection) Policy 1993.</i>	Ongoing
Employment	77	The proponent will advertise all permanent positions in the local newspaper, in keeping with the policy of employing suitably qualified local residents where possible.	Ongoing
Employment (continued)	78	Electrical and mechanical apprenticeships offered by the proponent will be available for suitable local school leavers.	Ongoing
	79	Where competitive with alternative suppliers, local business activities will be supported.	Ongoing



COMMITMENT			COMMITMENT STATUS
	92	BHPTM personnel currently involved in consultation with the community will continue to be involved through the construction phase and into the operational phase, to maintain continuity of the consultative process.	Ongoing
	93	The Company will provide annual updates on anticipated workforce changes to the Education Department prior to the new academic years to enable the Department to undertake informed planning.	Ongoing

COMMITMENT			COMMITMENT STATUS
	80	The proponent is an equal opportunity employer.	Ongoing
	81	The Company will provide training programmes for plant operators who have no appropriate experience.	Ongoing
	82	The Company will favour local people when employing its permanent workforce.	Ongoing
	83	The Company will provide an induction programme for its construction and permanent workforce to highlight sensitive environmental and local issues.	Ongoing - construction programme in place.
Tourism	84	The potential for tours of the operation will be investigated in conjunction with the A-MR Tourist Bureau. Any funds generated from the tours will be for the benefit of the Bureau or local charities.	Ongoing
Infrastructure	85	The capital cost of infrastructure for the project will be borne by the proponent, in conjunction with other major users of the infrastructure facilities.	Ongoing
	86	Upon obtaining approval for the project, agreement will be reached with the Shire to ensure that the Shire is not financially disadvantaged by the project. A total funding package will be finalised with the Shire to enable them to cater for the incoming population.	Complete - Augusta - Margaret River Shire Infrastructure Agreement.
Workforce	87	Suitably qualified local residents will be employed where possible. This will provide direct interaction between existing residents and employees new to the area.	Ongoing
	88	The proponent will provide the necessary training for plant operators, rather than rely on obtaining personnel who already have the appropriate work skills.	Ongoing
Accommodation	89	Consultation with the Shire and the Beenup Consultative Group will continue to determine means of minimising the impact of the incoming construction and permanent operational workforce on existing housing.	Ongoing
Social Infrastructure	90	The need for additional social facilities to meet current population growth and the increase in population due to the project will be investigated in conjunction with the Shire Council and the Beenup Consultative Group.	Complete - Infrastructure Agreement in place.
Social Infrastructure (continued)	91	It is hoped that the Beenup Consultative Group will play an active role in assisting newcomers to assimilate to their new environment.	Ongoing

## Attachment 1 to Ministerial Statement 434

### Change to proposal approved under section 45C of the *Environmental Protection Act 1986*

---

**Proposal:** Heavy Mineral Sands Mine, Beenup, Shire of Augusta – Margaret River

**Proponent:** BHP Titanium Minerals Pty Ltd

---

**Changes:**

- Reduce the original proposal area from 2900 to 697 ha.

**Table 1: Summary of the Proposal**

Proposal Title	Heavy Mineral Sands Mine, Beenup, Shire of Augusta – Margaret River
Short Description	<b>The proposal is to rehabilitate the Beenup Titanium Minerals Project Area located 17km north-east of Augusta in the Shire of Augusta-Margaret River (Figure 1). The Beenup Rehabilitation Project is located on retained portions of Mining Leases 70/574 and 70/575 (Figure 2).</b>

**Table 2: Location and authorised extent of physical elements**

Element	Location	Authorised Extent
Rehabilitation Area	Figure 2	Total rehabilitation area of no more than 336.18 ha within a <b>697</b> ha project envelope, comprised of: <ul style="list-style-type: none"><li>• Former dredge ponds (now permanent wetlands) – 71.50 ha</li><li>• Mine Development Storage Area – 42.60 ha</li><li>• Trial Mining Areas – 25.46 ha</li><li>• Disturbed areas (decommissioned dams, stockpile areas, general project related disturbance) rehabilitated to pasture, native vegetation and ephemeral wetlands – 196.62 ha</li></ul>
Associated Infrastructure	Figure 2	1 ha

Note: Text in **bold** indicates a change to the proposal.

**Table 3: Abbreviations**

Abbreviation	Term
ha	hectare
km	kilometre

**Figures (attached)**

Figure 1 – Regional Location of Beenup Rehabilitation Project

Figure 2 – Beenup Rehabilitation Project Envelope

[Signed 28 August 2014]

**Dr Paul Vogel**

CHAIRMAN

Environmental Protection Authority  
under delegated authority

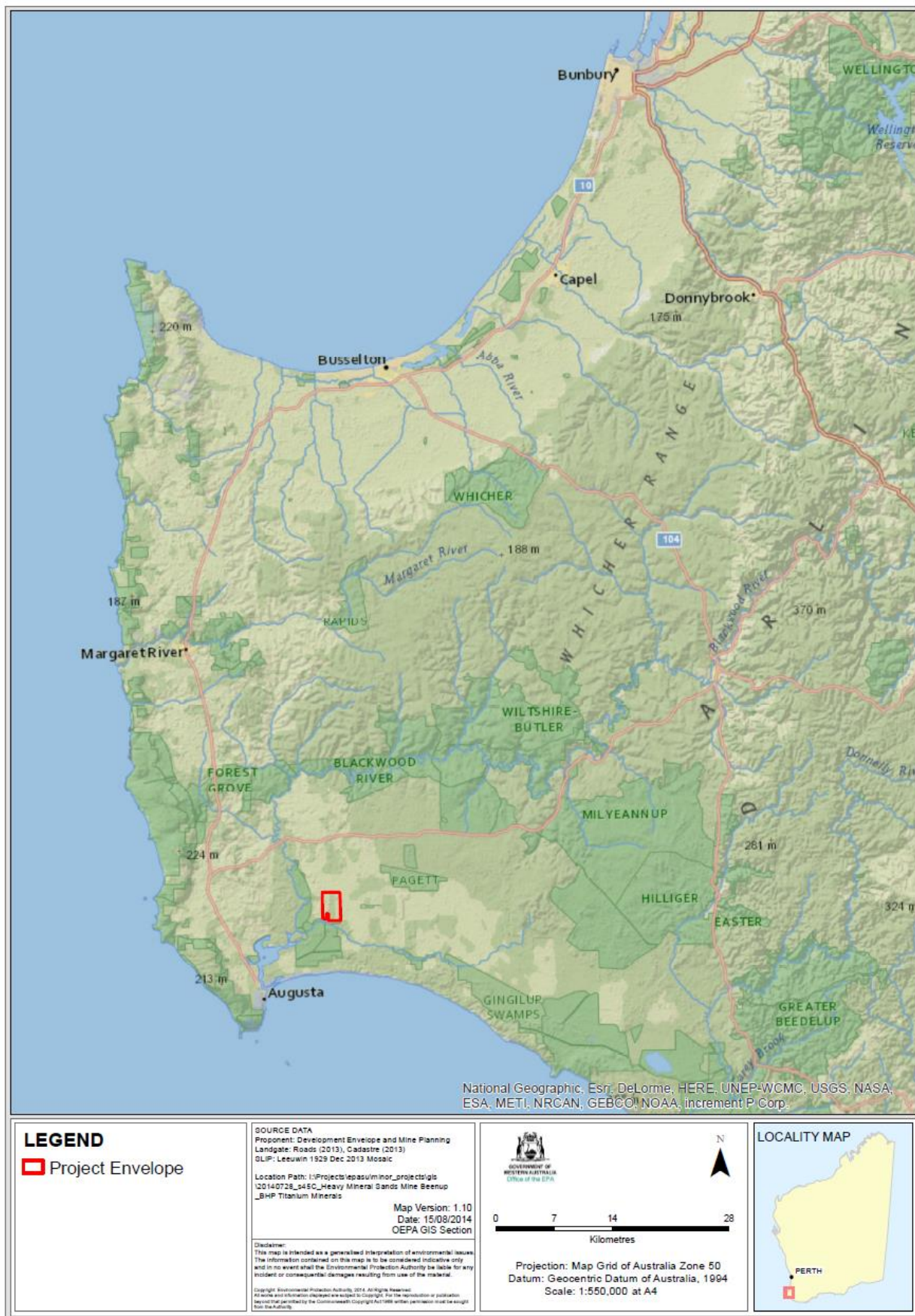


Figure 1 – Regional Location of Beenup Rehabilitation Project



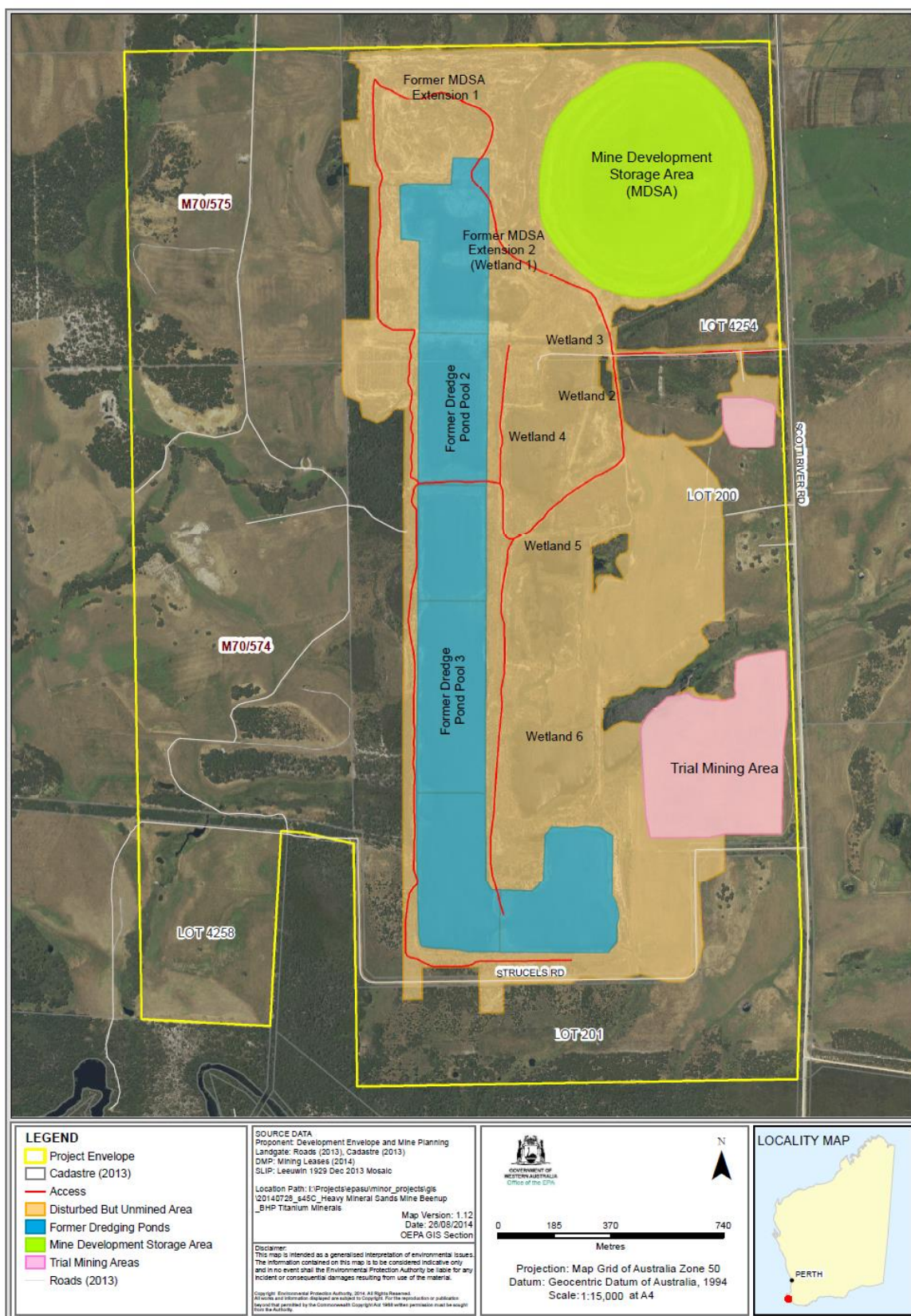


Figure 2 – Beenup Rehabilitation Project Envelope