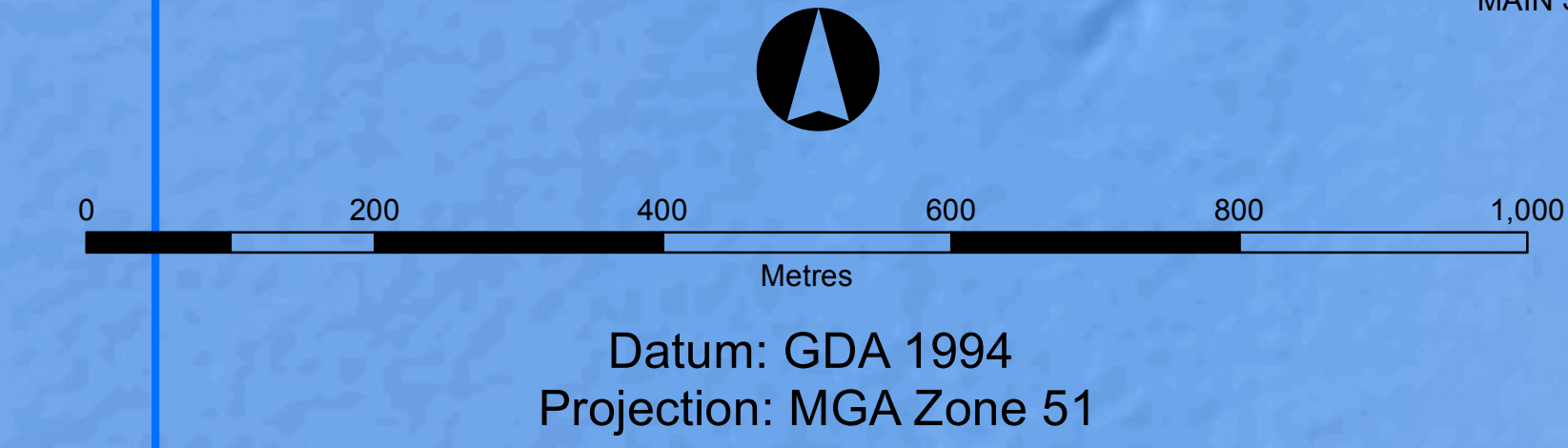
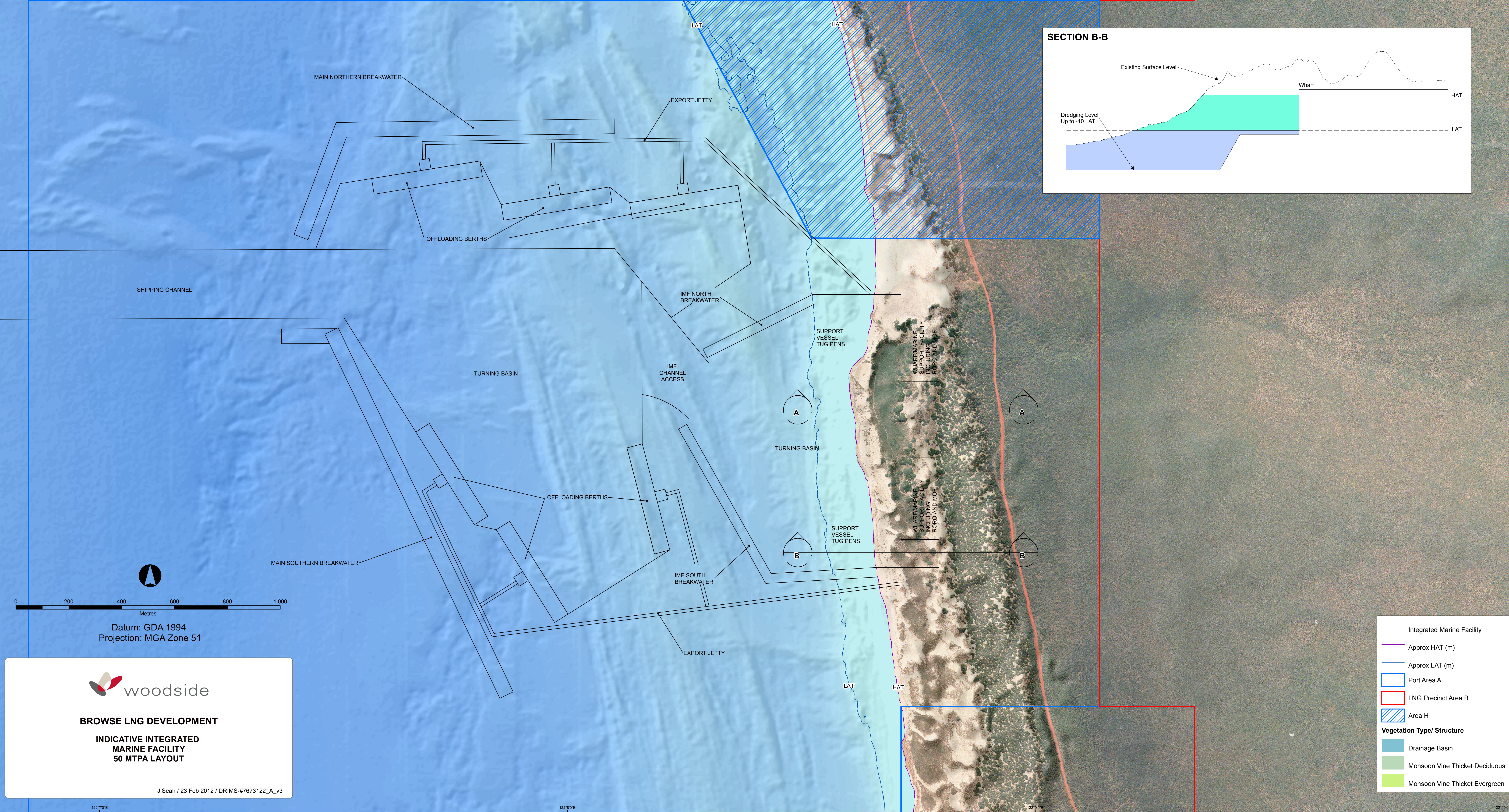
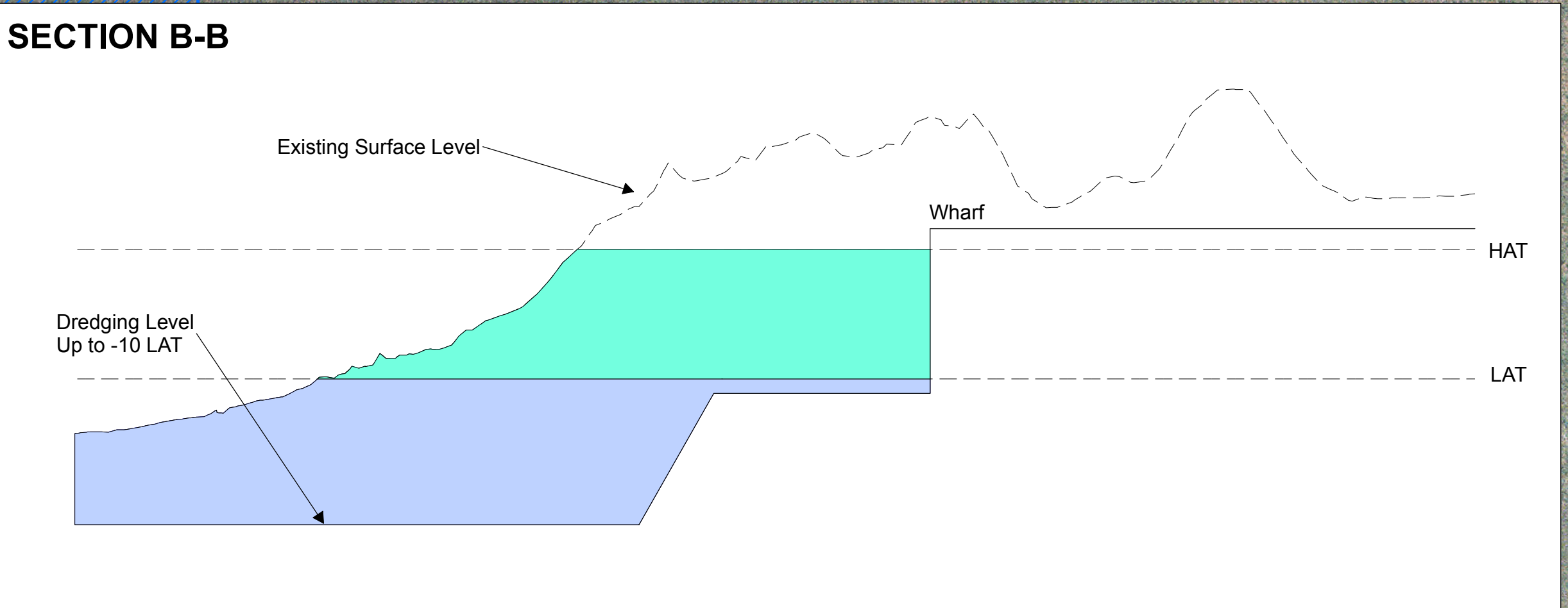
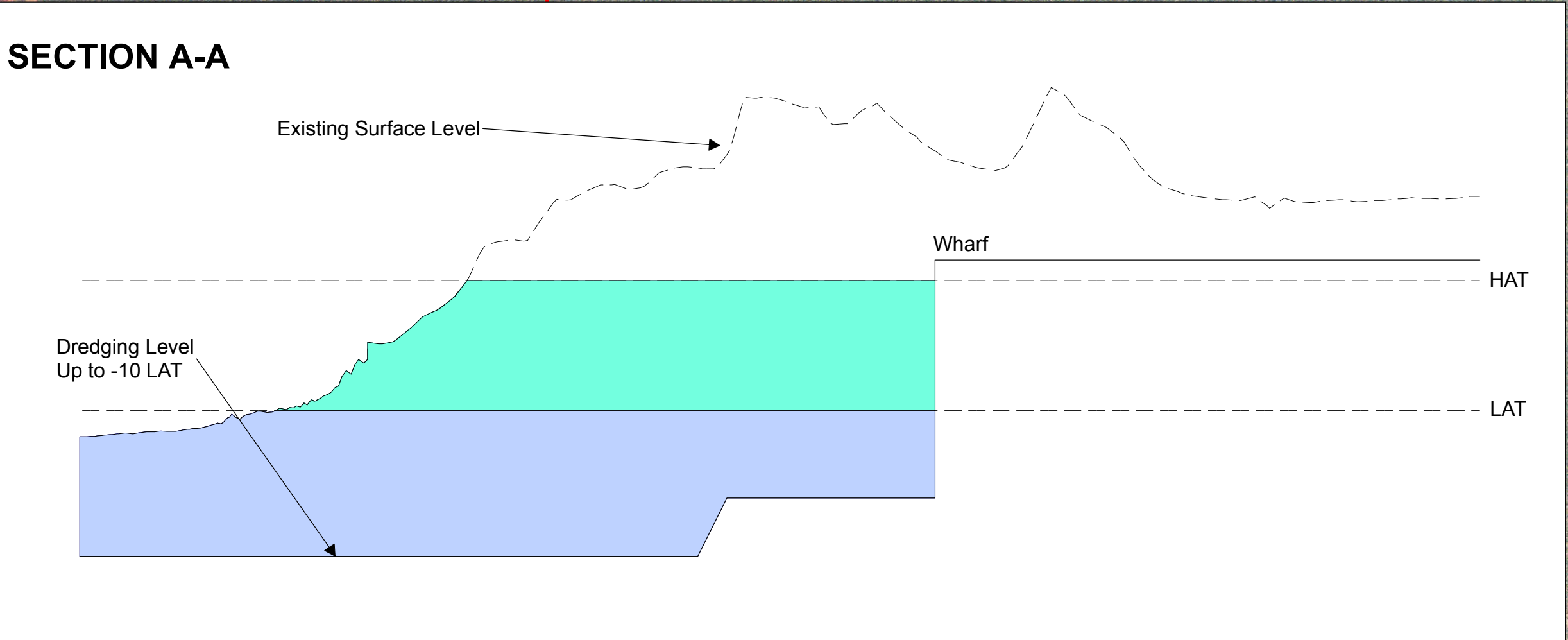


Note: The area designated as "Port Area A" has been altered in the north-eastern corner and differs from the original "Port Area A". This alteration has been requested by DSD (Department of State Development) to allow for an area noted for the presence of dinosaur footprints (Area H). The edge of the area which runs in a north-westerly orientation has been based on where the "Port Area A" boundary intersects the LAT (Lowest Astronomical Tide) - for the purpose of simplicity this boundary edge is a straight line connecting the two intersecting points of the northern boundary and a southern boundary (established by the DSD as 900m south of Port Area A's northern boundary). "Area H" is an area within Woodside's current NOIT (23/02/2012) that is the focus of discussions by the OEPA (Office of the Environmental Protection Authority) and DSD around its excision due to the presence of the aforementioned dinosaur footprints.





BROWSE LNG DEVELOPMENT

**INDICATIVE INTEGRATED
MARINE FACILITY
50 MTPA LAYOUT**

J. Seah / 23 Feb 2012 / DRIMS-#7673122_A_v3

- Integrated Marine Facility
- Approx HAT (m)
- Approx LAT (m)
- Port Area A
- LNG Precinct Area B
- Area H
- Vegetation Type/ Structure**
- Drainage Basin
- Monsoon Vine Thicket Deciduous
- Monsoon Vine Thicket Evergreen