

STATUS OF THIS DOCUMENT

This document has been produced by the Office of the Appeals Convenor as an electronic version of the original Statement for the proposal listed below as signed by the Minister and held by this Office. Whilst every effort is made to ensure its accuracy, no warranty is given as to the accuracy or completeness of this document.

The State of Western Australia and its agents and employees disclaim liability, whether in negligence or otherwise, for any loss or damage resulting from reliance on the accuracy or completeness of this document.

Copyright in this document is reserved to the Crown in right of the State of Western Australia. Reproduction except in accordance with copyright law is prohibited.

Published on: 16 November 2011

Statement No. 879

**STATEMENT THAT A PROPOSAL MAY BE IMPLEMENTED
(PURSUANT TO THE PROVISIONS OF THE
ENVIRONMENTAL PROTECTION ACT 1986)**

GOLD MINE DEVELOPMENTS ON LAKE LEFROY

Proposal: The proposal is to expand existing open-cut and underground gold mining developments within a defined project area on the surface of Lake Lefroy, approximately 20 kilometres south east of Kambalda. The proposal includes the discharge of dewatering to the lake's surface and the construction of associated mining infrastructure (including open pits and waste rock dumps).

The proposal is further documented in schedule 1 of this statement.

Proponent: St Ives Gold Mining Company Pty Limited

Proponent Address: PO Box 359,
KAMBALDA WEST WA 6444

Assessment Number: 1809

Previous Assessment Number: 1250

Report of the Environmental Protection Authority: Report 1411

Previous Report of the Environmental Protection Authority: Report 976

Previous Statement Number: 548 (Published on 13 July 2000)

Appeal Determination: Appeal 90 of 2011

The proposal referred to in the above report of the Environmental Protection Authority may be implemented. The implementation of that proposal is subject to the following conditions and procedures:

1 Proposal Implementation

- 1-1 The proponent shall implement the proposal as documented and described in schedule 1 of this statement subject to the conditions and procedures of this statement.

2 Proponent Nomination and Contact Details

- 2-1 The proponent for the time being nominated by the Minister for Environment under sections 38(6) or 38(7) of the *Environmental Protection Act 1986* is responsible for the implementation of the proposal.
- 2-2 The proponent shall notify the Chief Executive Officer of the Office of the Environmental Protection Authority (CEO) of any change of the name and address of the proponent for the serving of notices or other correspondence within 30 days of such change.

3 Time Limit of Authorisation

- 3-1 The authorisation to implement the proposal to expand existing open-cut and underground gold mining developments within a defined project area on the surface of Lake Lefroy, approximately 20 kilometres south east of Kambalda provided for in this statement shall lapse and be void five years after the date of this statement if the proposal to which this statement relates is not substantially commenced.
- 3-2 The proponent shall provide the CEO with written evidence which demonstrates that the proposal has substantially commenced on or before the expiration of five years from the date of this statement.

4 Compliance Reporting

- 4-1 The proponent shall prepare and maintain a compliance assessment plan to the satisfaction of the CEO.
- 4-2 The proponent shall submit to the CEO the compliance assessment plan required by condition 4-1 at least six months prior to the first compliance report required by condition 4-6, or prior to implementation, whichever is sooner. The compliance assessment plan shall indicate:
1. the frequency of compliance reporting;
 2. the approach and timing of compliance assessments;
 3. the retention of compliance assessments;

4. the method of reporting of potential non-compliances and corrective actions taken;
 5. the table of contents of compliance assessment reports; and
 6. public availability of compliance assessment reports.
- 4-3 The proponent shall assess compliance with conditions in accordance with the compliance assessment plan required by condition 4-1.
- 4-4 The proponent shall retain reports of all compliance assessments described in the compliance assessment plan required by condition 4-1 and shall make those reports available when requested by the CEO.
- 4-5 The proponent shall advise the CEO of any potential non-compliance within seven days of that non-compliance being known.
- 4-6 The proponent shall submit to the CEO the first compliance assessment report by 31st March 2012 (to cover the period 1st July 2010 to 31st December 2011) and then annually by the 31st March each year to cover the previous 12 month calendar year period. The compliance assessment report shall:
1. be endorsed by the proponent's General Manager or a person delegated to sign on the General Manager's behalf;
 2. include a statement as to whether the proponent has complied with the conditions;
 3. identify all potential non-compliances and describe corrective and preventative actions taken;
 4. be made publicly available in accordance with the approved compliance assessment plan; and
 5. indicate any proposed changes to the compliance assessment plan required by condition 4-1.

5 Environmental Monitoring

- 5-1 Prior to ground disturbing activity, the proponent shall prepare and implement a monitoring plan to the satisfaction of the CEO. The plan shall include the monitoring of:
1. Riparian vegetation health at discharge and reference sites;

2. Surface water quality at discharge sites and points throughout the lake including the playas and clay pans adjacent to Lake Lefroy;
 3. Sediment quality at discharge sites, including levels of heavy metals;
 4. Aquatic flora and fauna following a 1:20 year (100 mm in 72 hours) rainfall event or greater;
 5. Terrestrial invertebrate fauna; and
 6. Migratory water bird populations.
- 5-2 The monitoring required under condition 5-1, shall be carried out in such a way that it allows confirmation that the observed impacts from the proposal documented in schedule 1 are not greater than those predicted in the Public Environmental Review for the proposal, which is titled Gold Mining Developments on Lake Lefroy Beyond 2010 (dated 3 December 2010).
- 5-3 The proponent shall submit annually, as part of the compliance plan, the results of the monitoring required by condition 5-1 to the CEO.
- 5-4 The proponent shall make the approved monitoring plan and the results of the monitoring required by condition 5-1 publicly available in a manner approved by the CEO.
- 5-5 Should the monitoring carried out under condition 5-1 indicate that the environmental impacts of the project are greater than those predicted in the Public Environmental Review the proponent will develop and implement a management plan, to the satisfaction of the CEO, that details how the impacts will be reduced or mitigated and any remedial work required.
- 6 Surface Water Discharge**
- 6-1 The proponent shall restrict discharge to the discharge points shown in Figure 3 in Schedule 1 of this Statement.
- 6-2 The proponent shall visually monitor and record the size of the area of inundation of the Lake Lefroy riparian zone following rainfall of 100 mm or greater in any 72 hour period being recorded at two points in the Lake Lefroy catchment as agreed to with the CEO.
- 6-3 Should the area of inundation exceed that predicted in the surface water model presented in the Public Environmental Review the proponent shall:

1. report such findings to the CEO within 7 days of the exceedance being identified;
 2. determine actions in consultation with the Department of Environment and Conservation to be taken to prevent future exceedences and to remediate any impact resulting from the exceedance;
 3. submit actions to be taken to the CEO within 21 days of reporting the exceedance; and
 4. implement actions identified above upon approval of the CEO.
- 6-4 The proponent shall make the results of monitoring required by condition 6-2 publicly available in a manner approved by the CEO.
- 6-5 The proponent shall make the records of the area of inundation monitoring available on request of the CEO.
- 6-6 The proponent shall use the actual area of inundation data gathered under monitoring for condition 6-2 to verify the surface water model presented in the Public Environmental Review within 3 months of the relevant rainfall event.
- 6-7 Should the verification carried out under condition 6-5 show that the model is not accurate the proponent shall recalibrate the surface water model presented in the Public Environmental Review.
- 6-8 On completing any work required under conditions 6-5 and 6-6, the proponent shall provide a report to the CEO detailing the results of the verification and the recalibration and the environmental implications of changes to the model for Lake Lefroy.

Notes

1. Where a condition states “on advice of the Office of the Environmental Protection Authority”, the Office of the Environmental Protection Authority will provide that advice to the proponent.
2. The Office of the Environmental Protection Authority may seek advice from other agencies or organisations, as required, in order to provide its advice to the Department of Environment and Conservation.
3. The Minister for Environment will determine any dispute between the proponent and the Office of the Environmental Protection Authority over the fulfilment of the requirements of the conditions.
4. Mine closure and rehabilitation will be managed by the Department of Mines and Petroleum under the statutory requirements of *Mining Act 1978*.

5. The proponent is required to apply for a Works Approval and Licence for this project under the provisions of Part V of the *Environmental Protection Act 1986*.

[Signed 15 November 2011]

HON BILL MARMION MLA
MINISTER FOR ENVIRONMENT; WATER

The Proposal (Assessment No. 1809)

The proposal is to expand existing open-pit and underground gold mining operations within a defined project area on Lake Lefroy, 20 kilometres south east of Kambalda, and includes dewatering discharge to the lake surface.

The proposal is described in the following document – *Gold Mining Developments on Lake Lefroy – Beyond 2010: Public Environmental Review*, December 2010.

Table 1: Summary of Key Proposal Characteristics

Element	Description
Area of disturbance	Up to 1713 ha (including 1273 ha of existing disturbance)
Area of direct riparian zone disturbance	Up to 90 ha (including 77 ha of existing disturbance)
Height of waste rock dumps	Up to 40 metres
Volume of waste rock used for backfilling	A minimum of approximately 95 million tonnes
Mining method	Open pit using conventional techniques, with some underground mining likely to be conducted at some deposits
Dewatering volume and discharge to Lake Lefroy	Up to 30 Gigalitres per annum whole of lake discharge

Figures

Figure 1 Regional location of mine site

Figure 2 Project footprint and location of key components – mine disturbance

Figure 3 Project footprint and location of key components – dewatering points

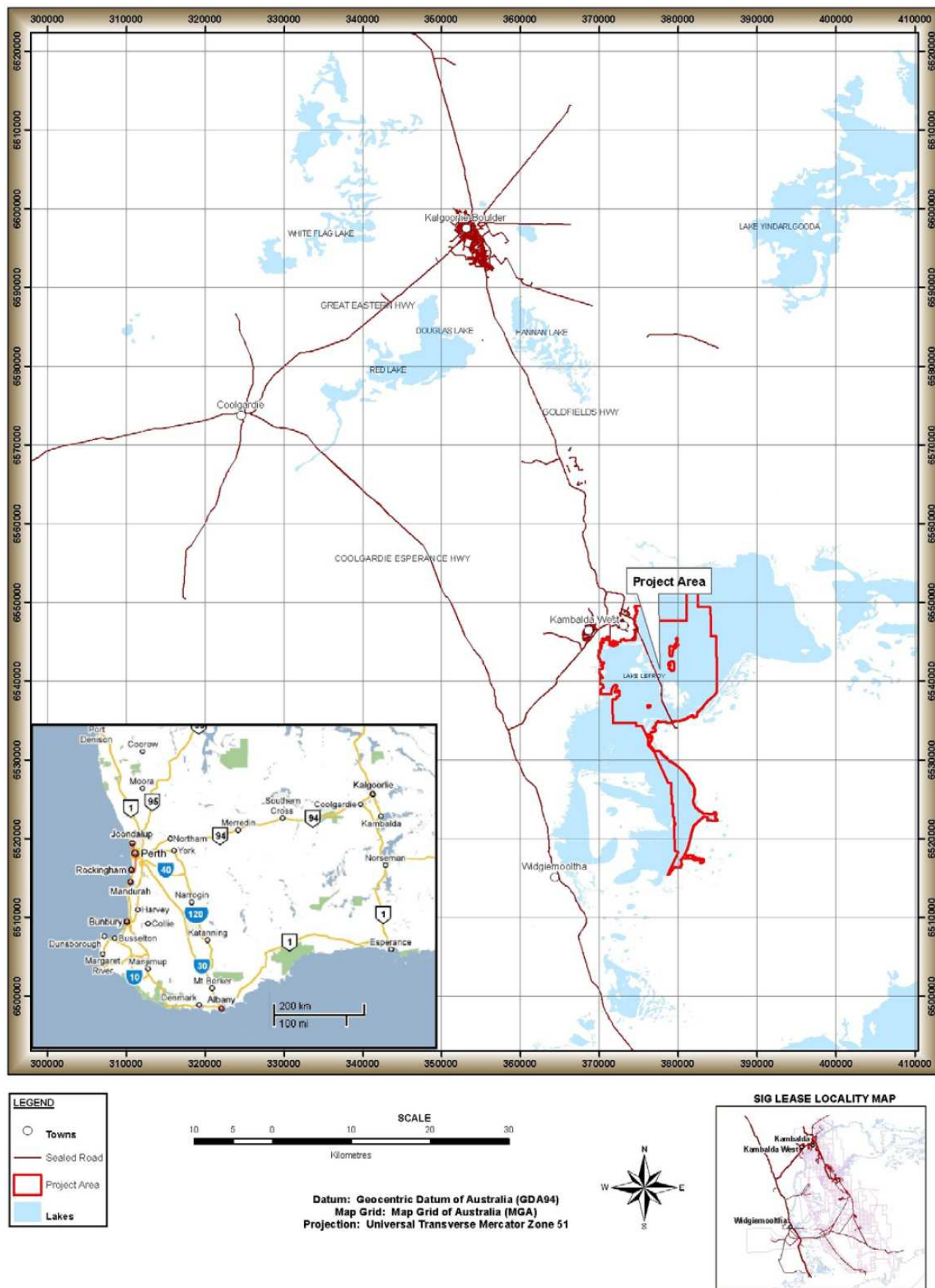


Figure 1 Regional location of mine site

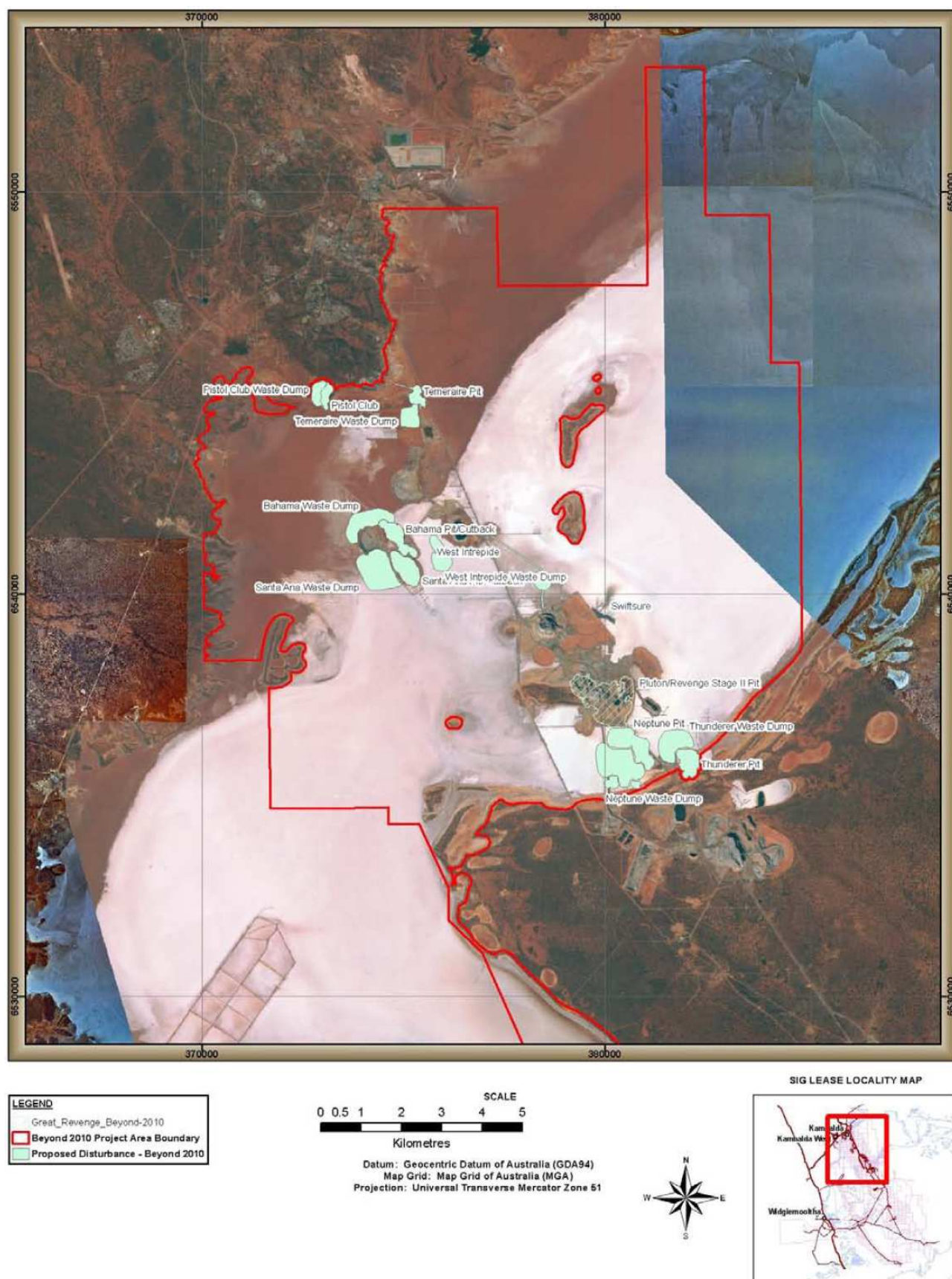


Figure 2 Project footprint and location of key components – mine disturbance

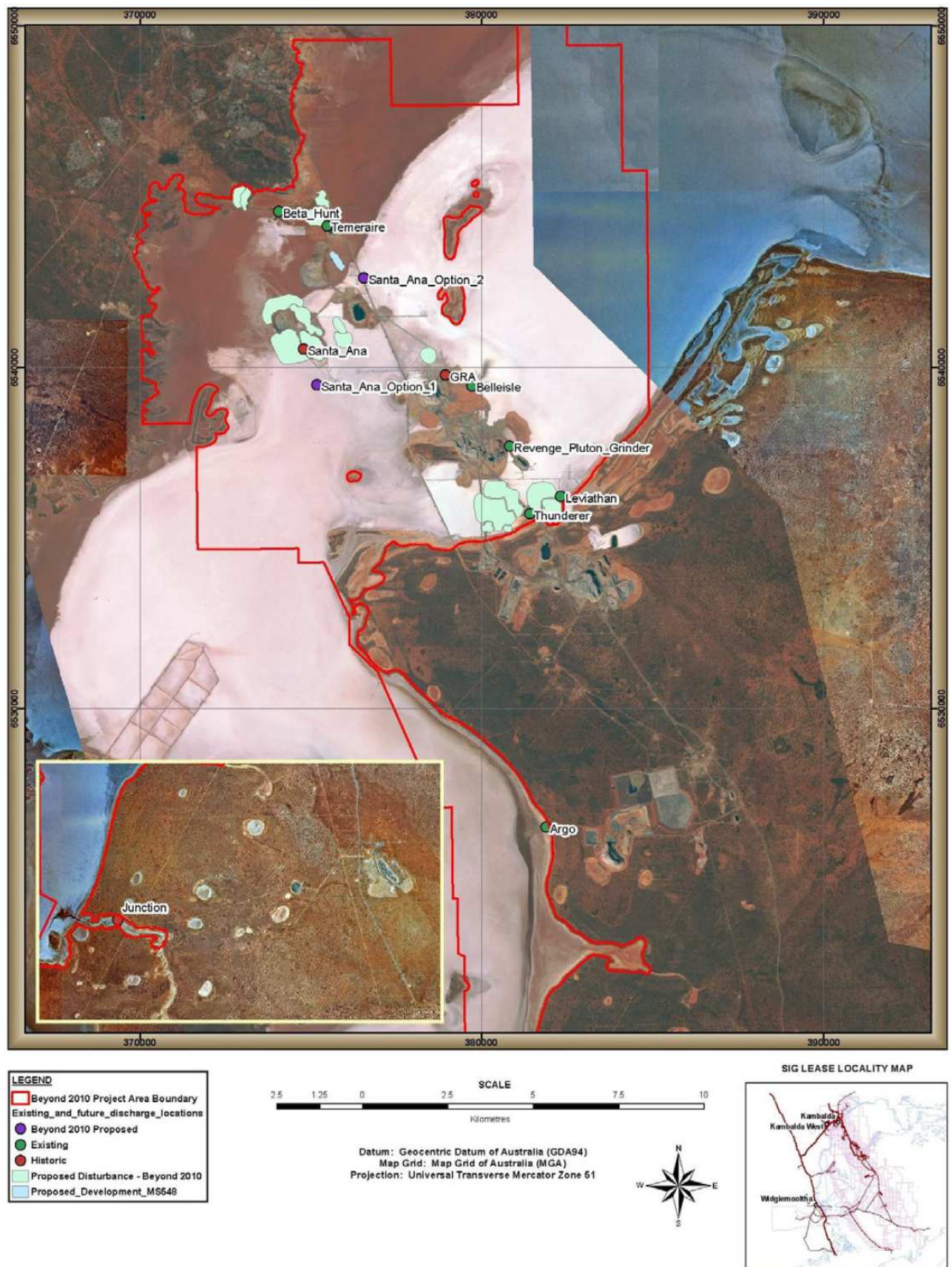


Figure 3 Project footprint and location of key components – dewatering points

Attachment 1 to Ministerial Statement 879

Change to proposal under s45C of the *Environmental Protection Act 1986*

This Attachment replaces Schedule 1 in Ministerial Statement 879, and Figures 1, 2 and 3 in Schedule 1 of Ministerial Statement 879.

Proposal: Gold Mine Developments on Lake Lefroy (Assessment No. 1809)

Proponent: St Ives Gold Mining Company Pty Limited

The Proposal (Assessment No. 1809)

The proposal is to expand existing open-cut and underground gold mining developments within a defined project area on the surface of Lake Lefroy, approximately 20 kilometres south east of Kambalda. The proposal includes the discharge of dewatering to the lake's surface and the construction of associated mining infrastructure (including open pits and waste rock dumps).

Change: - Increase of 348 hectares to the area of disturbance.

Summary Description

A summary of the key proposal characteristics is presented in Table 1.

Table 1 – Summary of Key Proposal Characteristics

<u>Element</u>	<u>Description</u>	<u>Approved change to Description</u>
Area of disturbance	Up to 1713 ha (including 1273 ha of existing disturbance)	Up to 2061 ha (including 1273 ha of existing disturbance).
Area of direct riparian zone disturbance	Up to 90 ha (including 77 ha of existing disturbance)	Up to 90 ha (including 77 ha of existing disturbance)
Height of waste rock dumps	Up to 40 metres	Up to 40 metres
Volume of waste rock used for backfilling	A minimum of approximately 95 million tonnes	A minimum of approximately 95 million tonnes
Mining method	Open pit using conventional techniques, with some underground mining likely to be conducted at some deposits	Open pit using conventional techniques, with some underground mining likely to be conducted at some deposits
Dewatering volume and discharge to Lake Lefroy	Up to 30 Gigalitres per annum whole of lake discharge	Up to 30 Gigalitres per annum whole of lake discharge

Note: Text in **bold** in the Key Proposal Characteristics indicates change/s to the proposal.

List of Replacement Figures:

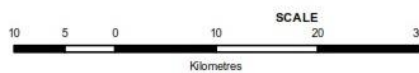
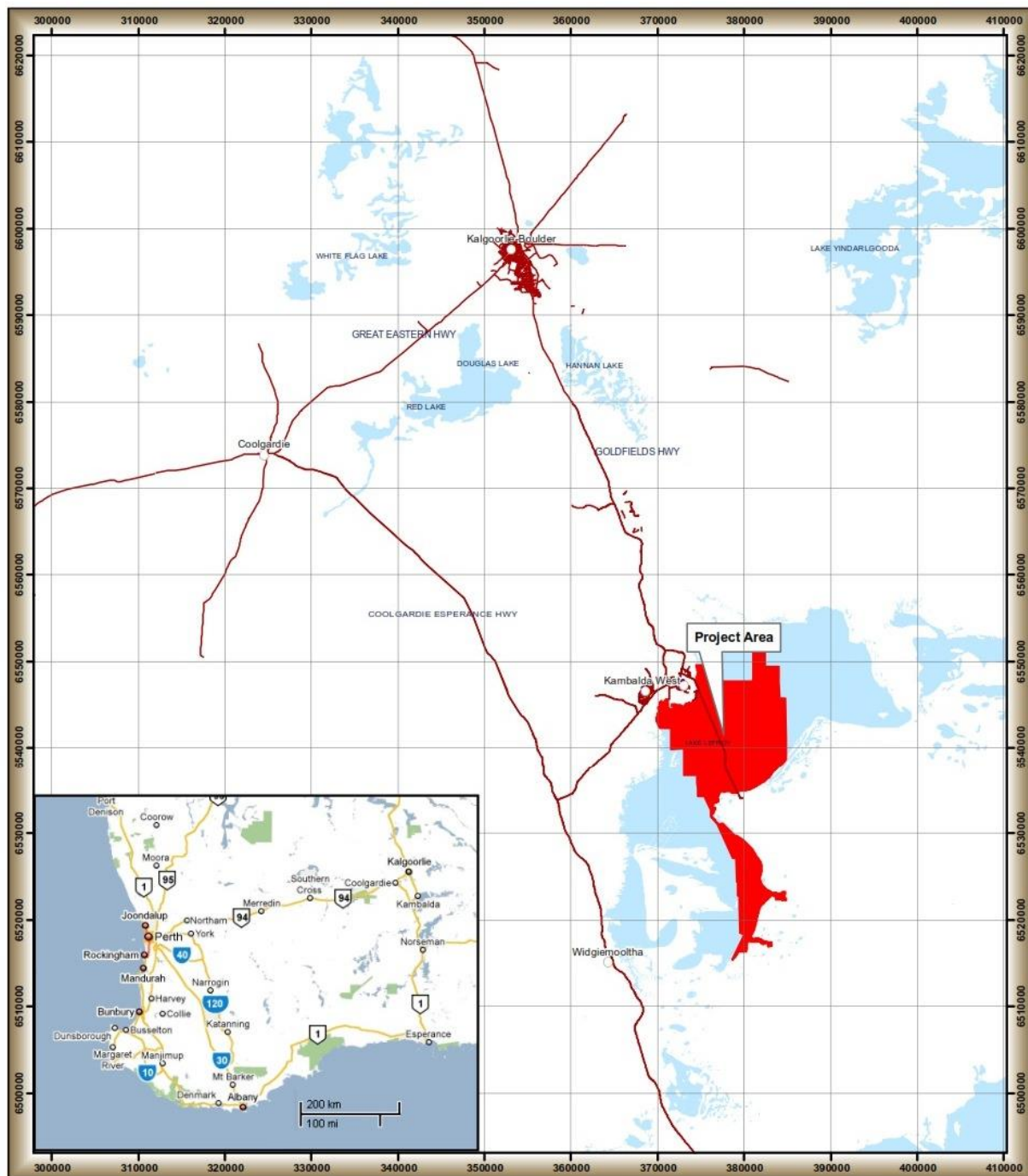
Figure 1 – Regional Location of Minesite (replaces figure 1 in Schedule 1)

Figure 2 – Project footprint and location of key components – mine disturbance
(replaces figure 2 in Schedule 1)

Figure 3 – Project footprint and location of key components – dewatering points
(replaces figure 3 in Schedule 1)

[Signed 26 March 2014]

Dr Paul Vogel
CHAIRMAN
Environmental Protection Authority
under delegated authority



Datum: Geocentric Datum of Australia (GDA94)
 Map Grid: Map Grid of Australia (MGA)
 Projection: Universal Transverse Mercator Zone 51



Date: 20/07/09
 Compiled: Renee Berry
 Drawn: Renee Berry
 Filename: PER_Figure_1_Regional_Setting.mxd

Copyright © Feb 2006 - St Ives Gold Mining Co. Pty Ltd.
 All data contained in this map is reserved for exclusive use by St Ives Gold Mine only and no part may be reproduced for any commercial purposes whatsoever without prior written permission of the General Manager of St Ives Gold Mine.

Figure 1 - Regional location of mine sites

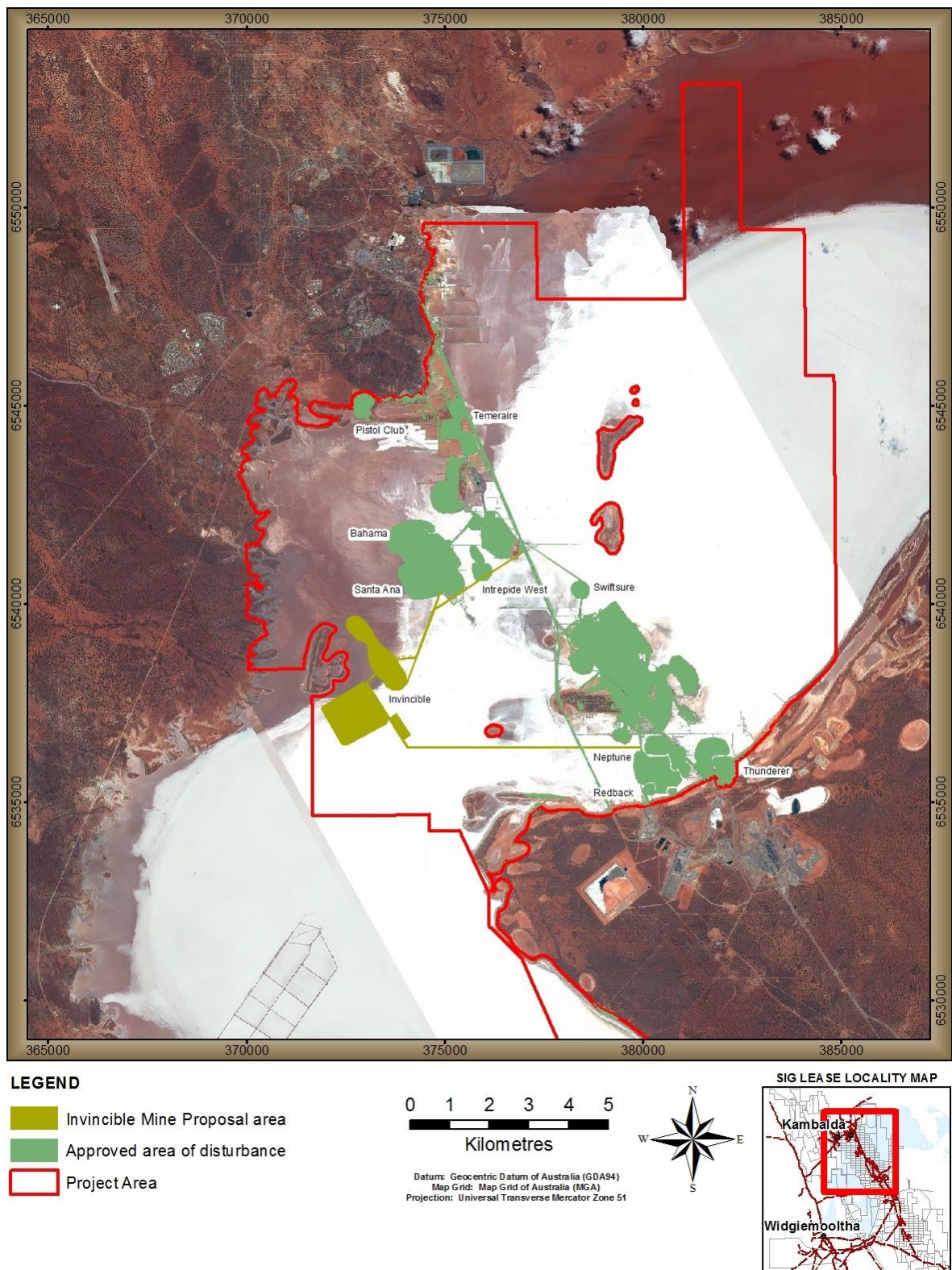


Figure 2 - Project footprint and location of key components – mine disturbance

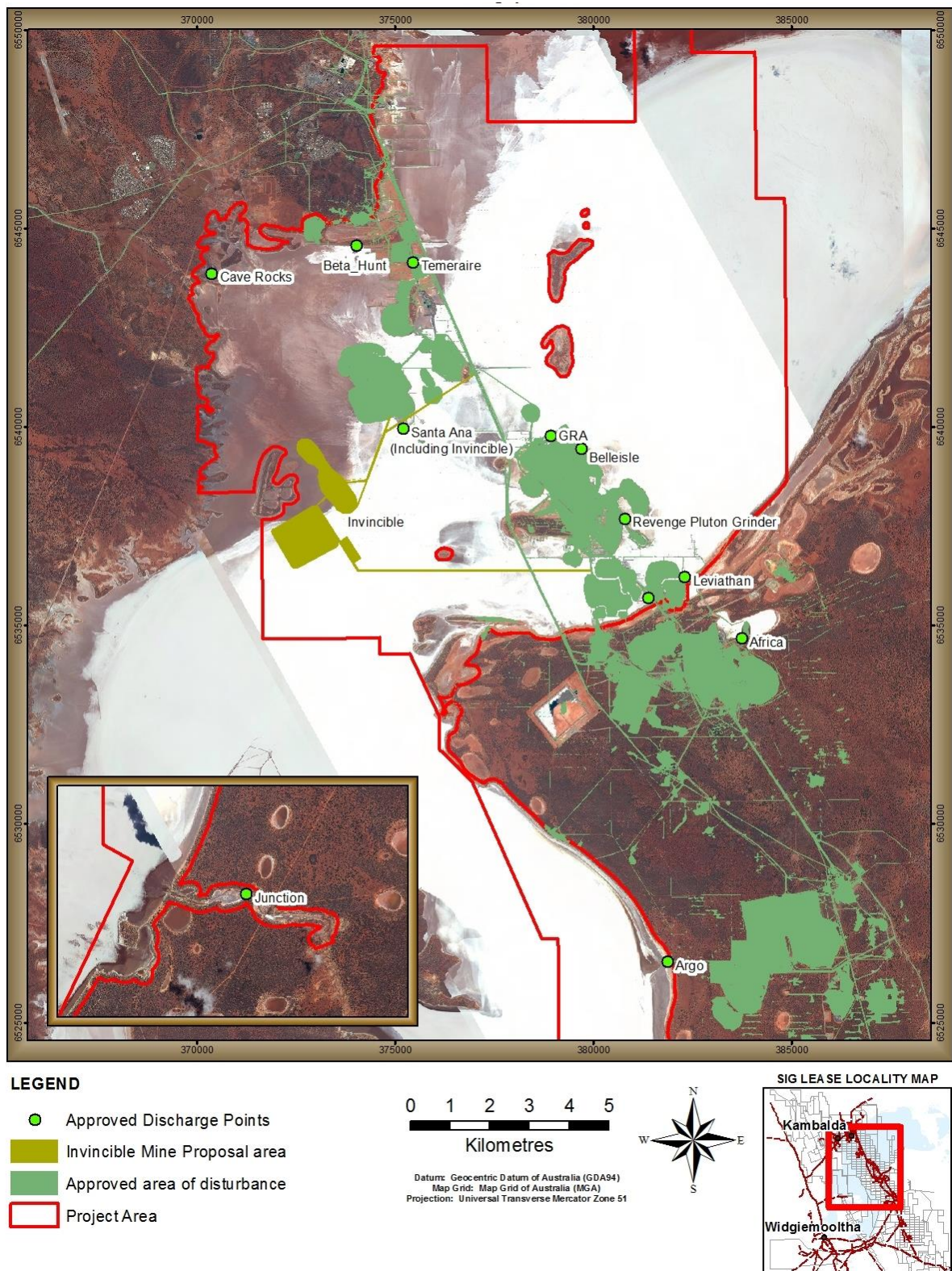


Figure 3 Project footprint and location of key components – dewatering points

Attachment 2 to Ministerial Statement 879

Change to proposal under s45C of the *Environmental Protection Act 1986*

This Attachment replaces Schedule 1 and Attachment 1 of Ministerial Statement 879

Proposal: Gold Mine Developments on Lake Lefroy

Proponent: St Ives Gold Mining Company Pty Limited

Changes:

- Increase the boundary of approved Development Envelope;
- Re-align layout of the approved area of disturbance;
- Additional dewatering discharge points; and
- Remove elements of the key characteristics table that are not relevant to the environment or regulated under other legislation.

Table 1: Summary of the Proposal

Proposal Title	Gold Mine Developments on Lake Lefroy
Short Description	The proposal is to expand existing open-cut and underground gold mining developments within a defined project area on the surface of Lake Lefroy, approximately 20 kilometres south east of Kambalda. The proposal includes the discharge of dewatering to the lake's surface and the construction of associated mining infrastructure (including open pits and waste rock dumps).

Table 2: Location and authorised extent of physical and operational elements

Element	Previously Authorised Extent	Authorised Extent
Area of disturbance	Up to 2061 hectares (ha) (including 1273 ha of existing disturbance).	Up to 2061 ha (including 1426.345 ha of existing disturbance) within the Development Envelope (Figure 2).
Area of direct riparian zone disturbance	Up to 90 ha (including 77 ha of existing disturbance).	Up to 90 ha.
Height of waste rock dumps	Up to 40 metres.	Up to 40 metres.
Volume of waste rock used for backfilling	A minimum of approximately 95 million tonnes.	A minimum of approximately 95 million tonnes.
Mining method	Open pit using conventional techniques, with some underground mining likely to be conducted at some deposits.	Removed as not a key characteristic relevant to the environment.
Dewatering volume and discharge to Lake Lefroy	Up to 30 Gigalitres per annum whole of lake discharge.	Removed as regulated under Part V of the <i>Environmental Protection Act 1986</i>.

Note: Text in **bold** in Table 2 indicates the changes to the proposal.

Figures – All previous Figures are replaced by the following:

Figure 1 Gold Mine Developments on Lake Lefroy – Regional location of mine site

Figure 2 Gold Mine Developments on Lake Lefroy – Approved area of disturbance and location of key components

Figure 3 Gold Mine Developments on Lake Lefroy – Approved area of disturbance and location of key components – dewatering discharge points

Coordinates defining the approved area of disturbance, the approved dewatering discharge points and the Development Envelope are held by the Office of the Environmental Protection Authority (Reference Number 2016 – 1482462868029).

[Signed 30 December 2016]

Robert Harvey
DEPUTY CHAIRMAN
Environmental Protection Authority
under delegated authority

Approval date: _____

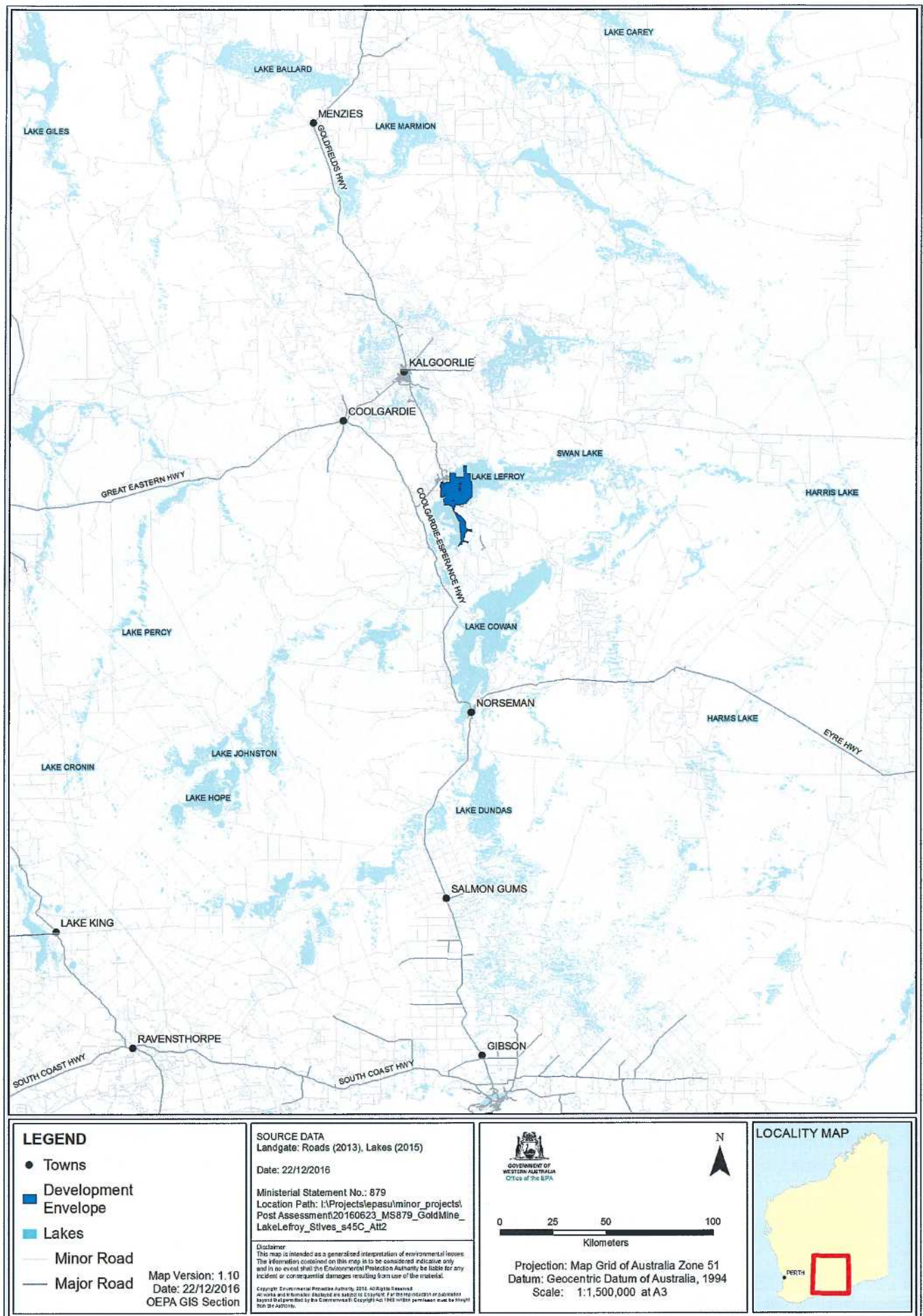


Figure 1: Regional location of mine site

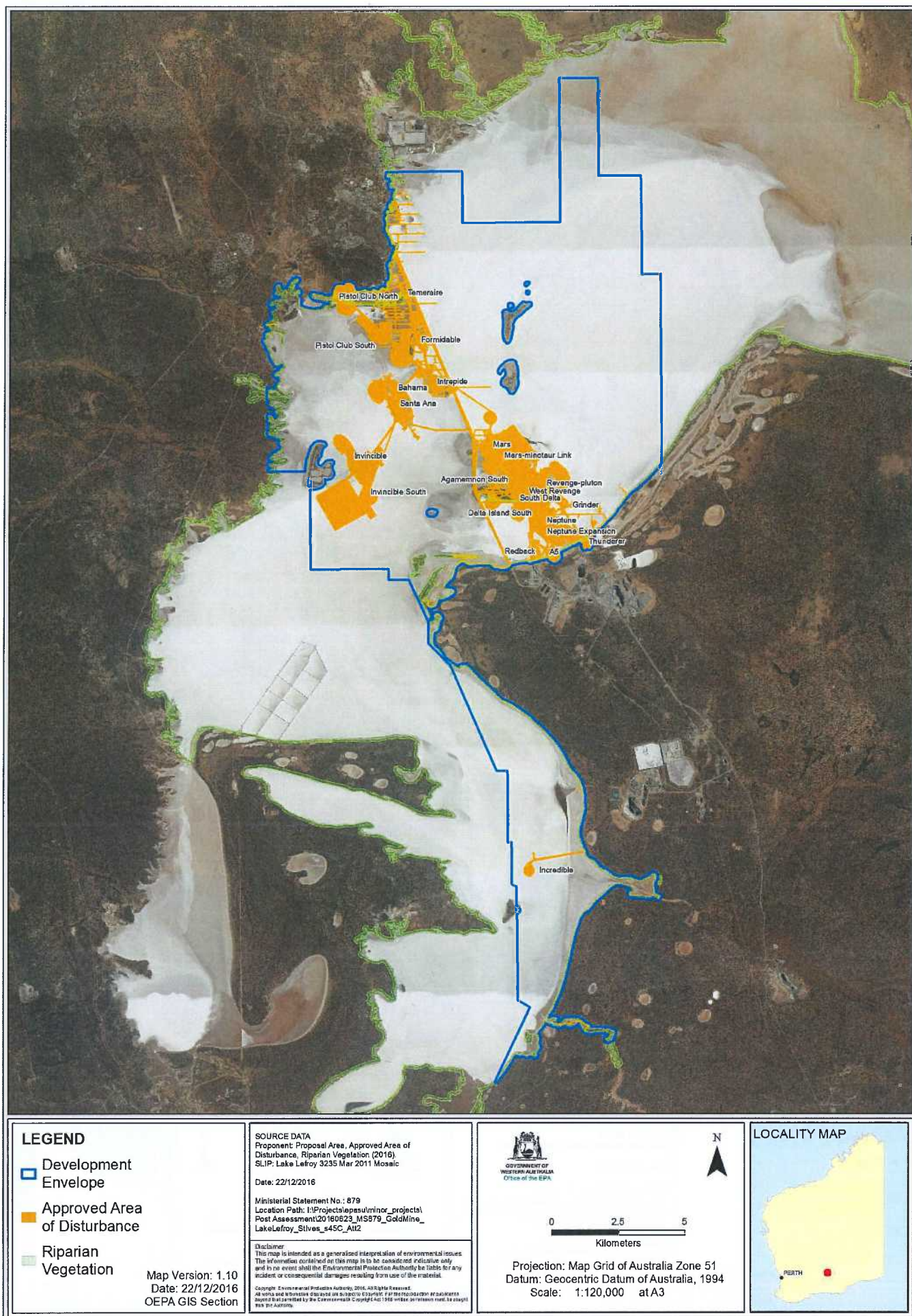


Figure 2: Approved area of disturbance and location of key components

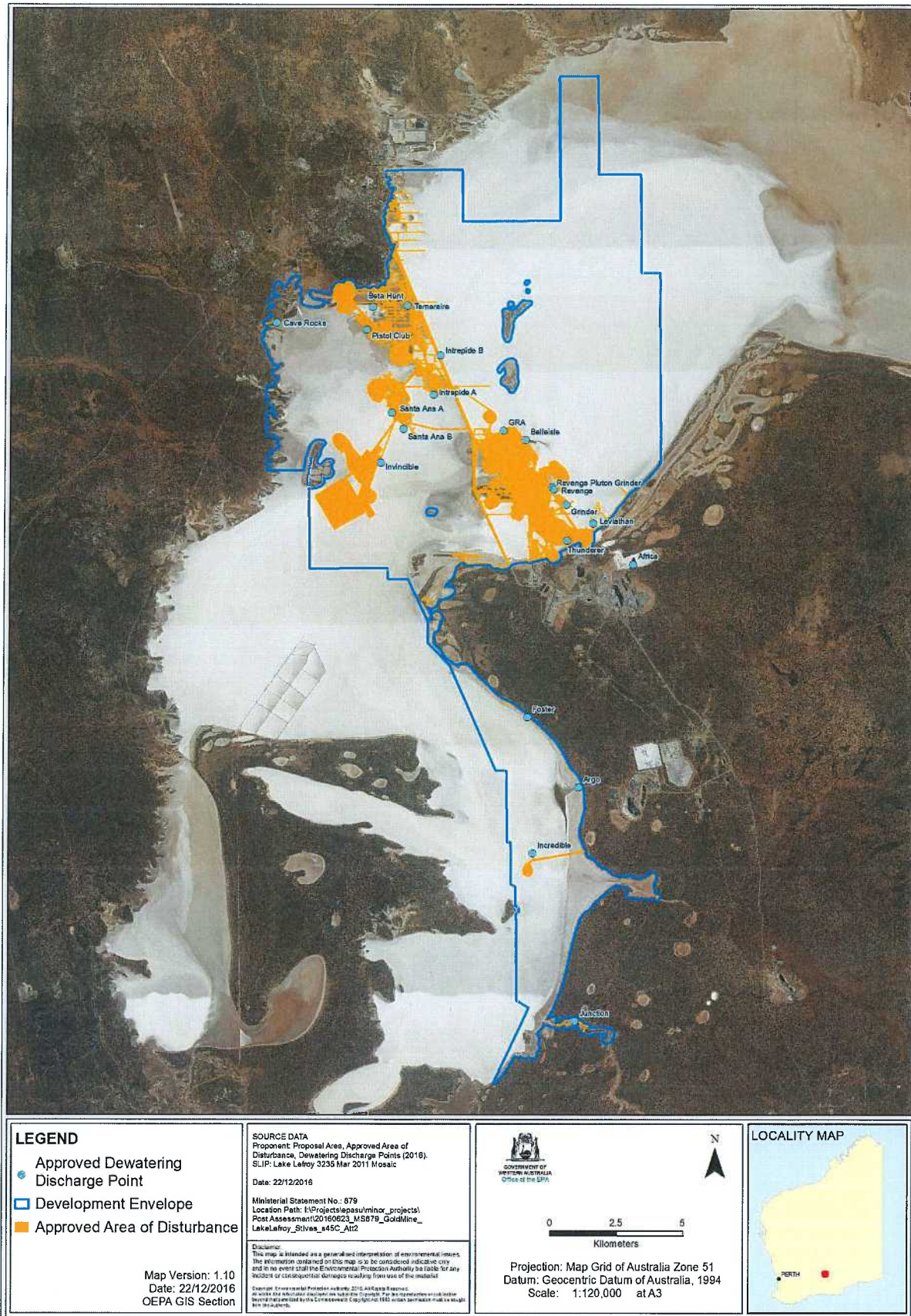


Figure 3: Approved area of disturbance and location of key components – dewatering discharge points